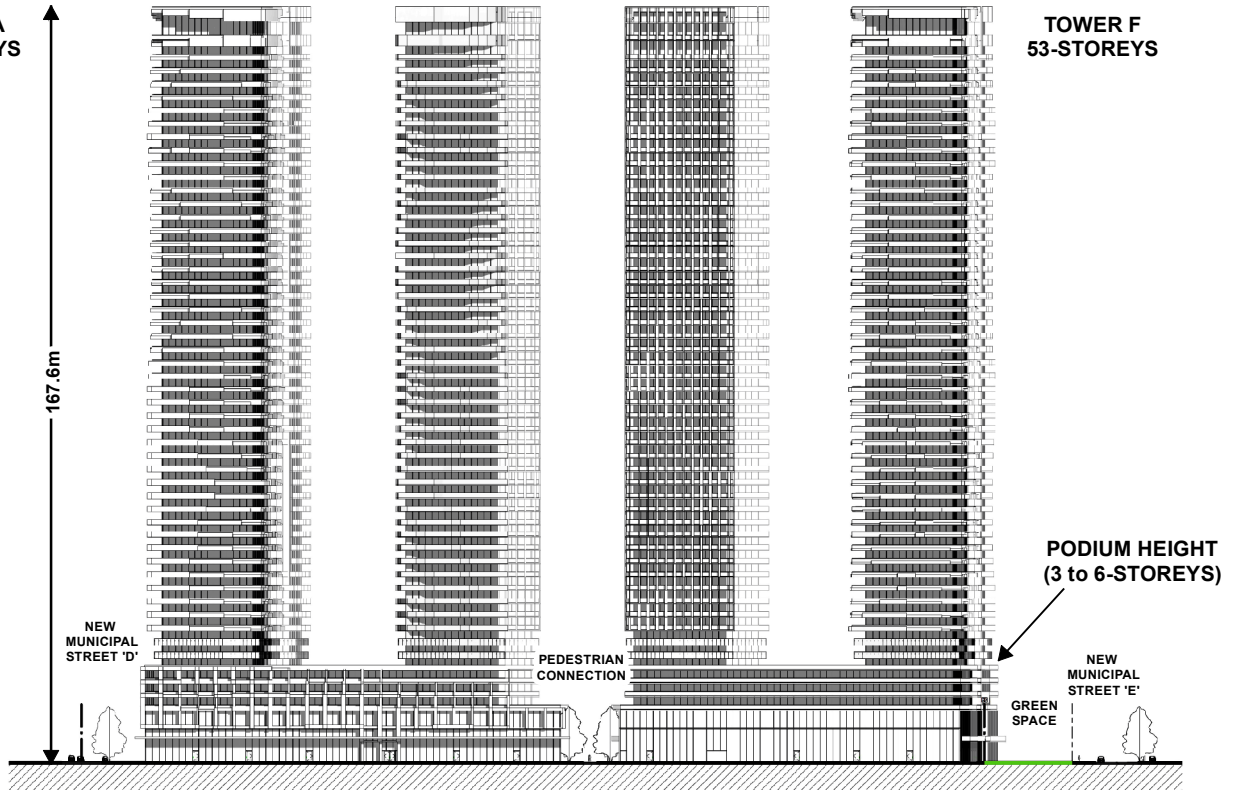


**TOWER A
53-STOOREYS**

167.6m

TOWER C 53-STOOREYS TOWER E 53-STOOREYS

**TOWER F
53-STOOREYS**



SOUTH ELEVATIONS - FACING STEELES AVENUE WEST

**TOWER B
53-STOOREYS**

**TOWER A
53-STOOREYS**

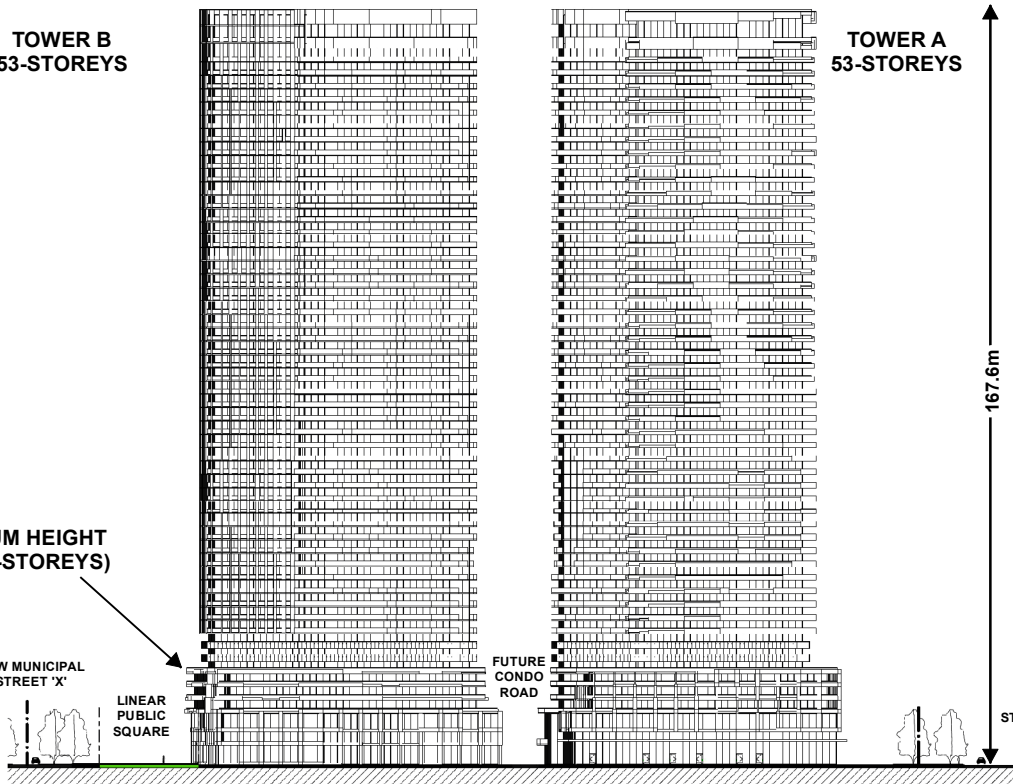
**PODIUM HEIGHT
(3 to 6-STOOREYS)**

**NEW MUNICIPAL
STREET 'X'**

**LINEAR
PUBLIC
SQUARE**

**FUTURE
CONDO
ROAD**

**STEELES AVENUE
WEST**



WEST ELEVATIONS - FACING NEW MUNICIPAL STREET 'D'

Building Elevations - South and West

LOCATION: Part of Lot 1, Concession 4;
2600 and 2700 Steeles Avenue West

APPLICANT: Zancor Homes (Steeles) LP



Attachment

FILES:
OP.21.028 and
Z.21.057

DATE:
April 5, 2022

4