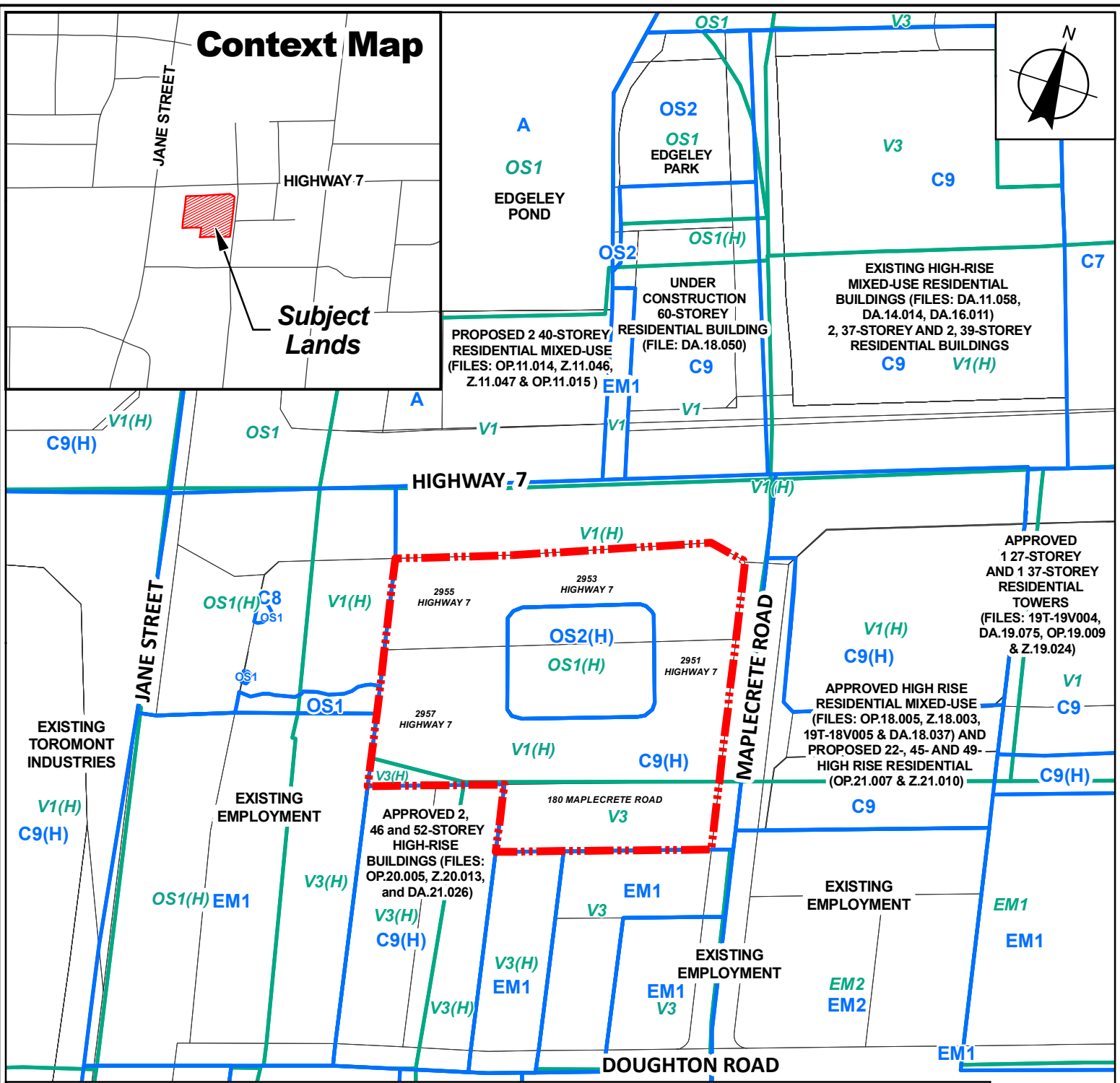


# Context Map



 <b>Subject Lands</b> By-Law 1-88  A, Agricultural C8, Office Commercial C9(H), Corporate Centre Zone with the Holding Symbol C9, Corporate Centre Zone	EM1, Prestige Employment Area  EM2, General Employment Area  OS1, Open Space Conservation OS2(H), Open Space Park with the Holding Symbol OS2, Open Space Park	<b>By-Law 1-21</b>  EM1, Prestige Employment Zone  EM2, General Employment Zone  OS1(H), Open Space Zones with the Holding Symbol V1(H), Vaughan Metropolitan Centre Station Zone with the Holding Symbol V3(H), Vaughan Metropolitan Centre Neighbourhood with the Holding Symbol	EM2  EM2	

## Context and Location Map

**LOCATION:**  
 2951-2957 Highway 7 and 180 Maplecrete Road;  
 Parts 1, 2 and 3, Plan 65R-37156  
 Part of Lot 5, Concession 4

**APPLICANT:**  
 1834371 Ontario Inc.



## Attachment

**FILES:**  
 OP.22.009, Z.22.018  
 and 19T-13V006

**DATE:**  
 January 23, 2024

**1**