

seneca heights...

On the site of a fifteenth century Seneca Indian village overlooking the Humber River, this modern community has a planned recreation area complete with park and tennis courts.

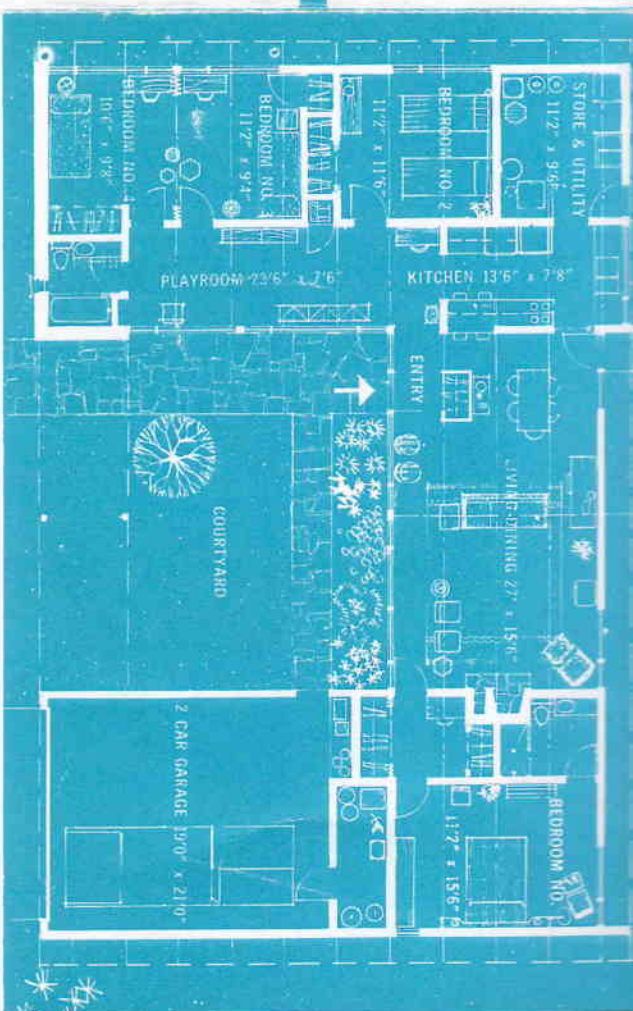
Seneca Heights offers large lots nestled on high tableland among majestic first growth oaks and maples. Services including paved roads, water, and street lighting are paid for, and deeded restrictions protect its natural beauty.

Our expert staff presents a wide variety of beautiful Ranch Homes for sale, and is also prepared to assist the most particular purchaser in the choosing of his plans and lot for that custom-built dream home. Seneca Heights has been planned and developed by Woodview Development Limited, and these homes have been designed specifically for this community.

A. E. LePage limited, realtors

2842 Bloor Street West • Phone: BELmont 3-2111

Woodbridge • ATlas 8-1042

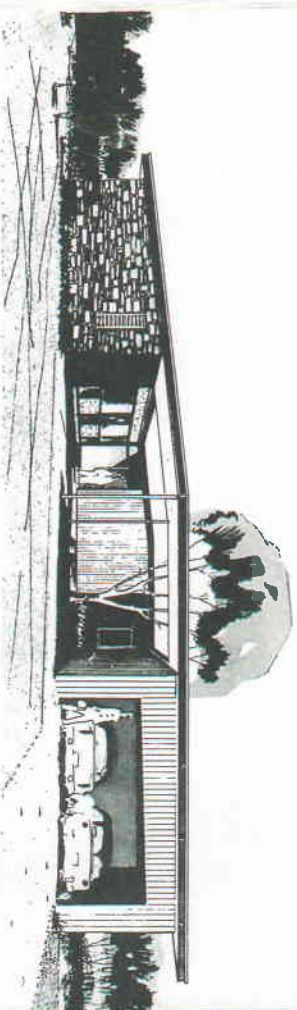


JEROME MARKSON, ARCHITECT

MODEL M-1

Stone, natural cedar siding, colored panels and glass blend in design in this unusually attractive modern home. Interior ceilings with exposed fir beams follow the gently sloping roofs and the overall design takes maximum advantage of the central outdoor court area.

Four large bedrooms, one with attendant bath provide zoned living quarters to be effectively used by the individual family to meet their desires. The bright kitchen-utility room overlooks the playroom for ready supervision. Adequate storage space is provided next to the kitchen and playroom. Extensive use of glass and roof overhangs in the living-dining room furnishes excellent controlled natural lighting. The impressive stone fireplace acts as an attractive central focus. Enclosed two-car garage complete with storage space.

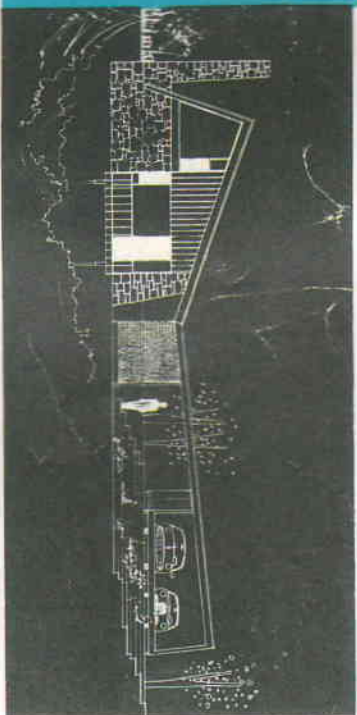


A. E. Lo Page limited,

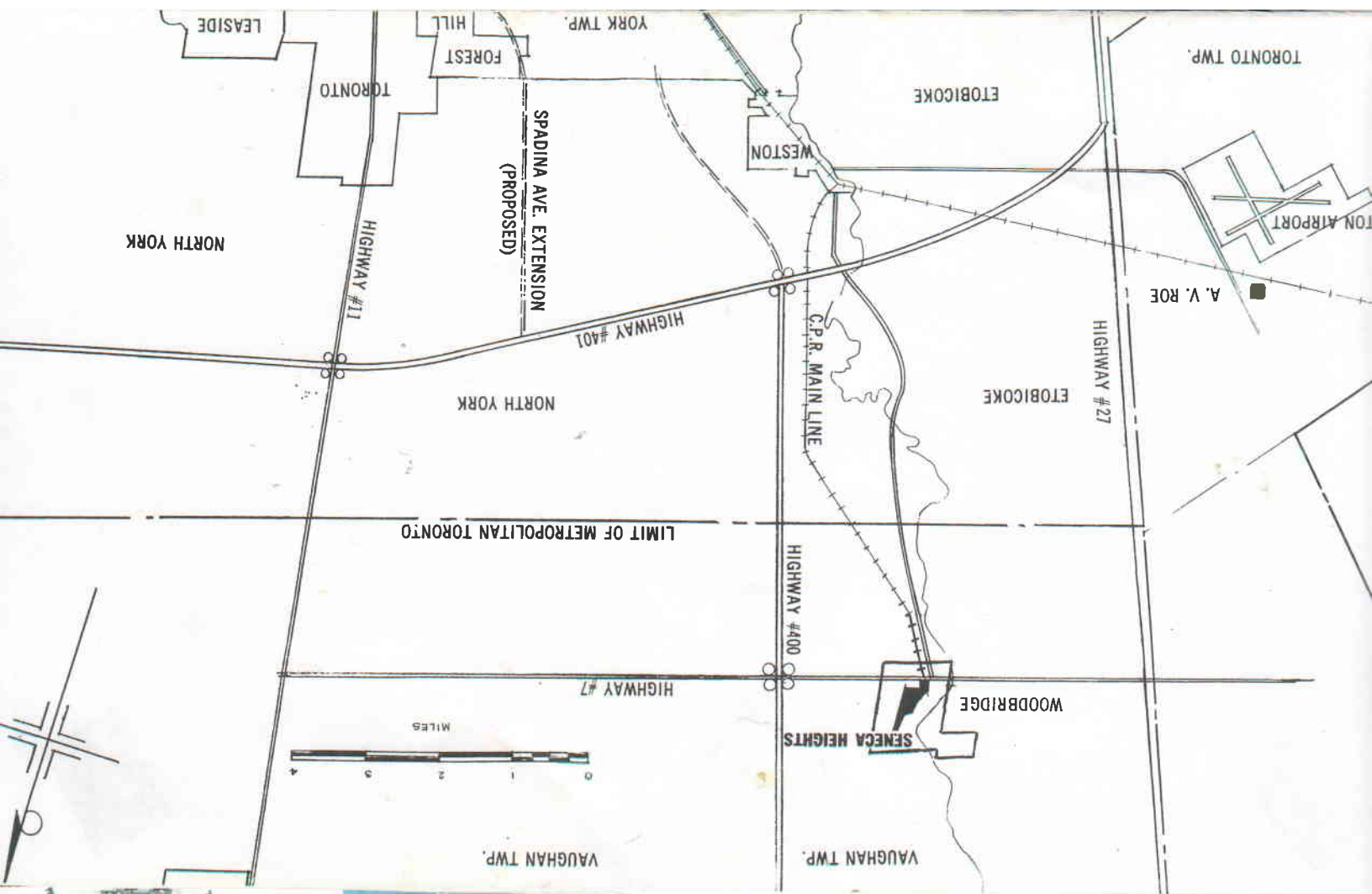
presents:

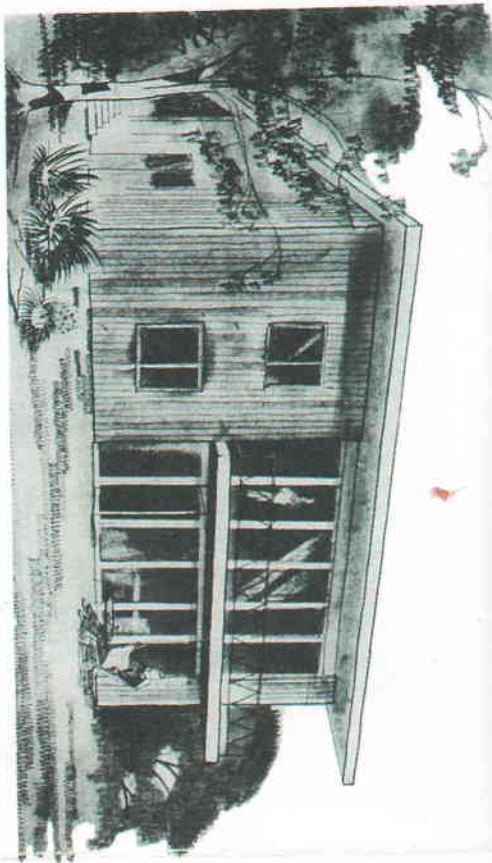
seneca heights...

fine
contemporary
homes
of exceptional
distinction



on large
and beautiful
wooded lots

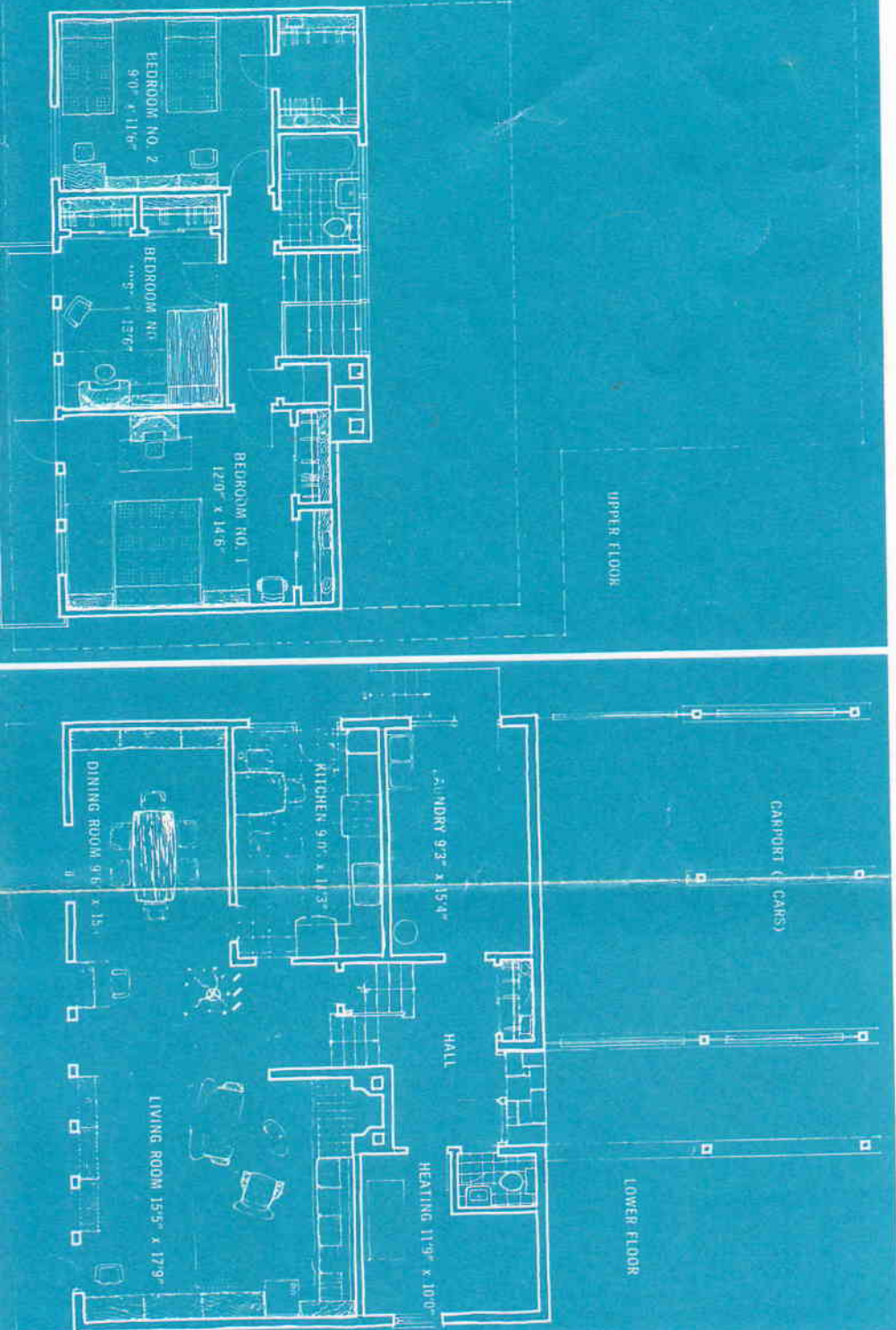




MICHAEL BACH, ARCHITECT

MODEL B-1 A truly modern split level design with unusual features of great attraction.

The spacious roofed walkway leads across the rear of the two-car carport past the wide area patio into the impressive central hall. Also on this level are utility and laundry rooms. From here, five steps down take you to the central living area . . . large kitchen and huge living-dining room with massive fireplace. Five steps up from the entrance hall is the sleeping area, bath and a storage room. From two of the bedrooms are entrances onto the flying open balcony that overlooks a view of grandeur and beauty.



MODEL B-2

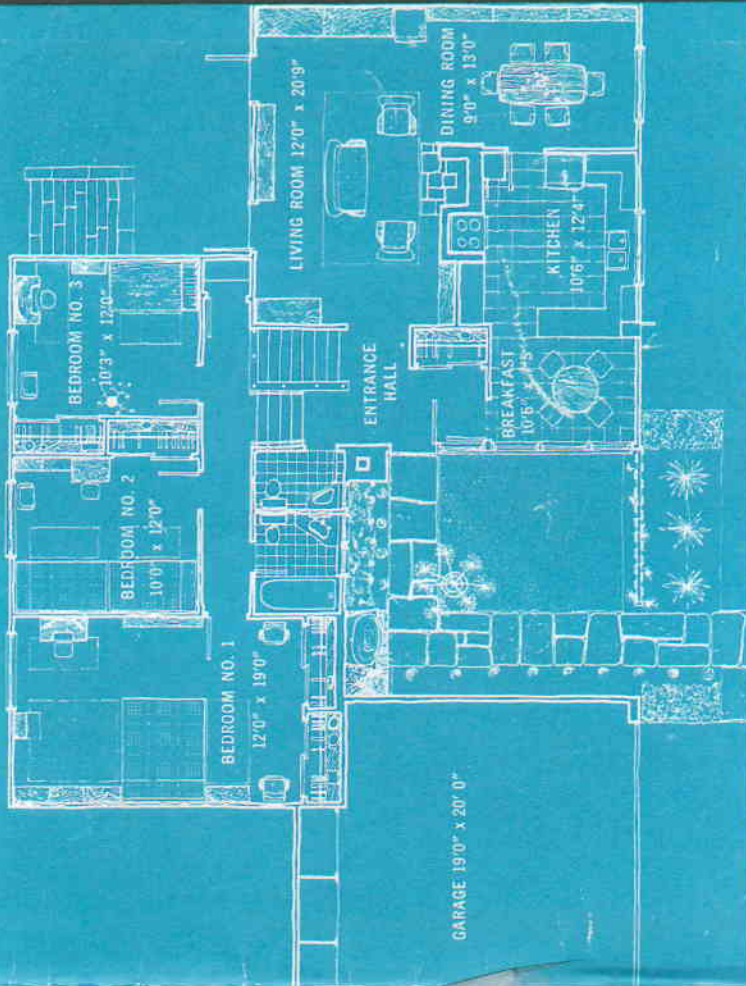
Here again is modern functional design coupled with exceptional beauty of line.

The large enclosed two-car garage with its 18' steel door flanks the entrance walkway. Inside, the modern kitchen faces the front of the home, and features built-in electric range and large breakfast nook.

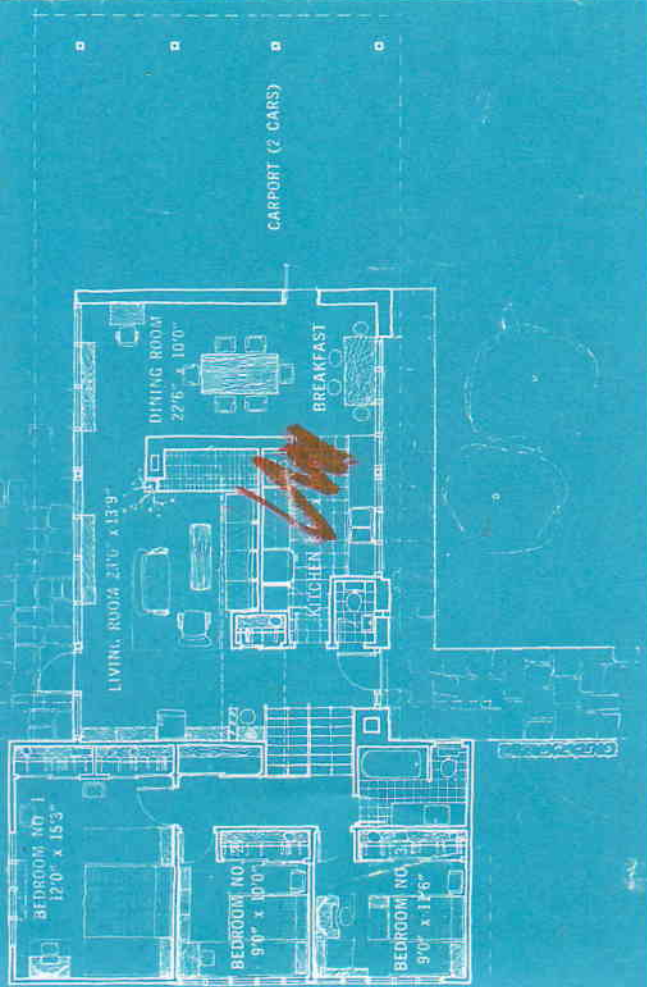
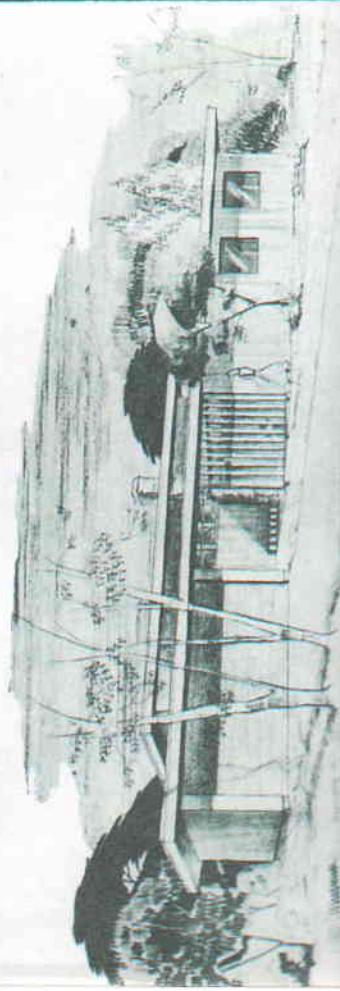
The extensive L-shaped living-dining area is beautifully centered by the stone fireplace.

Three large bedrooms, all located at the back of the house, are well separated from the living quarters.

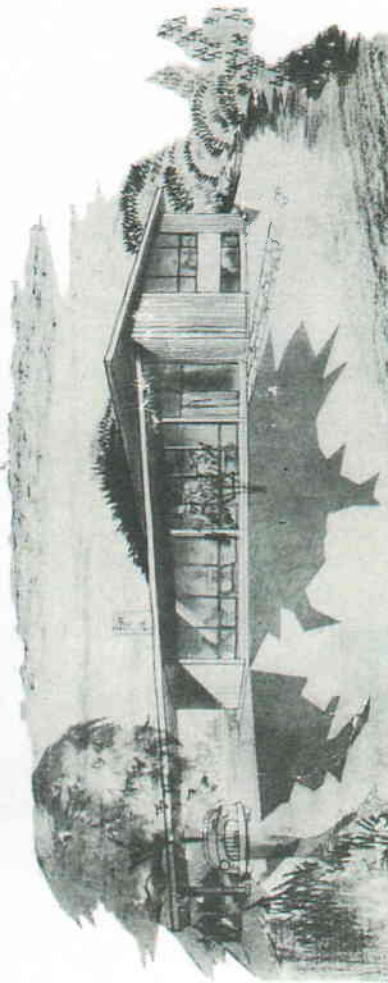
Downstairs, a completely finished recreation room along with laundry and storage rooms, make effective use of all available space.



MICHAEL BACH, ARCHITECT



MICHAEL BACH, ARCHITECT



MODEL B-3

Many unusual and attractive features make this home especially appealing to the person who desires modern design with a functional approach.

In the large living room, the huge stone fireplace becomes

the centre of attraction, enhanced by the graceful built-in wall seat and by fluorescent lighting in the cove.

The dining area provides ample space and easy access to both living room and kitchen. Off the kitchen is a handy two-piece bath.

Three large bedrooms and complete bath are located in a separate wing across one end of this home.

Laundry and furnace rooms, as well as a large panelled gamesroom, are located in the well-lighted lower level.

From the outside, the gently sloping roofs and large floor-to-ceiling glass areas present a pleasing and open appearance.