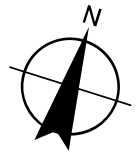
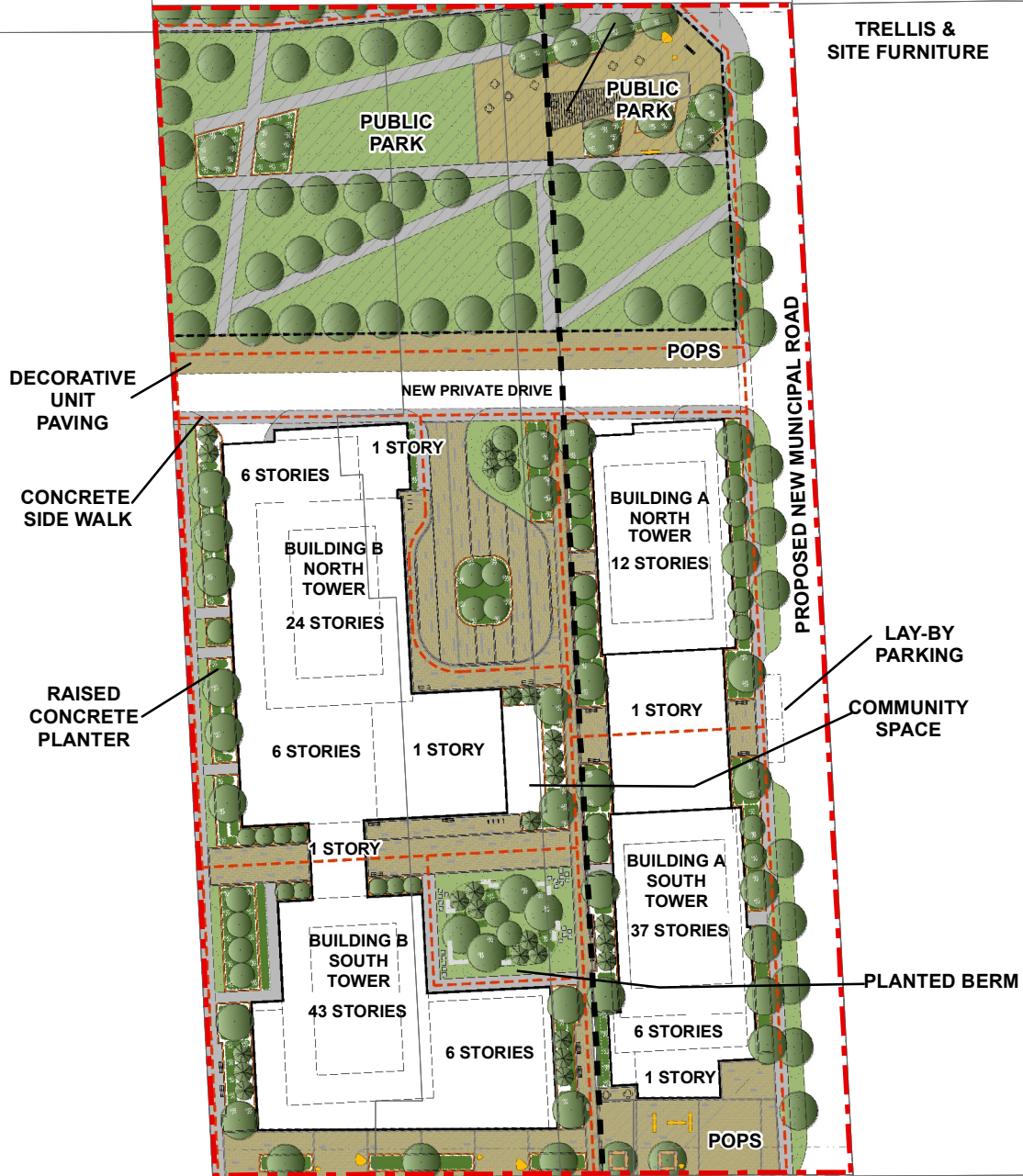


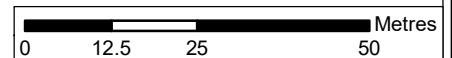
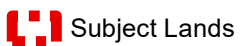
HILDA AVENUE



TRELLIS &
SITE FURNITURE



STEELES AVENUE WEST



Landscape Plan - Phase 1 and 2

LOCATION:
212, 220 and 222 Steeles Avenue West
Part of Lot 26, Concession 1

APPLICANT:
1163919 ONTARIO LTD., 1888836 ONTARIO
LTD., & 1211612 ONTARIO LTD. (AWIN)



Attachment

FILE:
OP.22.012 and Z.22.023

DATE:
May 30, 2023

4