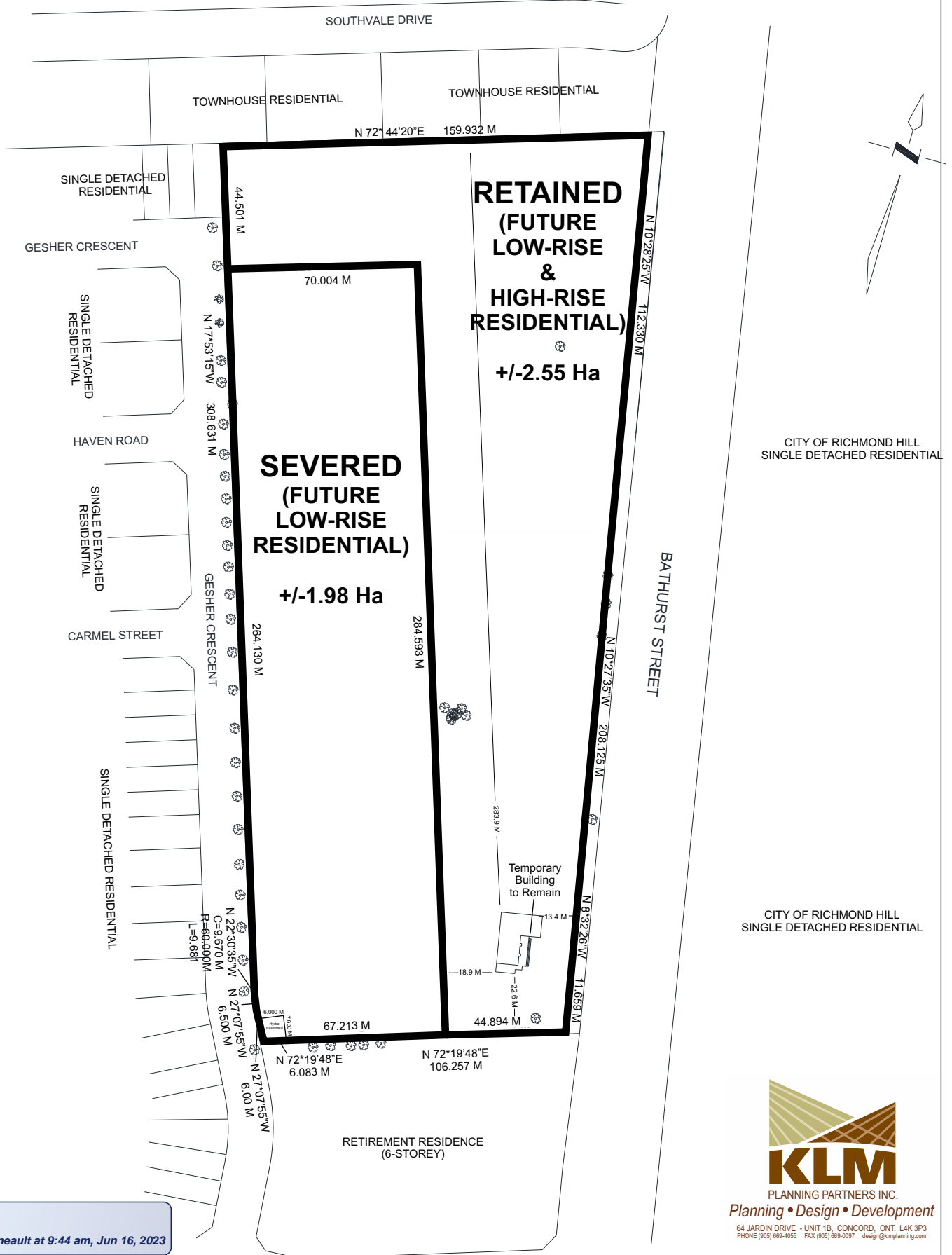


CONSENT SKETCH - 9810 BATHURST STREET



RECEIVED
By Christine Vigneault at 9:44 am, Jun 16, 2023

updated dimensions and land area for the retained parcel (from 2.67ha to 2.55ha) to recognize road widening along Bathurst Street.

KLM
PLANNING PARTNERS INC.
Planning • Design • Development
64 JARDIN DRIVE - UNIT 1B, CONCORD, ONT. L4K 3P3
PHONE (905) 869-4055 FAX (905) 869-0097 design@klmplanning.com

June 16, 2023