

KEELE STREET
(REGIONAL ROAD No. 6 BY BY-LAW No. R-470-80-128, INST. R261408)
(ROAD ALLOWANCE BETWEEN CONCESSIONS 3 AND 4)

BLOCK 8

BLOCK 7

BLOCK 2

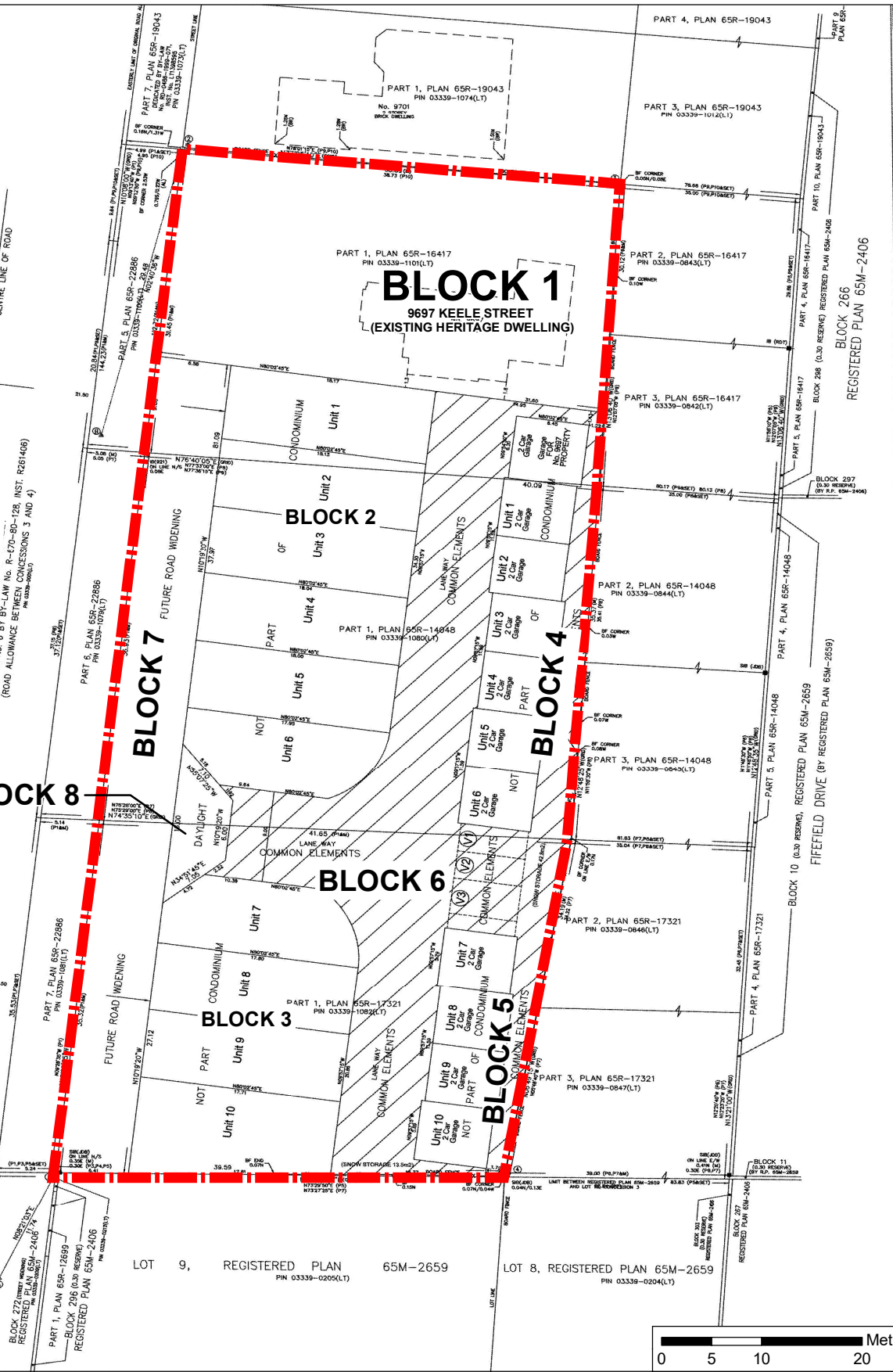
BLOCK 6


BLOCK 3

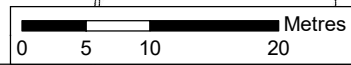
BLOCK 4

BLOCK 5

BLOCK 1
9697 KEELE STREET
(EXISTING HERITAGE DWELLING)



 Subject Lands



Draft Plan of Condominium (File 19CDM-20V007)

Attachment

LOCATION:
Part of Lot 18, Concession 3
9675, 9687 and 9697 Keele Street



RELATED FILES:
Z.20.025, DA.20.044,
19T-20V003, 19CDM-20V007

APPLICANT:
2777100 Ontario Inc.

DATE:
May 02, 2023

11