

Context Location Map

LOCATION:
Part Lot 24, Concession 9

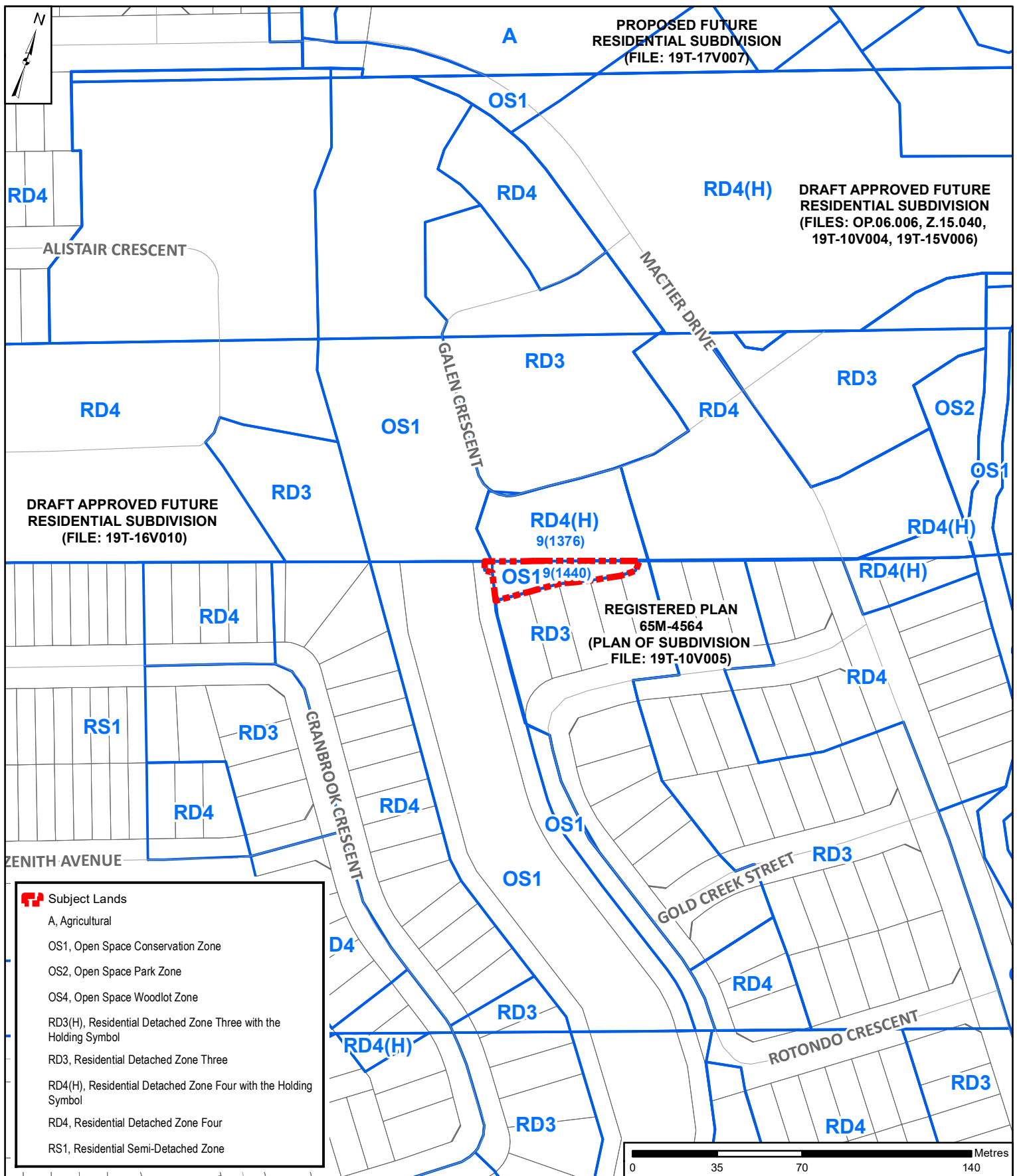
APPLICANT:
Nashville Developments (North) Inc.



Attachment

FILE:
Z.18.037
RELATED FILE:
19T-10V005
DATE:
March 5, 2019

1



Location Map

LOCATION:
Part Lot 24, Concession 9

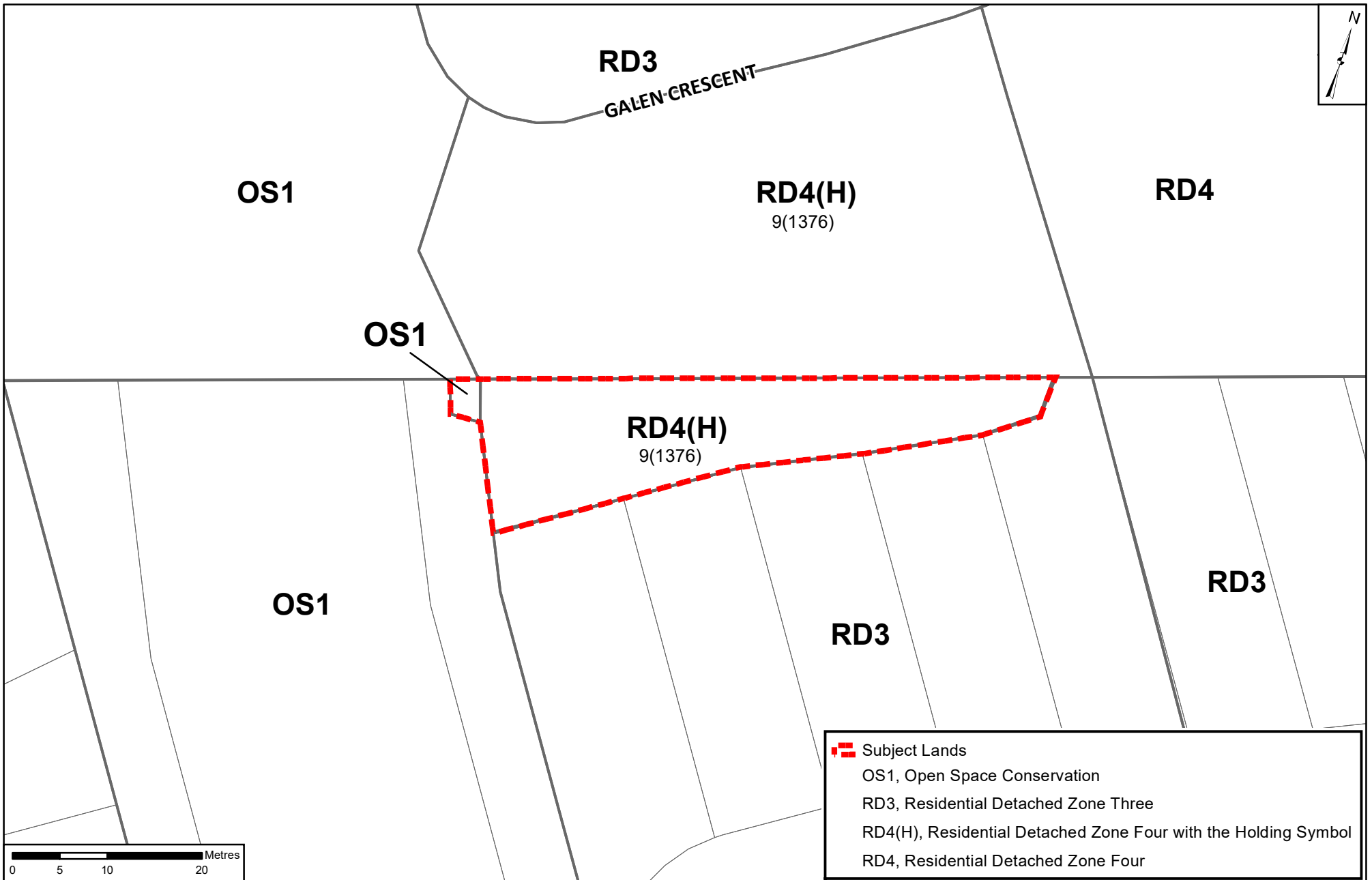
APPLICANT:
Nashville Developments (North) Inc.



Attachment

FILE:
Z.18.037
RELATED FILE:
19T-10V005
DATE:
March 5, 2019

2



Proposed Zoning

LOCATION:
Part of Lot 24, Concession 9

APPLICANT:
Nashville Developments (North) Inc.

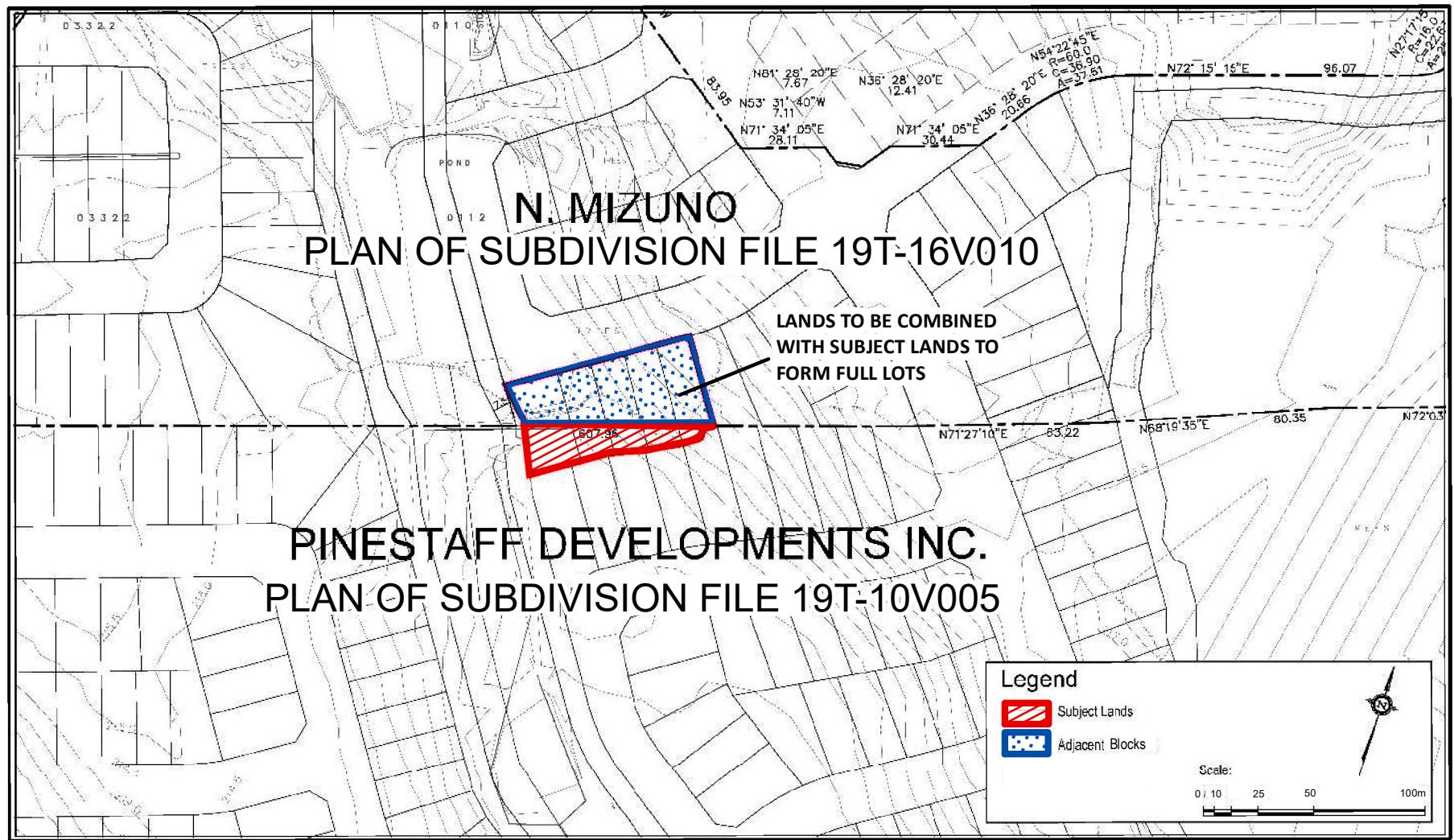
Document Path: N:\GIS_Archive\Attachments\Z\Z.18.037\Z.18.037_C_ProposedZoning.mxd



Attachment

FILE:
Z.18.037
RELATED FILE:
19T-10V005
DATE:
March 5, 2019
Printed on: 2/12/2019

3



Concept Plan

LOCATION:
Part of Lot 24, Concession 9

APPLICANT:
Nashville Developments (North) Inc.

Document Path: N:\GIS_Archive\Attachments\Z\Z.18.037\Z.18.037_C_ConceptPlan.mxd



Attachment

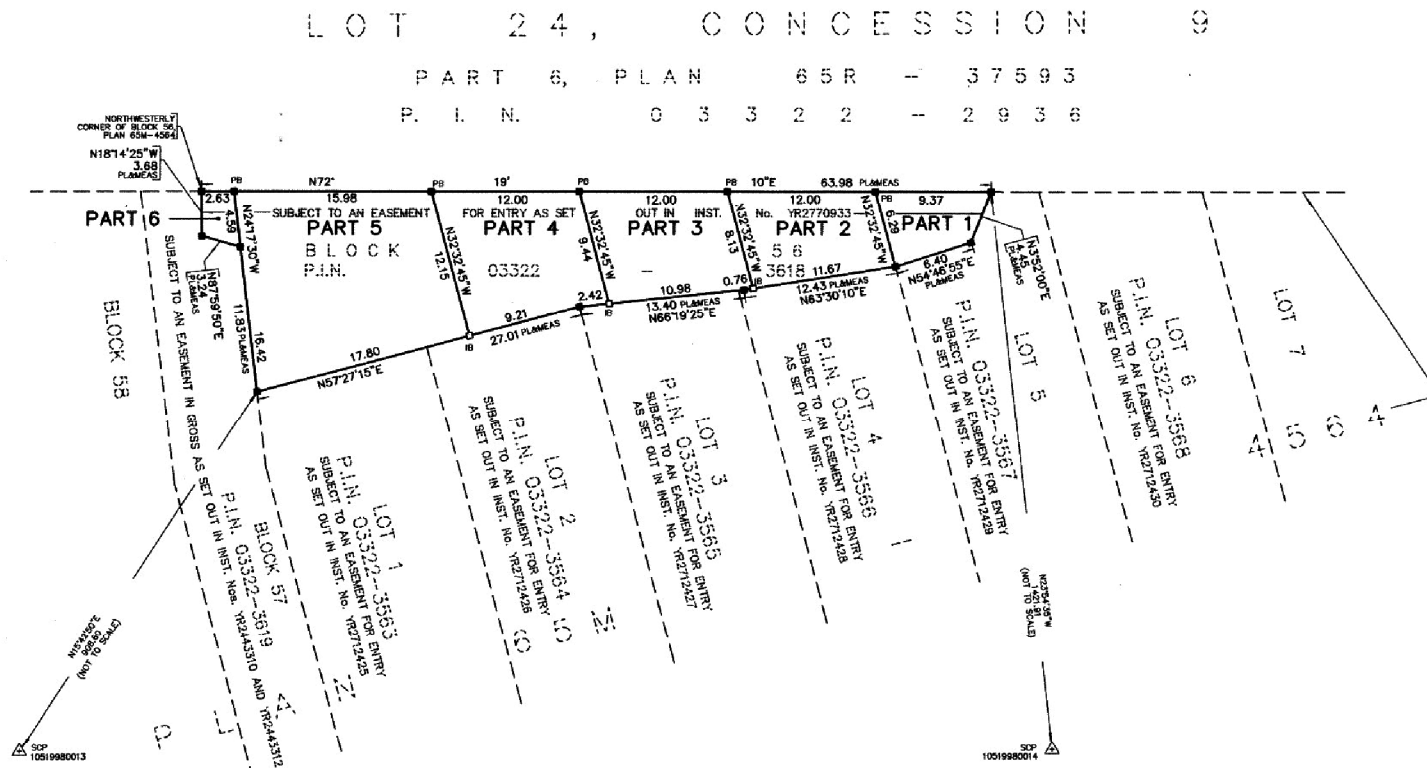
FILE:
Z.18.037
RELATED FILE:
19T-10V005
DATE:
March 5, 2019

4

Printed on: 2/12/2019

PLAN OF SURVEY OF
BLOCK 56, PLAN 65M-4564
CITY OF VAUGHAN
REGIONAL MUNICIPALITY OF YORK

SCALE 1:300
10m 5m 0 10m 20m 30m 40 metres
RADY-PENTEK & EDWARD SURVEYING LTD., O.L.S.,
METRIC
DISTANCES AND COORDINATES SHOWN ON THIS PLAN ARE IN METRES
AND CAN BE CONVERTED TO FEET BY DIVIDING BY 0.3048



Plan of Survey

LOCATION:
Part of Lot 24, Concession 9

APPLICANT:
Nashville Developments (North) Inc.



Attachment

FILE:
Z.18.037
RELATED FILE:
19T-10V005
DATE:
March 5, 2019

5