

TREE INVENTORY NOTES

Tree No.	Common Name	Botanical Name	DBH (CM)	Cond.	Size of TPZ(M)	Comments	Recommendation
1*	Siberian Elm	Ulmus pumila	68	F	6.8		Retain
2*	Silver Maple	Acer saccharinum	72	F	7.2		Retain
3	Basswood	Tilia americana	57	F	3.6		Retain
4	Colorado Spruce	Picea pungens	23	F/P	1.8	In severe decline	Remove due to construction
5	Colorado Spruce	Picea pungens	19	P	1.8	In decline	Remove due to construction
6	Colorado Spruce	Picea pungens	38	F/P	1.8	In severe decline	Remove due to construction
7	Colorado Spruce	Picea pungens	17	P	1.8	In decline	Remove due to construction
8	Colorado Spruce	Picea pungens	24	P	1.8	2 stems codominant, in decline	Remove due to construction
9	Colorado Spruce	Picea pungens	21	F/P	1.8	In severe decline	Remove due to construction
10	Silver Maple	Acer saccharinum	~24	F	3.6	Moderate lean	Retain
11	Silver Maple	Acer saccharinum	~42	F	6.0		Retain
12	Silver Maple	Acer saccharinum	~49	F	6.0	Obvious cavitation in trunk	Retain
13	Silver Maple	Acer saccharinum	~55	F	7.2		Retain
14	Silver Maple	Acer saccharinum	~60	F	7.2		Retain
15	Silver Maple	Acer saccharinum	~62	F	8.4		Retain
16	Manitoba Maple	Acer negrundo	65	F	4.2	Evidence of past structural failures	Remove due to construction
17	Manitoba Maple	Acer negrundo	62	F	8.4	Obvious cavitation in upper trunk	Remove due to construction
18	Ash Sp.	Fraxinus Sp.	~43	D	-		Retain 3.0m standing peg for habitat. Dead canopy to be removed per TRCA.
19	Colorado Spruce	Picea pungens	35	F	2.4		Remove due to construction
20	Colorado Spruce	Picea pungens	45	F	3.0		Remove due to construction
21	Colorado Spruce	Picea pungens	37	F	2.4		Remove due to construction
22	Apple Sp.	Malus Sp.	17	F	1.8		Remove due to construction
23	Colorado Spruce	Picea pungens	31	F	2.4		Retain
24	Norway Spruce	Picea abies	12	F	1.8		Retain
25	Colorado Spruce	Picea pungens	35	F	2.4		Retain
26	Norway Spruce	Picea abies	10	F	1.8		Retain
27	Colorado Spruce	Picea pungens	38	F	2.4		Retain
28	Colorado Spruce	Picea pungens	19	F	1.8		Retain
29	Norway Spruce	Picea abies	10	F	1.8		Retain
30	Norway Spruce	Picea abies	17	F	1.8		Retain
31	Colorado Spruce	Picea pungens	36	F	2.4		Retain
32	Colorado Spruce	Picea pungens	46	F	3		Retain
33	Colorado Spruce	Picea pungens	22	F	1.8		Retain
34	Colorado Spruce	Picea pungens	26	F	1.8		Remove due to construction
35	Colorado Spruce	Picea pungens	29	F	1.8		Remove due to construction
36	Cedar Sp.	Thuja Sp.	27	F	1.8		Remove due to construction
37	Colorado Spruce	Picea pungens	29	F	1.8		Remove due to construction
38	Cedar Sp.	Thuja Sp.	19	F	1.8		Remove due to construction
39	Colorado Spruce	Picea pungens	28	F	1.8		Remove due to construction
40	Cedar Sp.	Thuja Sp.	25	F	1.8		Remove due to construction
41	Cedar Sp.	Thuja Sp.	32	F	2.4		Remove due to construction
42	Cedar Sp.	Thuja Sp.	34	F	2.4		Remove due to construction
43	Mulberry Sp.	Morus Sp.	15	F	1.8		Remove due to construction
44	Scots Pine	Pinus sylvestris	47	F	3.0	Multi-stem	Remove due to construction
45	Colorado Spruce	Picea pungens	15	F	1.8		Remove due to construction
46	Sugar Maple	Acer saccharum	60	F	3.0		Remove due to construction
47	Sugar Maple	Acer saccharum	64	F	4.2		Remove due to construction
48	Cedar Sp.	Thuja Sp.	23	F	1.8	2 stem	Remove due to construction
49	Cedar Sp.	Thuja Sp.	26	F	1.8	2 stem	Remove due to construction
50	Cedar Sp.	Thuja Sp.	25	F	1.8	3 stem	Remove due to construction
51	Mountain Ash	Sorbus americana	30	F	2.4	Tree in severe decline	Remove due to construction
52	White Pine	Pinus strobus	42	F	3.0		Remove due to construction
53	Ornamental Pear	Pyrus calleryana	17	F	1.8		Remove due to construction
54	Ivory Silk Lilac	Syringa reticulata 'Ivory Silk'	15	F	1.8	Tree is shaded out by adjacent trees	Remove due to construction
55	White Spruce	Picea glauca	22	F	1.8		Remove due to construction
56	Ivory Silk Lilac	Syringa reticulata 'Ivory Silk'	17	F	1.8	Multi-stem	Retain
57*	White Spruce	Picea glauca	26	F	2.6	Moderate signs of urban stress	Remove due to construction
58*	White Spruce	Picea glauca	25	F	2.5	Moderate signs of urban stress	Remove due to construction
59*	White Spruce	Picea glauca	17	F	2.4	Moderate signs of urban stress	Remove due to construction
60	Colorado Spruce	Picea pungens	21	D	1.8		Remove due to condition
61	Norway Spruce	Picea abies	~15	F	3.6		Retain
62	Crimson King Maple	Acer platanoides 'Crimson King'	~29	F	3.6		Retain
63	Ash Sp.	Fraxinus Sp.	~60	D	-		Retain
64	Manitoba Maple	Acer negrundo	~44	F	6.0	Moderate lean	Retain
65	Ash Sp.	Fraxinus Sp.	34	D	-		Retain 3.0m standing peg for habitat. Dead canopy to be removed per TRCA.
66	Ash Sp. Grouping	Fraxinus Sp.	-	D	-	Grouping of 8 dead Ash trees on neighbouring property - 25 - 45 DBH	Retain
67	Manitoba Maple	Acer negrundo	~32	F	4.8		Retain
68	Manitoba Maple	Acer negrundo	~34	F/P	4.8	Heavily leaning/fallen	Retain
69	Ash Sp.	Fraxinus Sp.	~72	D	-		Retain 3.0m standing peg for habitat. Dead canopy to be removed per TRCA.
70	Crabapple	Malus sylvestris	~29	F/P	3.6		Retain

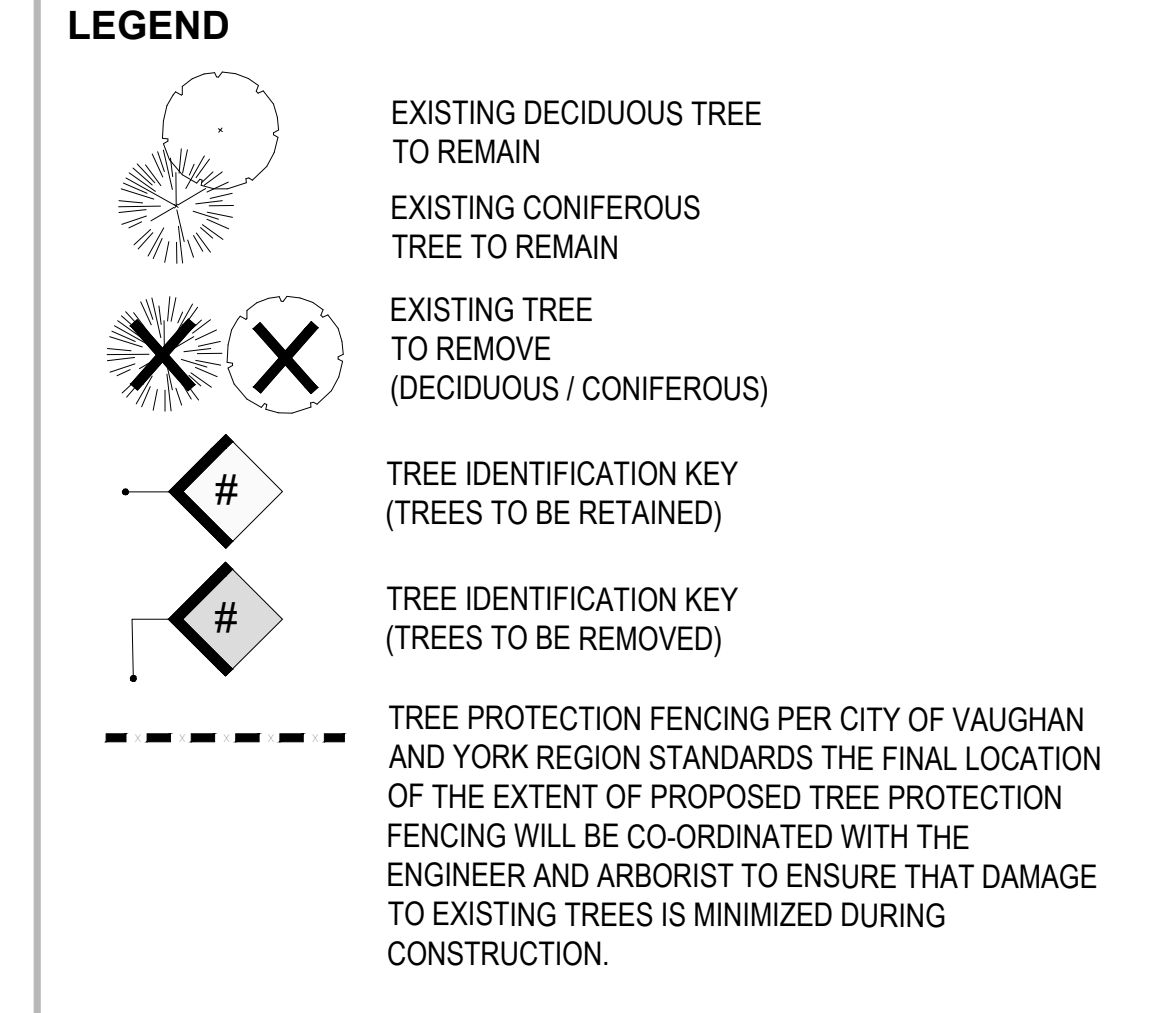
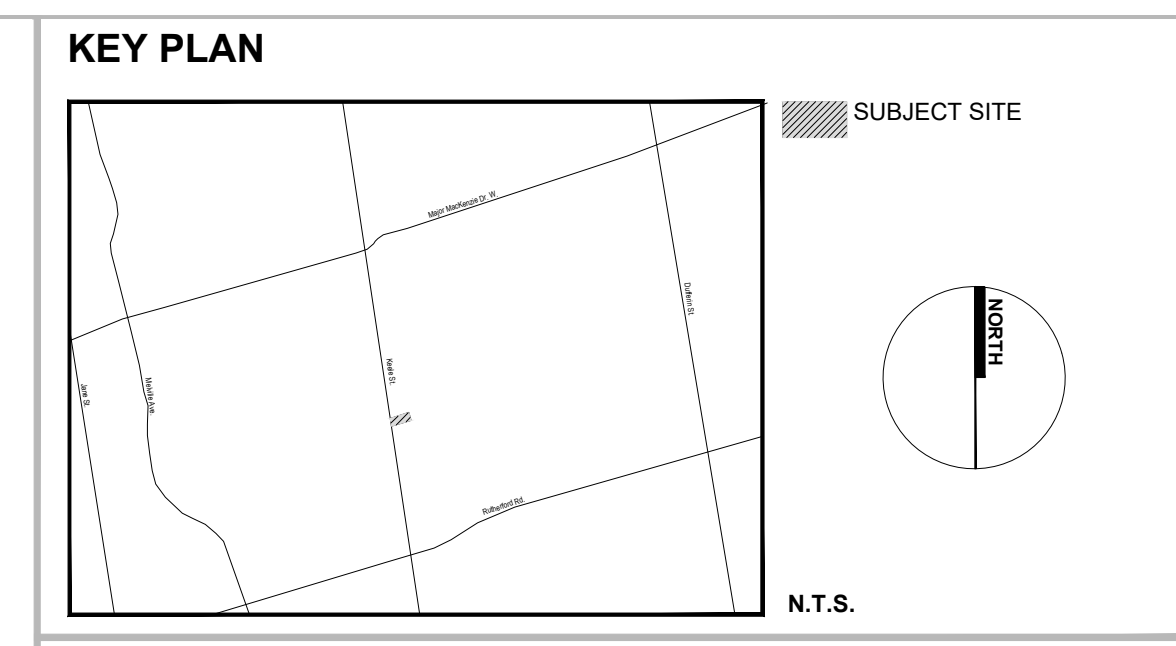
1 TREE INVENTORY
TI-1 1:250

NOTE:
A PRIVATE PROPERTY TREE REMOVAL & PROTECTION PERMIT (CONSTRUCTION/INFILL) IS REQUIRED FOR THE REMOVAL/INJURY TO TREES (OVER 20CM DBH) ON THE SUBJECT PROPERTY OR MUNICIPALLY OWNED TREES OF ANY SIZE AND TREES LOCATED WITHIN 6 METERS OF THE SUBJECT PROPERTY, AS PER BY-LAW 052-2018. IF ENTERING INTO A TPA (TREE PROTECTION AGREEMENT), FORESTRY WILL WAIVE THE PRIVATE PROPERTY TREE REMOVAL PERMIT REQUIREMENT.

NOTE:
ALL TREE REMOVALS/TREE PROTECTION LOCATED ON THE SUBJECT PROPERTY SHALL CONFORM WITH BY-LAW 052-2018.

NOTE:
ALL TREES LOCATED ON THE REGIONAL ROAD ALLOWANCE TO BE PRESERVED SHALL CONFORM TO THE FOLLOWING REQUIREMENTS:
A. ALL TREES PRESERVATION SHALL BE IN ACCORDANCE WITH THE YORK REGION STREET TREE AND FOREST PRESERVATION GUIDELINES
B. YORK REGION NATURAL HERITAGE AND FORESTRY STAFF SHALL BE NOTIFIED WHEN TREE PROTECTION MEASURES HAVE BEEN INSTALLED
C. ALL TREE PROTECTION FENCING SHALL BE INSTALLED PRIOR TO CONSTRUCTION AND MUST REMAIN IN GOOD REPAIR FOR THE DURATION OF CONSTRUCTION
D. AT THE SOLE DISCRETION OF YORK REGION NATURAL HERITAGE AND FORESTRY STAFF ANY EXISTING TREES THAT DIE OR EXHIBIT A DECLINE IN HEALTH PRIOR TO FINAL ACCEPTANCE SHALL BE REPLACED OR COMPENSATION SHALL BE PROVIDED

**ATTACHMENT 9
9575 KEELE**

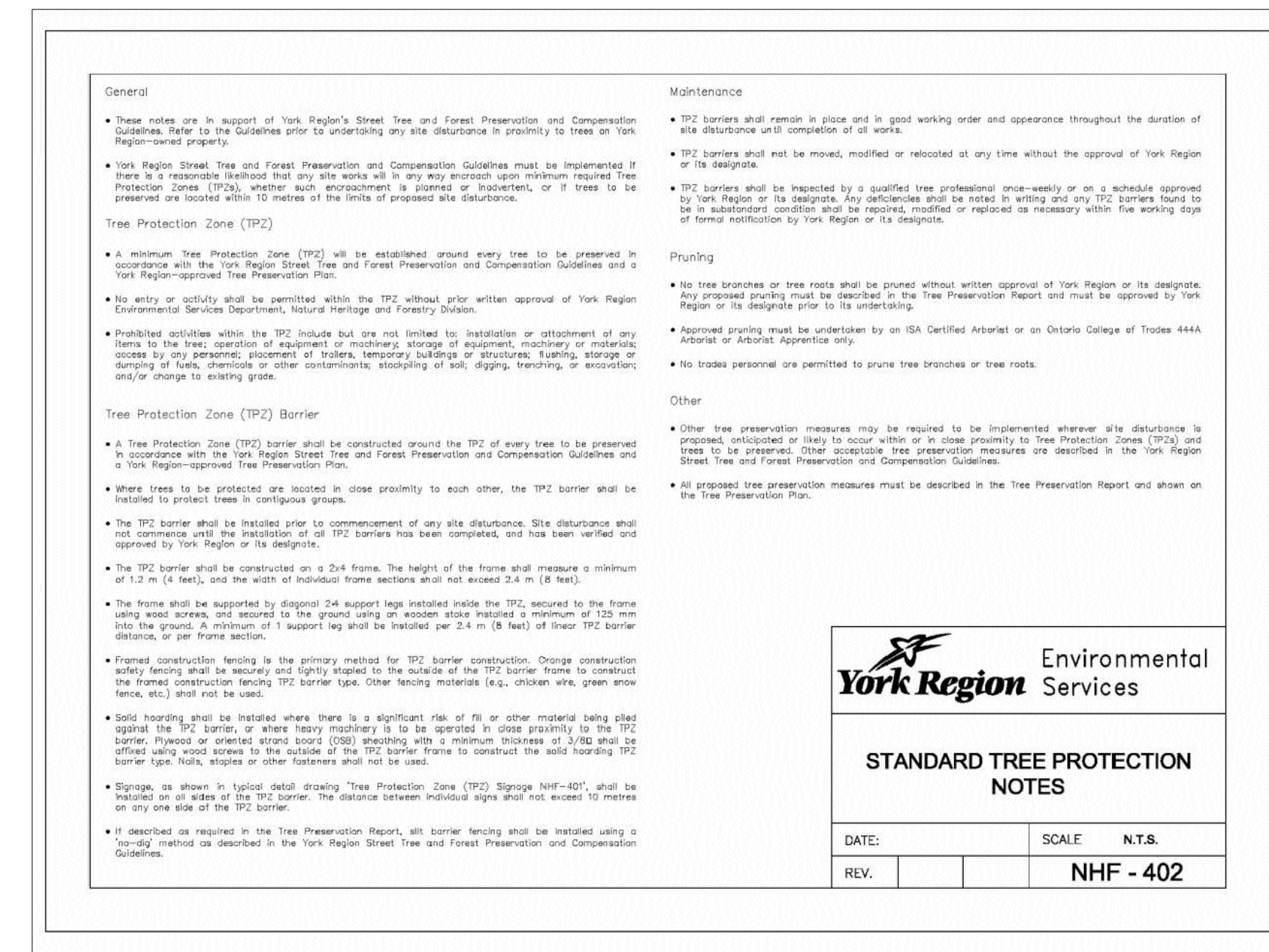
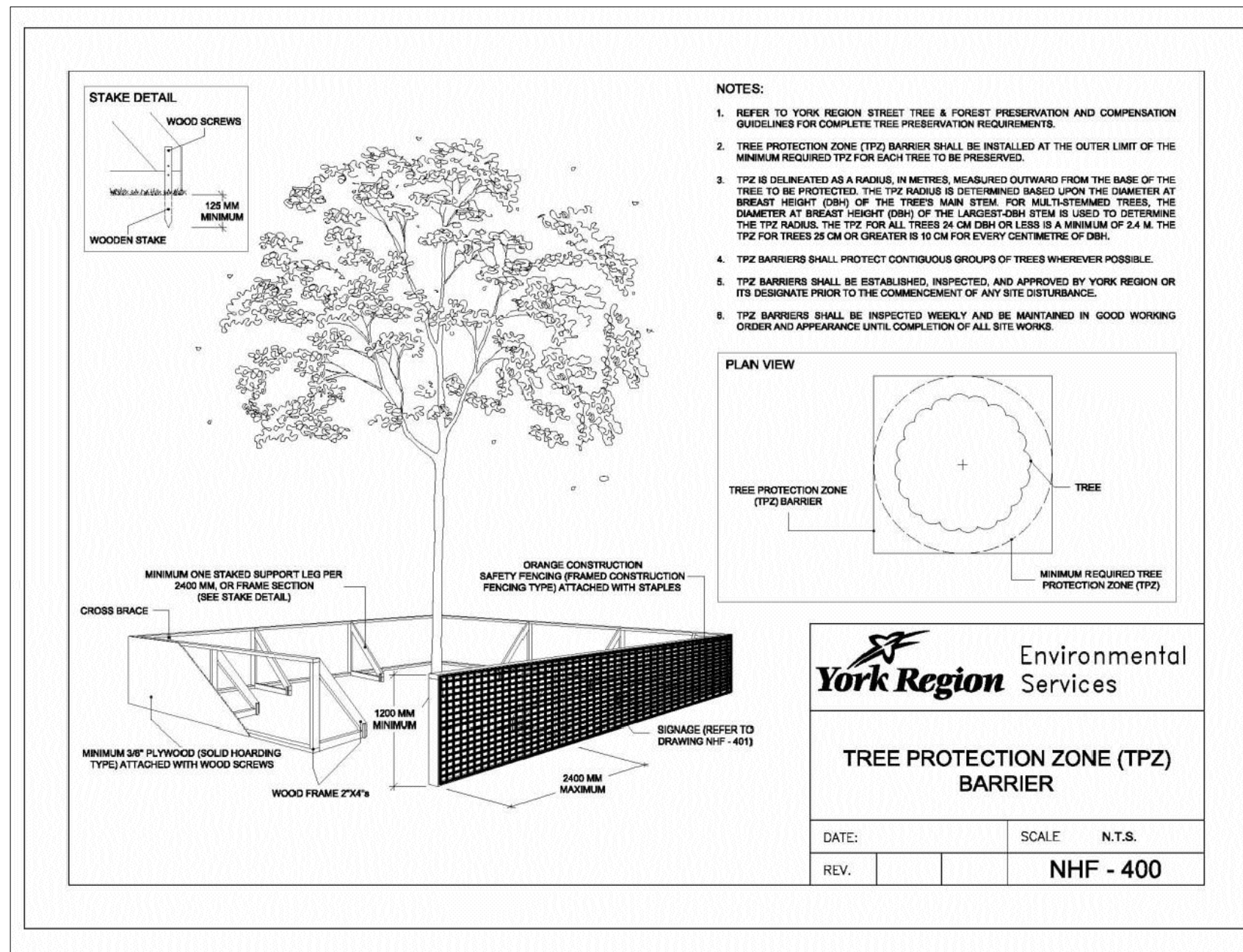
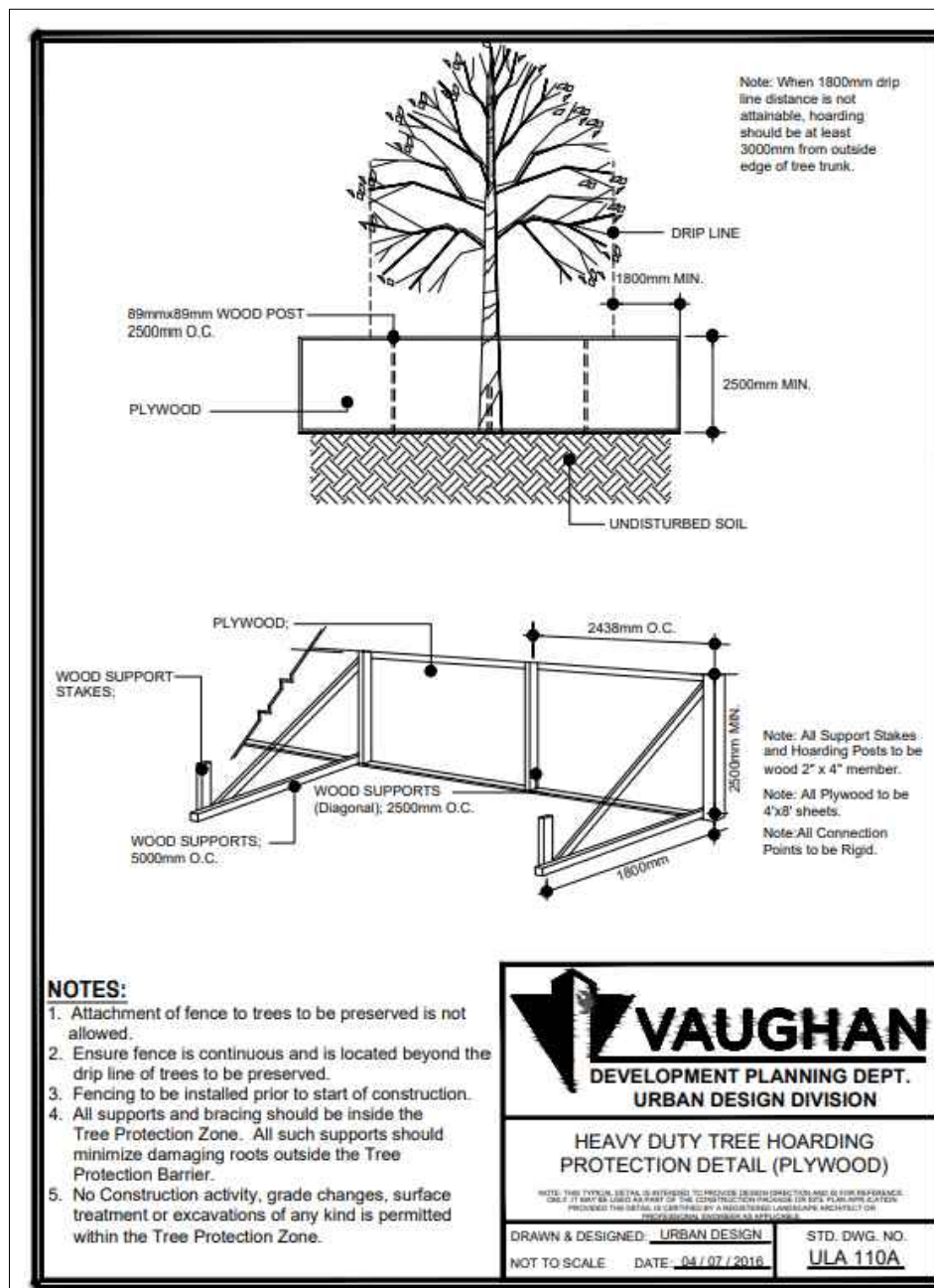
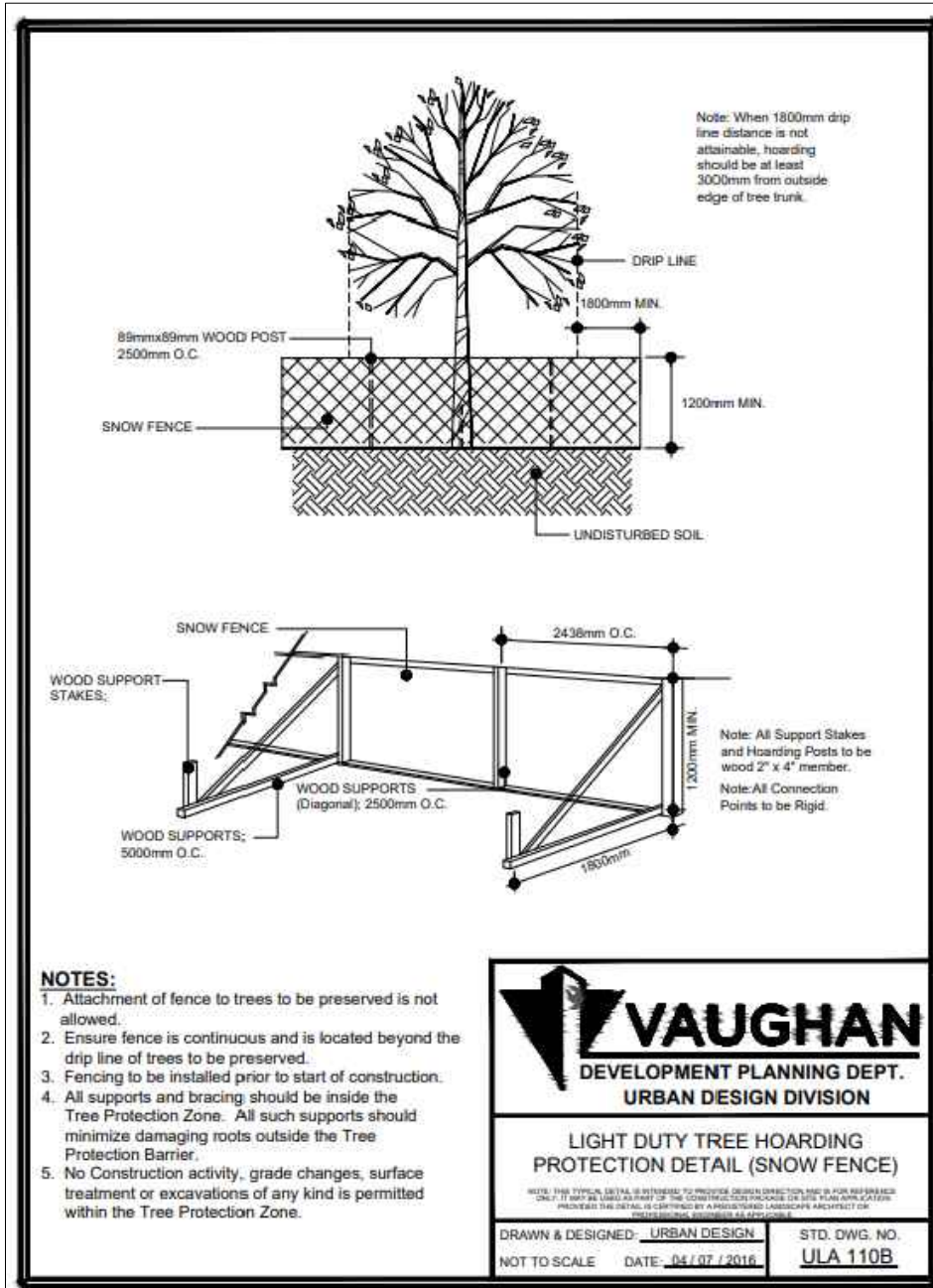


- GENERAL NOTES**
- Do not scale the drawings. All dimensions are in millimetres unless noted otherwise.
 - This drawing is to be read in conjunction with the overall master plan and engineering drawings prepared by the project engineer, and site plans prepared by architect.
 - The contractor shall check and verify all existing and proposed grading and conditions on the project and immediately report any discrepancies to the consultant before proceeding with any work.
 - The contractor is to be aware of all existing and proposed services and utilities. The contractor is responsible for having all underground services and utility lines staked by each agency having jurisdiction prior to commencing work.
 - This drawing is to be used for development approval only. For layout of all work refer to construction drawings.
 - Plant quantities indicated on the plan supercede the quantities from the plant list (report any discrepancies to the landscape architect).
 - Do not leave any holes open overnight.
 - Keep area outside construction zone clean and useable by others at all times. Contractor shall thoroughly clean areas surrounding the construction zone at the end of each work day.
 - Contractor to make good any and all damages outside of the development area that may occur as a result of construction at no extra cost.
 - This drawing is Copyright MHBC, 2022.

REVISION NO.	DATE	ISSUED / REVISION	BY
3.	APRIL 26, 2022	ISSUED FOR RE-SUBMISSION	HH
2.	NOVEMBER 23, 2021	ISSUED FOR RE-SUBMISSION	HH
1.	OCTOBER 28, 2020	ISSUED FOR SUBMISSION	HH

MHBC PLANNING URBAN DESIGN & LANDSCAPE ARCHITECTURE
230-7050 WESTON ROAD WOODBRIDGE, ON, L4L 8G7 | P: 905 761 5588 F: 905 761 5589 | WWW.MHBCPLAN.COM

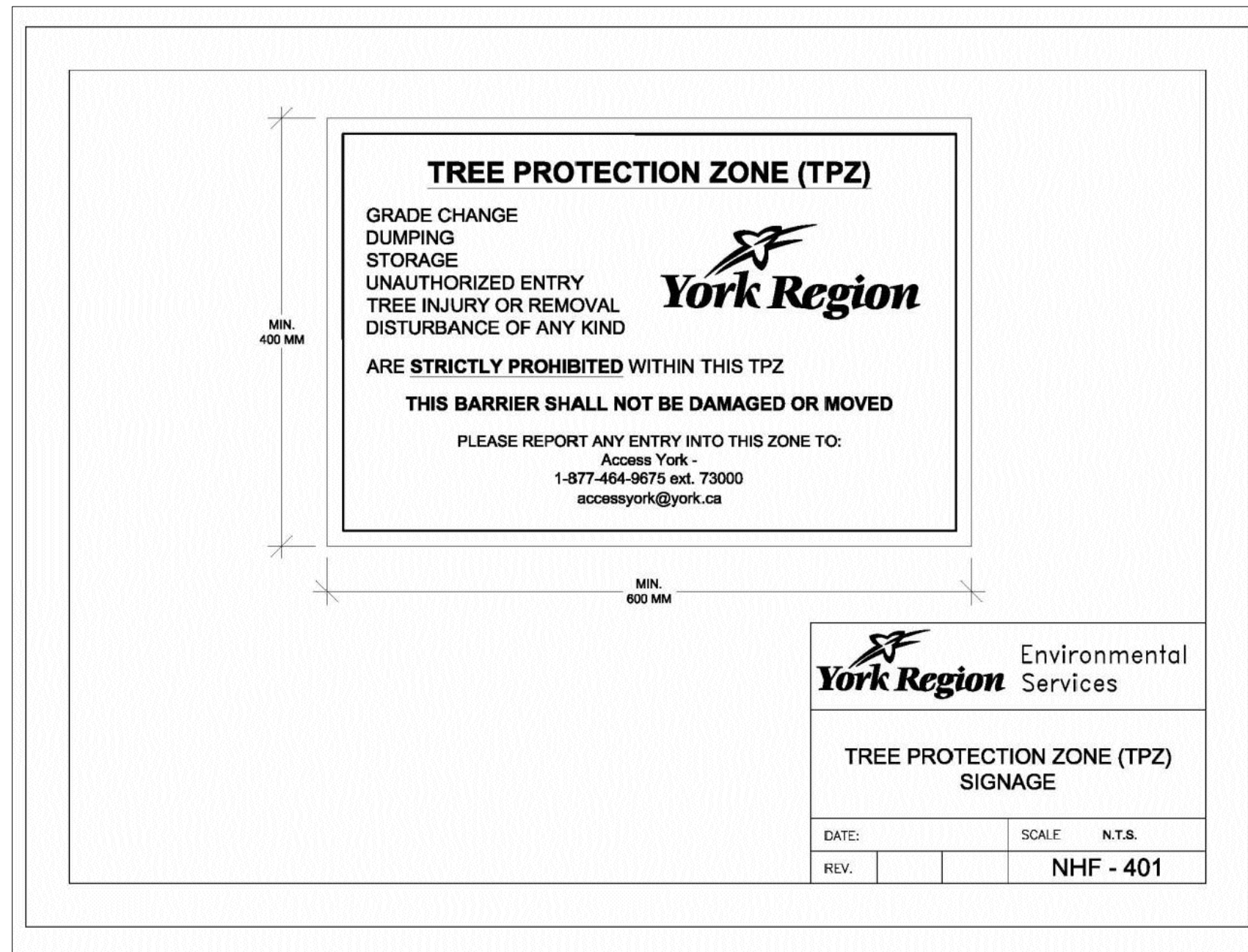
STAMP	DATE	DRAWN BY	PLAN SCALE	FILE NO.	CHECKED BY	REGION FILE NO.	PROJECT	FILE NAME	DWG NO.
	OCTOBER, 2019	CC	AS NOTED	19270A	N.M.	SP.20.V.0266	9575 KEELE STREET MAPLE, ONTARIO	TREE INVENTORY PLAN	TI-1



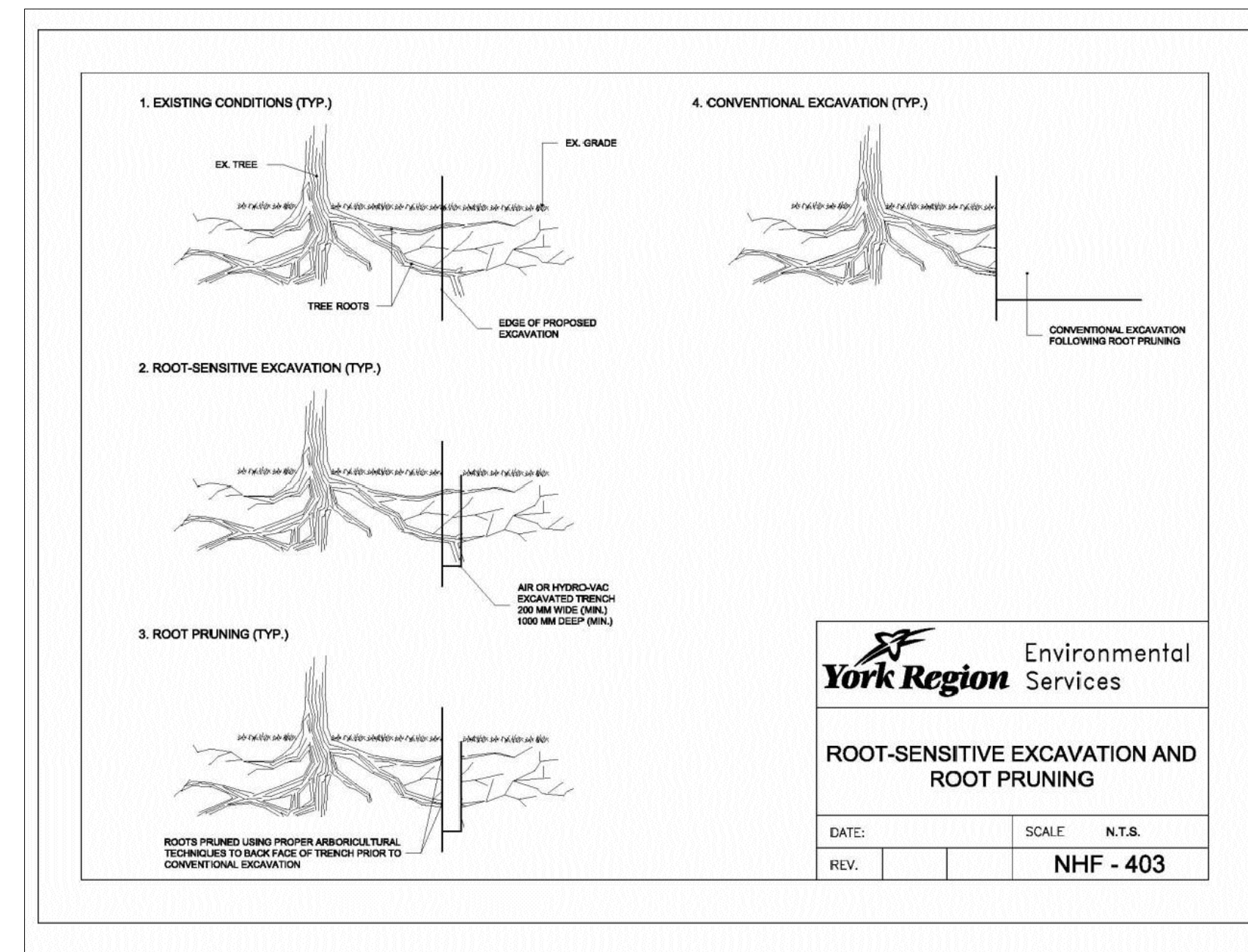
1 TREE HOARDING PROTECTION
TI-2 CITY OF VAUGHAN DETAIL

2 TREE PROTECTION ZONE BARRIER
TI-2 YORK REGION STANDARD

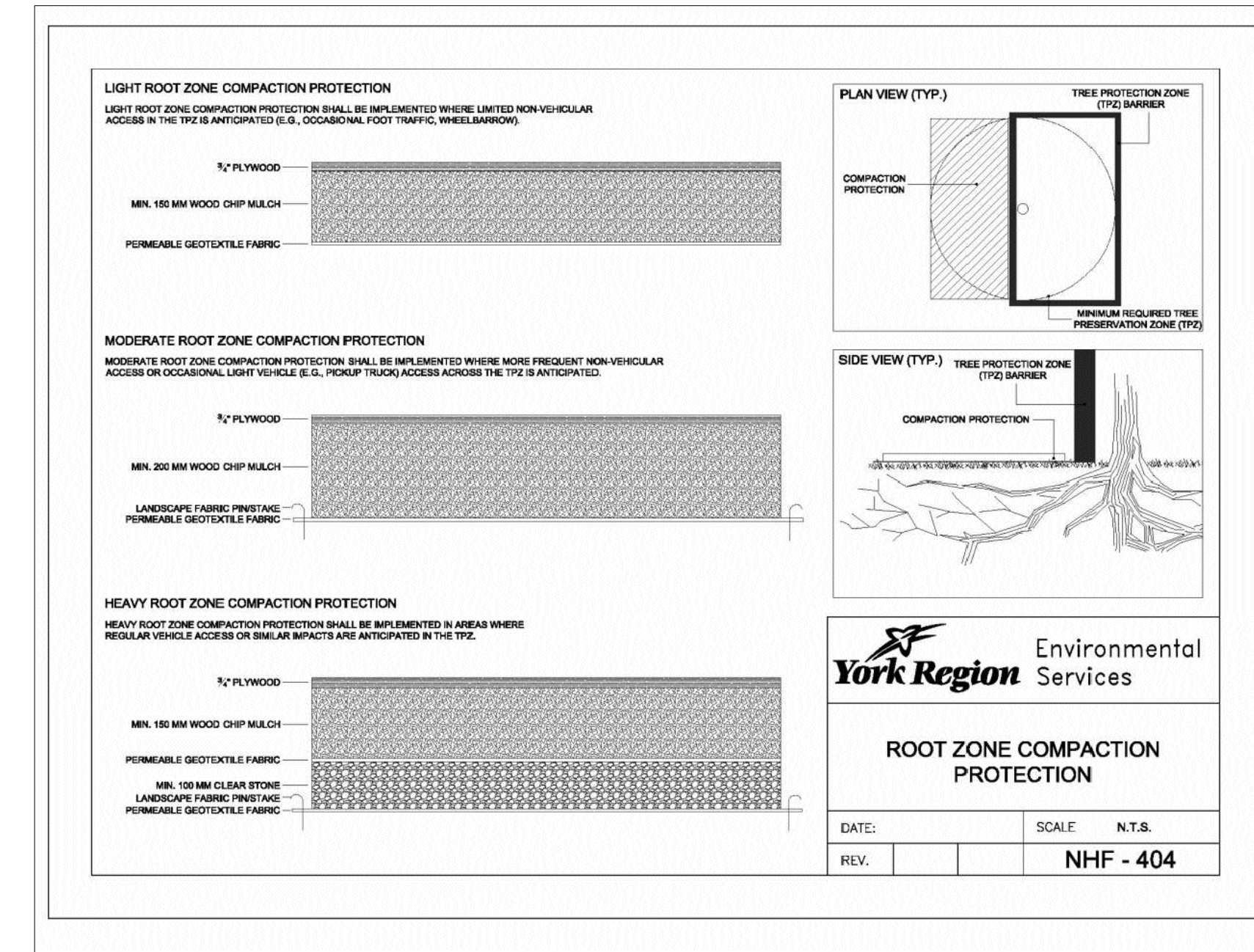
3 TREE PROTECTION NOTES
TI-2 YORK REGION STANDARD



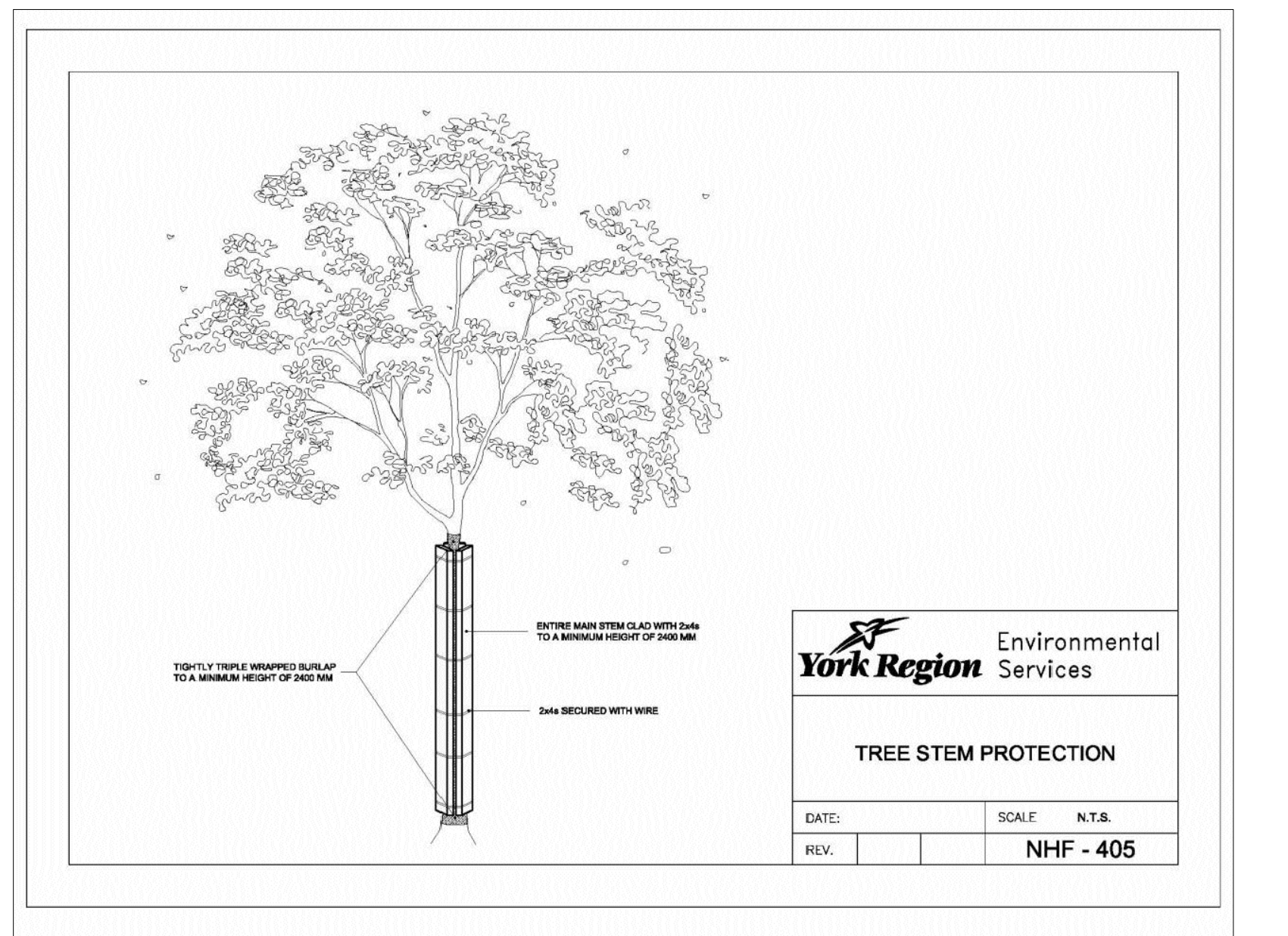
4 TREE PROTECTION SIGNAGE
TI-2 YORK REGION STANDARD



5 ROOT-SENSITIVE EXCAVATION AND ROOF PRUNING
TI-2 YORK REGION STANDARD



6 ROOT ZONE COMPACTION PROTECTION
TI-2 YORK REGION STANDARD



7 TREE STEM PROTECTION
TI-2 YORK REGION STANDARD

- GENERAL NOTES**
- Do not scale the drawings. All dimensions are in millimetres unless noted otherwise.
 - This drawing is to be read in conjunction with the overall master plan and engineering drawings prepared by the project engineer, and site plans prepared by architect.
 - The contractor shall check and verify all existing and proposed grading and conditions on the project and immediately report any discrepancies to the consultant before proceeding with any work.
 - The contractor is to be aware of all existing and proposed services and utilities. The contractor is responsible for having all underground services and utility lines staked by each agency having jurisdiction prior to commencing work.
 - This drawing is to be used for development approval only. For layout of all work refer to construction drawings.
 - Plant quantities indicated on the plan supercede the quantities from the plant list (report any discrepancies to the landscape architect).
 - Do not leave any holes open overnight.
 - Keep area outside construction zone clean and useable by others at all times. Contractor shall thoroughly clean areas surrounding the construction zone at the end of each work day.
 - Contractor to make good any and all damages outside of the development area that may occur as a result of construction at no extra cost.
 - This drawing is Copyright MHBC, 2022.

REVISION NO.	DATE	ISSUED / REVISION	BY
3.	APRIL 26, 2022	ISSUED FOR RE-SUBMISSION	HH
2.	NOVEMBER 23, 2021	ISSUED FOR RE-SUBMISSION	HH
1.	OCTOBER 28, 2020	ISSUED FOR SUBMISSION	HH

MHBC PLANNING URBAN DESIGN & LANDSCAPE ARCHITECTURE
230-7050 WESTON ROAD WOODBRIDGE, ON, L4L 8G7 | P: 905 761 5588 F: 905 761 5589 | WWW.MHBCPLAN.COM

ASSOCIATION OF LANDSCAPE ARCHITECTS
ONTOARIO MEMBER

ISSUED FOR SPA ONLY
NOT FOR CONSTRUCTION

All drawings and specifications are instruments of service and will remain the property of MHBC Planning and must be returned at the completion of the work. This drawing shall not be used for construction purposes unless the drawings are marked "Issues for Construction" and the professional seal is signed and dated by the landscape architect.

STAMP	DATE	OCTOBER, 2019
	DRAWN BY	CC
	PLAN SCALE	AS NOTED
	FILE NO.	19270A
	CHECKED BY	N.M.
	REGION FILE NO.	SP.20.V.0266
PROJECT	9575 KEELE STREET MAPLE, ONTARIO	
FILE NAME	TREE INVENTORY PLAN	DWG NO. TI-2