

1 LANDSCAPE LAYOUT PLAN
L-1 1:250

NOTE:
TREES PLANTED WITHIN THE REGIONAL ROAD ALLOWANCE SHALL CONFORM TO THE FOLLOWING REQUIREMENTS:

- ALL TREES SHALL BE PLANTED IN ACCORDANCE WITH THE YORK REGION STREET TREE PRESERVATION AND PLANTING DESIGN GUIDELINES.
- YORK REGION NATURAL HERITAGE AND FORESTRY STAFF (NH) SHALL BE PROVIDED WITH 2 WEEKS NOTIFICATION (ALEXANDRA.RYLAND@YORK.CA) TO SCHEDULE A SITE MEETING TO REVIEW PLANTING LAYOUT AS WELL AS NOTIFICATION AT THE COMPLETION OF TREE PLANTING. YORK REGION NHF MAY INSPECT THE TREES POST PLANTING AND ANNUALLY TO ENSURE THAT THE TREES ARE PLANTED AND MAINTAINED IN ACCORDANCE WITH YORK REGION STANDARDS. THE DEVELOPER SHALL BE RESPONSIBLE FOR CORRECTING ALL IDENTIFIED DEFICIENCIES.
- ALL TREE PLANTING SHALL OCCUR ONLY DURING THE FIRST APPROPRIATE PLANTING SEASON IMMEDIATELY FOLLOWING THE COMPLETION OF CONSTRUCTION BETWEEN APRIL 1ST AND JUNE 30TH.
- TREES SHALL BE SUBJECT TO A TWO (2) YEAR WARRANTY PERIOD. DURING THAT TIME THE DEVELOPER SHALL WARRANTY THE TREES AGAINST MORTALITY FROM ANY BIOTIC AND ABIOTIC FACTOR, AND/OR AS A RESULT OF INCORRECT PLANTING OR MAINTENANCE PROCEDURES.
- ALL TREES SHALL BE WATERED A MINIMUM OF FOURTEEN (14) TIMES PER YEAR THROUGHOUT THE GROWING SEASON FOR THE DURATION OF THE TWO-YEAR WARRANTY PERIOD.
- AT THE END OF THE TWO (2) YEAR WARRANTY ALL GATOR BAGS AND STAKES ARE TO BE REMOVED AND THE MULCH IS TO BE ADDED IN ACCORDANCE WITH SPECIFICATIONS.

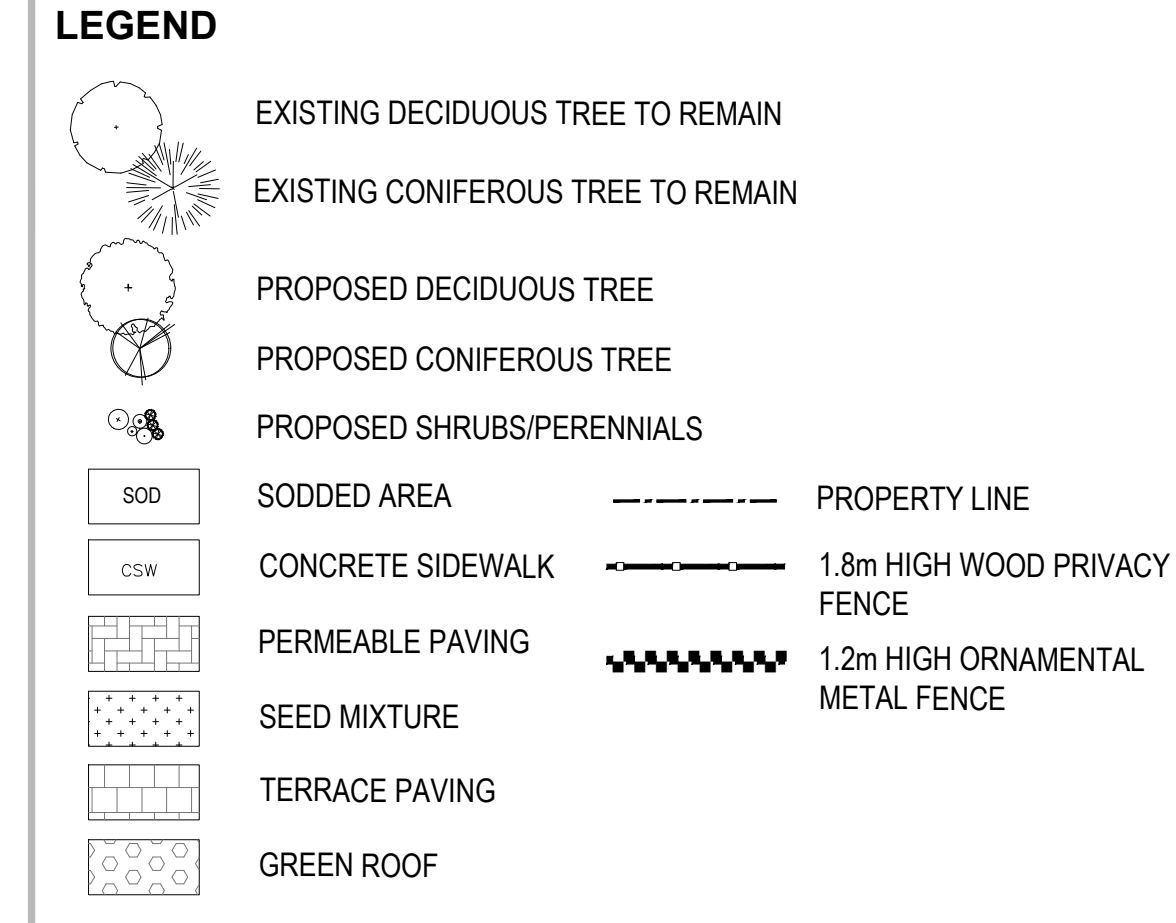
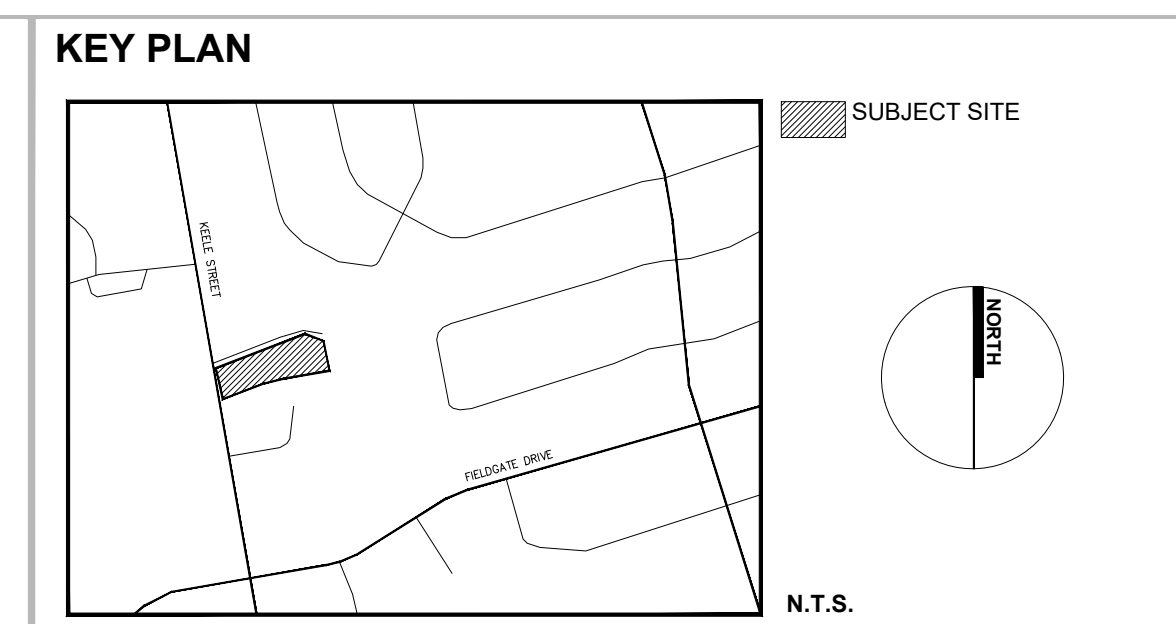
NOTE:
ROAD WIDENING ON EAST SIDE OF KEELE STREET IS BEING COMPLETED AS PART OF THE 9560 KEELE STREET SITE PLAN PROCESS CITY PROJECT NO. DA.16.116 AND WILL BE COMPLETED BY OTHERS

NOTE:
A 2-YEAR WARRANTY ON THE PLANTING MATERIAL WILL BE REQUIRED.

NOTE:
SNOW WOULD BE REMOVED FROM THE SITE.

NOTE:
SIDEWALK:
UNILOCK - 100X200X60(80MM FOR VEHICULAR AREAS)
HOLLANDSTONE PAVER BANDING - TERRA-COTTA
SIDEWALK SHOULD BE CONCRETE WITH SOLDIER COURSING ON BOTH SIDES

DRIVEWAY AND OTHER PAVED AREAS:
UNILOCK - 100X200X60(80MM FOR VEHICULAR AREAS)
HOLLANDSTONE PAVER INFILL - TERRA-COTTA
UNILOCK- 100X200X60(80MM FOR VEHICULAR AREAS)
HOLLANDSTONE PAVER BANDING - DARK CHARCOAL



- GENERAL NOTES**
- Do not scale the drawings. All dimensions are in millimetres unless noted otherwise.
 - This drawing is to be read in conjunction with the overall master plan and engineering drawings and site plans.
 - The contractor shall check and verify all existing and proposed grading and conditions on the project and immediately report any discrepancies to the consultant before proceeding with any work.
 - The contractor is to be aware of all existing and proposed services and utilities. The contractor is responsible for having all underground services and utility lines staked by each agency having jurisdiction prior to commencing work.
 - This drawing is to be used for development approval only. For layout of all work refer to construction drawings.
 - Plant quantities indicated on the plan supercede the quantities from the plant list (report any discrepancies to the landscape architect).
 - Do not leave any holes open overnight.
 - Keep area outside construction zone clean and useable by others at all times. Contractor shall thoroughly clean areas surrounding the construction zone at the end of each work day.
 - Contractor to make good any and all damages outside of the development area that may occur as a result of construction at no extra cost.
 - This drawing is Copyright MHBC 2022.

REVISION NO.	DATE	ISSUED / REVISION	BY
5.	DECEMBER 21, 2022	ISSUED FOR RE-SUBMISSION	HH
4.	AUGUST 25, 2022	ISSUED FOR RE-SUBMISSION	HH
3.	APRIL 26, 2022	ISSUED FOR RE-SUBMISSION	HH
2.	NOVEMBER 23, 2021	ISSUED FOR RE-SUBMISSION	HH
1.	NOVEMBER 10, 2020	ISSUED FOR SUBMISSION	HH

MHBC PLANNING URBAN DESIGN & LANDSCAPE ARCHITECTURE
230-7050 WESTON ROAD WOODBRIDGE, ON, L4L 8G7 | P: 905.761.5588 F: 905.761.5589 | WWW.MHBCPLAN.COM

STAMP	DATE	ISSUED FOR SPA ONLY NOT FOR CONSTRUCTION
	AUGUST 2020	
	DRAWN BY	H.H.
	FILE NO.	19270A
	CHECKED BY	N.M.
	CITY FILE NO.	DA.20.058 + Z.20.035
PROJECT	9575 KEELE STREET MAPLE, ONTARIO	
FILE NAME	LANDSCAPE LAYOUT PLAN	DWG NO. L1
SOURCE	N:\19270\A - 9575 Keele St (Maple)\3. Work in Progress\Landscapes\19270A - Landscape Plan - 12-14-22.dwg	

**ATTACHMENT 8
9575 KEELE**

KEY PLAN



LEGEND

- EXISTING DECIDUOUS TREE TO REMAIN
- EXISTING CONIFEROUS TREE TO REMAIN
- PROPOSED DECIDUOUS TREE
- PROPOSED CONIFEROUS TREE
- PROPOSED SHRUBS/PERENNIALS
- SODDED AREA
- CONCRETE SIDEWALK
- PERMEABLE PAVING
- SEED MIXTURE
- TERRACE PAVING
- GREEN ROOF
- PROPERTY LINE
- 1.8m HIGH WOOD PRIVACY FENCE
- 1.2m HIGH ORNAMENTAL METAL FENCE

GENERAL NOTES

1. Do not scale the drawings. All dimensions are in millimetres unless noted otherwise.
2. This drawing is to be read in conjunction with the overall master plan and engineering drawings and site plans.
3. The contractor shall check and verify all existing and proposed grading and conditions on the project and immediately report any discrepancies to the consultant before proceeding with any work.
4. The contractor is to be aware of all existing and proposed services and utilities. The contractor is responsible for having all underground services and utility lines staked by each agency having jurisdiction prior to commencing work.
5. This drawing is to be used for development approval only. For layout of all work refer to construction drawings.
6. Plant quantities indicated on the plan supercede the quantities from the plant list (report any discrepancies to the landscape architect).
7. Do not leave any holes open overnight.
8. Keep area outside construction zone clean and useable by others at all times. Contractor shall thoroughly clean areas surrounding the construction zone at the end of each work day.
9. Contractor to make good any and all damages outside of the development area that may occur as a result of construction at no extra cost.
10. This drawing is Copyright MHBC 2022.

5.	DECEMBER 21, 2022	ISSUED FOR RE-SUBMISSION	HH
4.	AUGUST 25, 2022	ISSUED FOR RE-SUBMISSION	HH
3.	APRIL 26, 2022	ISSUED FOR RE-SUBMISSION	HH
2.	NOVEMBER 23, 2021	ISSUED FOR RE-SUBMISSION	HH
1.	NOVEMBER 10, 2020	ISSUED FOR SUBMISSION	HH
REVISION NO.	DATE	ISSUED / REVISION	BY

**PLANNING
URBAN DESIGN
& LANDSCAPE
ARCHITECTURE**

230-7050 WESTON ROAD WOODBRIDGE, ON, L4L 8G7 | P: 905.761.5588 F: 905.761.5589 | WWW.MHBCPLAN.COM

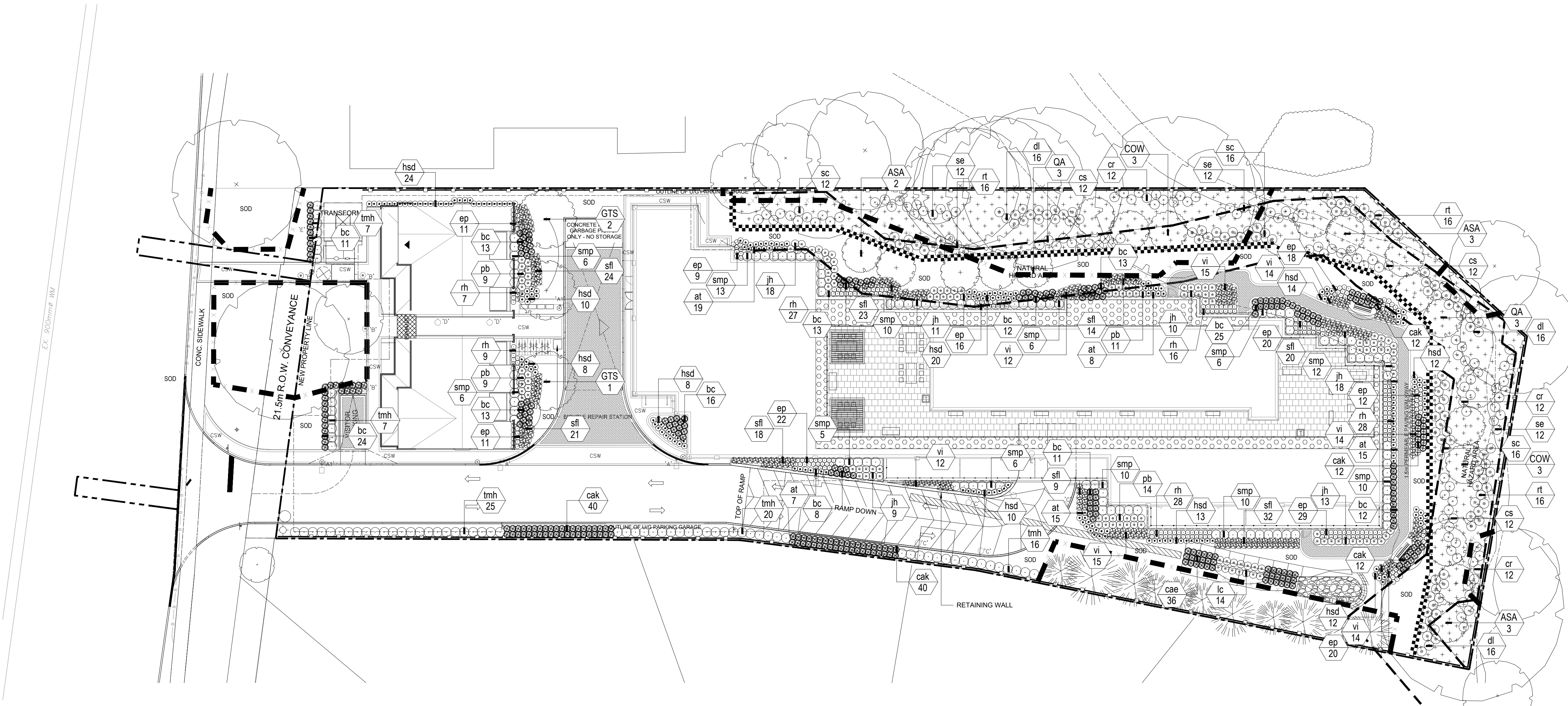
 ISSUED FOR SPA ONLY NOT FOR CONSTRUCTION <small>All drawings and specifications are instruments of service and will remain the property of MHBC Planning and must be returned at the completion of the work. This drawing shall not be used for construction purposes unless the drawings are marked 'Issued for Construction' and the professional seal is signed and dated by the landscape architect.</small>	DATE	AUGUST 2020
	DRAWN BY	H.H.
	FILE NO.	19270A
	CHECKED BY	N.M.
	CITY FILE NO.	DA.20.058 + Z.20.035
REGION FILE NO.	SP.20.V.0266	

PROJECT

9575 KEELE STREET
MAPLE, ONTARIO

FILE NAME	PLANTING PLAN	DWG NO.	L2
-----------	----------------------	---------	-----------

SOURCE
N:\19270\A - 9575 Keele St (Maple)\3. Work in Progress\Landscape\19270A - Landscape Plan - 12-14-22.dwg



1 PLANTING PLAN
L-2 1:250

PLANT LIST

Plant quantities indicated on the plan supercede the quantities from the plant list (report any discrepancies to the Landscape Architect).

KEY	QUANTITY	BOTANICAL NAME	COMMON NAME	DROUGHT TOLERANT	NATIVE	CALIPER	CONDITION	HT./SP.
DECIDUOUS TREES								
GTS	3	GLEDITSIA TRIACANTHOS 'SKYLINE'	SKYLINE HONEY-LOCUST	✓	—	60mm	S.B.	----
CONIFEROUS SHRUBS								
tmh	75	TAXUS X MEDIA 'HICKSI'	HICK'S YEWE	✓	—	----	POTTED	600mm
jh	79	JUNIPERUS HORIZONTALIS 'HUGHES'	HUGHES JUNIPER	✓	—	----	POTTED	600mm
DECIDUOUS SHRUBS								
smp	100	SYRINGA MEYERI 'PALIBIN'	DWARF KOREAN LILAC	✓	—	----	POTTED	600mm
PERENNIALS, GROUND COVERS AND GRASSES								
cak	116	CALAMAGROSTIS ACUTIFLORA 'KARL FOERSTER'	FEATHER REED GRASS	✓	—	----	3 gal. POT	500mm
hsd	131	HEMEROCALLIS 'STELLA D'ORO'	DAYLILY	✓	—	----	3 gal. POT	500mm
at	64	ASCLEPIAS TUBEROSA	BUTTERFLY MILKWEED	✓	✓	----	3 gal. POT	500mm
ep	168	ECHINACEA PURPUREA	PURPLE CONEFLOWER	✓	—	----	3 gal. POT	500mm
m	115	RUDBECKIA HIRTA	GLORIOSA DAISY	✓	✓	----	3 gal. POT	500mm
pb	43	PAEONIA 'BOWL OF BEAUTY'	PEONY	—	—	----	3 gal. POT	500mm
vi	96	VERONICA INCANA	SILVER SPEEDWELL	—	—	----	3 gal. POT	500mm
bc	171	BOUTELOUA CURTIPENDULA	SIDE OATS GRAMA	✓	✓	----	3 gal. POT	500mm
cae	36	CAREX EBURNEA	IVORY SEDGE	✓	—	----	3 gal. POT	500mm
lc	14	LOBELIA CARDINALIS	CARDINAL FLOWER	—	—	----	3 gal. POT	500mm
sfl	161	SOLIDAGO FLEXICAULIS	ZIGZAG GOLDENROD	✓	✓	----	3 gal. POT	500mm

PLANT LIST - RESTORATION

Plant quantities indicated on the plan supercede the quantities from the plant list (report any discrepancies to the Landscape Architect).

KEY	QUANTITY	BOTANICAL NAME	COMMON NAME	DROUGHT TOLERANT	NATIVE	CALIPER	COND.	HT./SP.
DECIDUOUS TREES								
ASA	8	ACER SACCHARINUM	SILVER MAPLE	—	✓	----	WHIP	120-150cm
COW	6	CARYA OVATA	SHAGBARK HICKORY	—	✓	----	WHIP	120-150cm
QA	6	QUERCUS ALBA	WHITE OAK	—	✓	----	WHIP	120-150cm
DECIDUOUS SHRUBS								
cr	36	CORNUS RACEMOSA	GRAY DOGWOOD	—	✓	----	POTTED	800mm
cs	36	CORNUS SERICEA	RED OSIER DOGWOOD	—	✓	----	POTTED	800mm
dl	48	DIERVILLA LONICERA	BUSH HONEYSUCKLE	✓	—	----	POTTED	800mm
sc	44	SAMBUCUS CANADENSIS	AMERICAN ELDERBERRY	—	✓	----	POTTED	800mm
rt	48	RHUS TYPHINA	STAGHORN SUMAC	✓	—	----	POTTED	800mm
se	36	SALIX ERIOCEPHALA	HEART-LEAVED WILLOW	—	✓	----	POTTED	800mm

*1M ON CENTER FOR SHRUBS AND 3 TO 5M ON CENTER FOR TREES

LANDSCAPE SPECIFICATIONS:

All sod shall conform to the standards of the Nursery Stock Growers Association of Ontario. All sodded areas shall be prepared with a minimum of 100mm of topsoil and sodded with #1 bluegrass - fescue nursery sod. On slopes, lay the turf pieces horizontally across the slope, starting at the bottom. For areas with a 2:1 slope or greater stake sod to hold in place with 1/2" x 1" x 12" pegs at two-foot spacings.

Unless soil tests suggest otherwise, fertilizer shall be applied as follows:
Sodded areas: 11-8-4 (11% nitrogen, 8% phosphorus, 4% potash) at 4.5 kg/m².
Planting beds: 7-7-7 (7% nitrogen, 7% phosphorus, 7% potash) at 0.12 kg/m³, and bone meal at 0.58 kg/m³ of planting soil mixture as outlined below.

All planting beds are to be continuous, and excavated to a minimum depth of 450mm unless noted otherwise. Planting beds are to be filled with a soil mixture composed of six (6) parts sand loam, two (2) parts well rotted manure, and one (1) part peat moss, in addition to the fertilizers specified above.

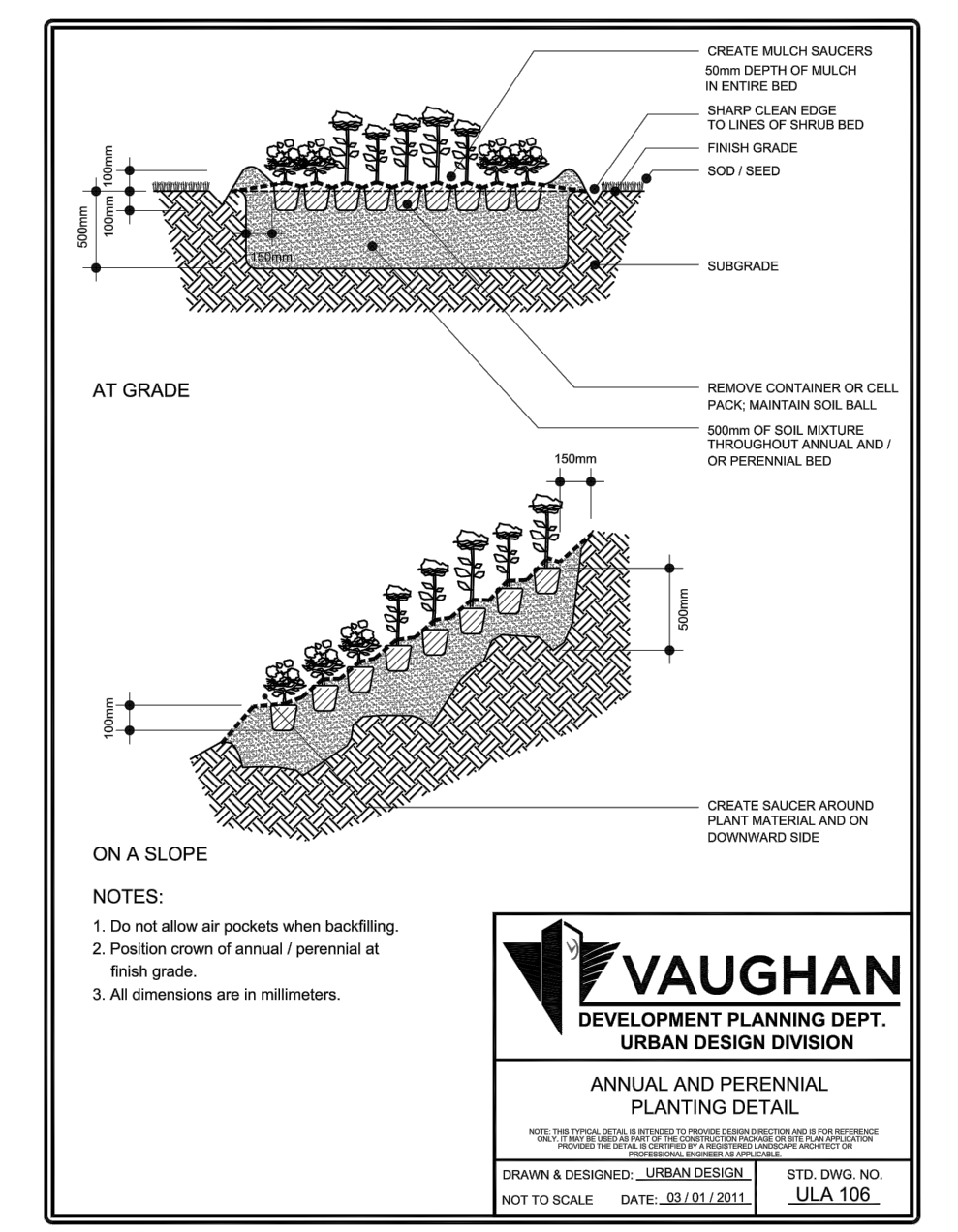
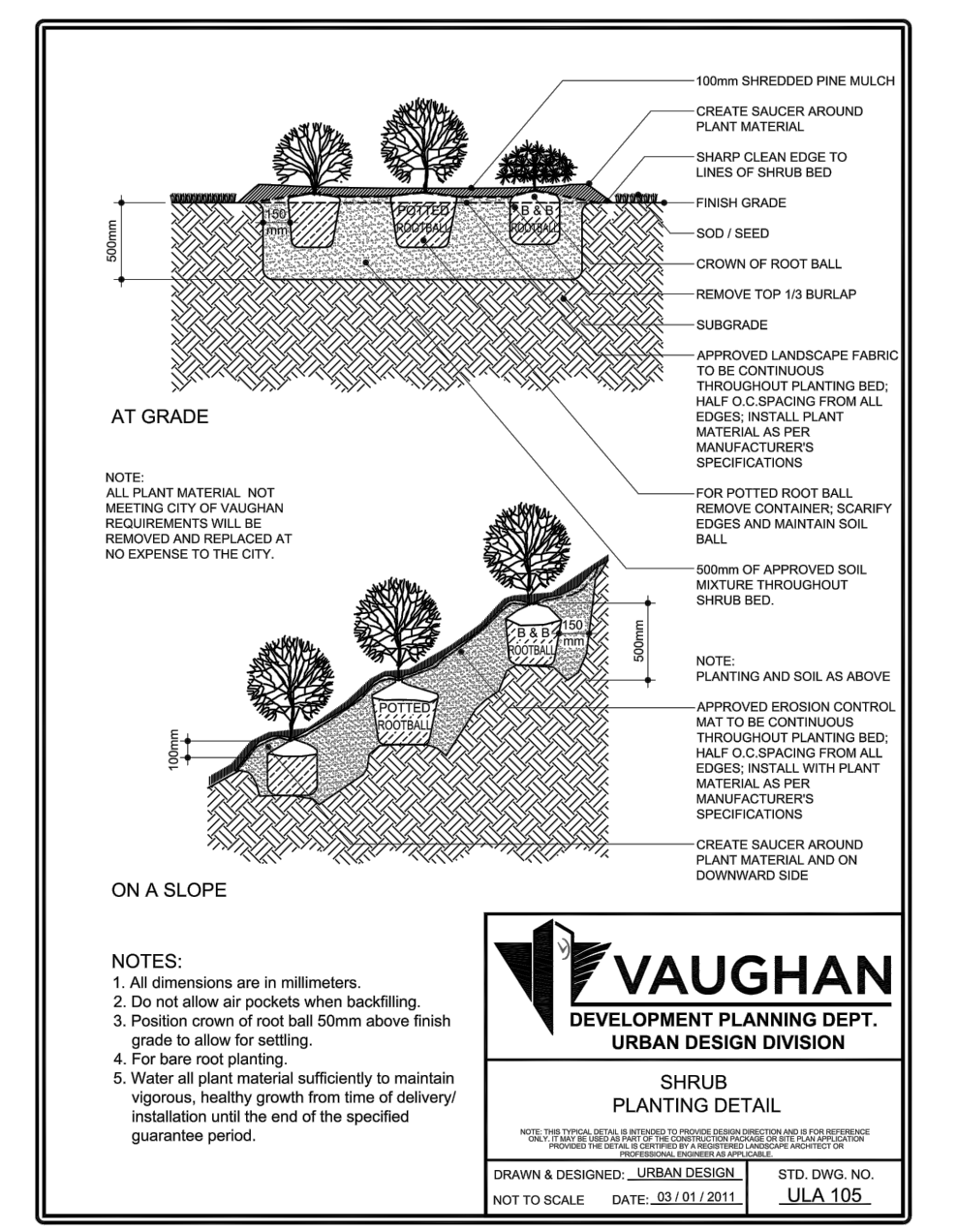
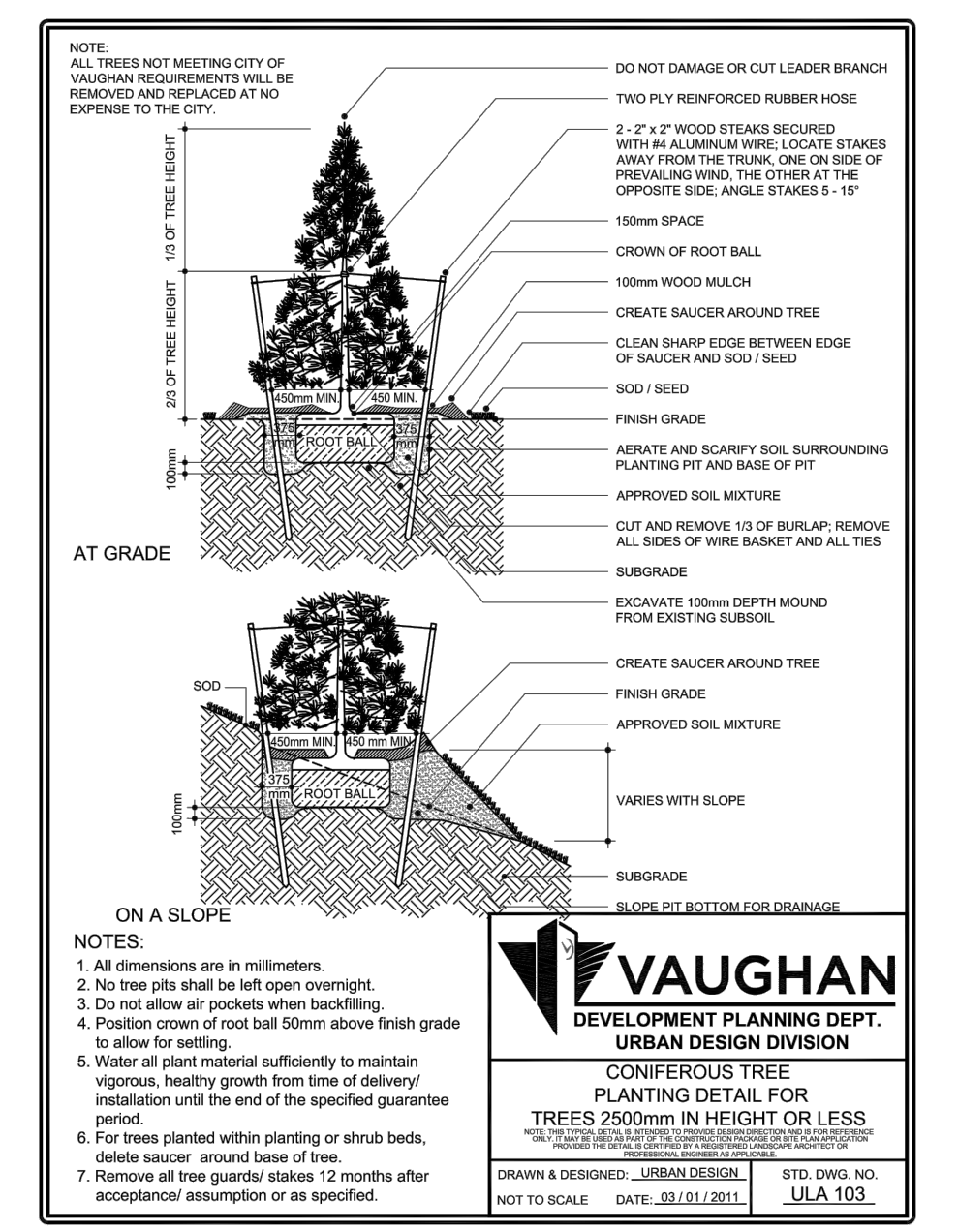
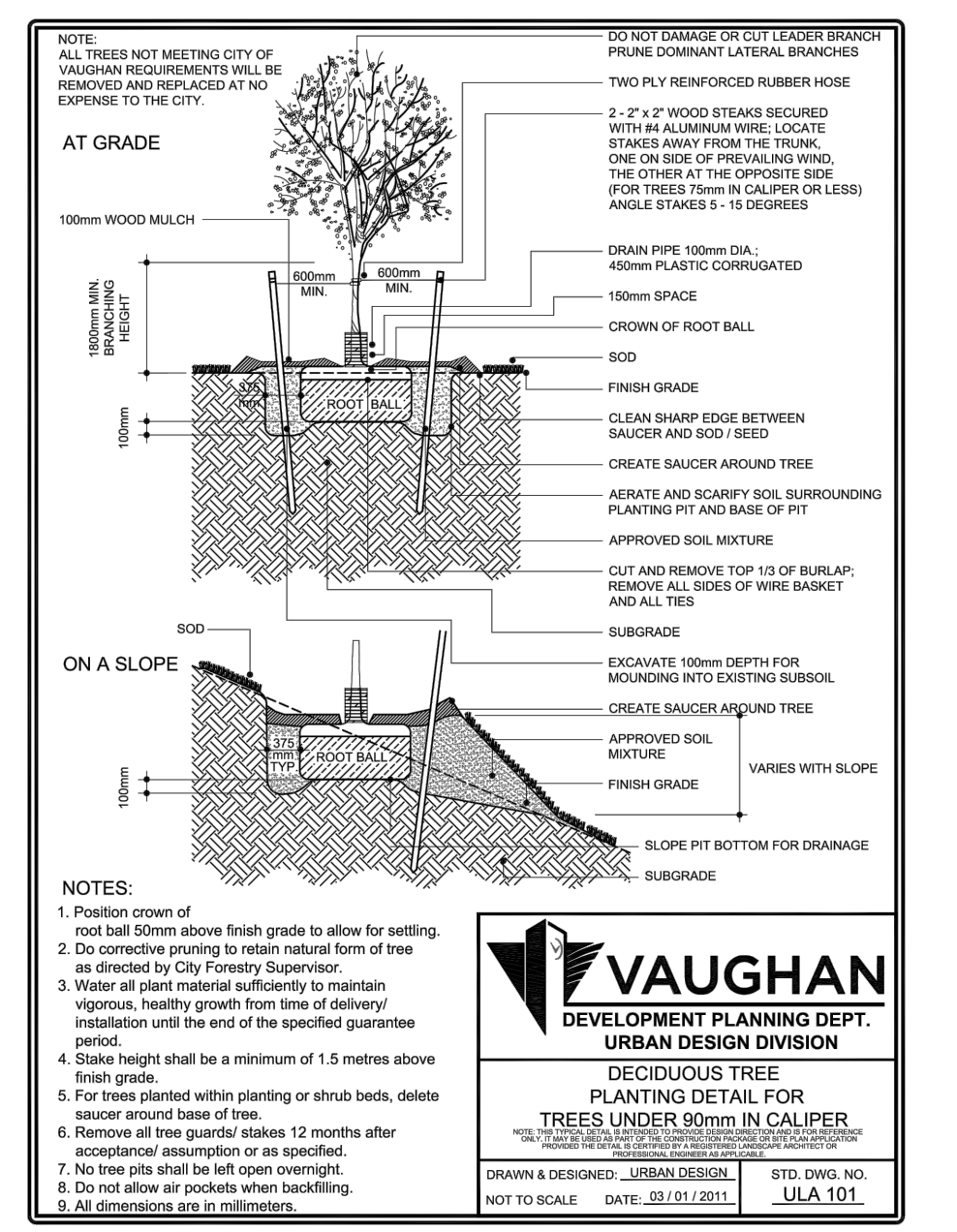
All plant material shall conform to the standards of the Canadian Nursery Trades Association. All plant material is to be clay grown stock. Install all plant material as shown on the planting plan and details. Use only viable nursery stock grown in strict accordance with proper horticultural practices which is free from damage, pests, and disease.

All beds are to be covered with a 75mm depth of clean, shredded pine bark mulch by Gro-Bark or approved equal unless noted otherwise. Guying and staking of trees shall conform to the planting details. Wrap all deciduous trees as per the specifications of the Ontario Landscape Contractors Association.

The contractor will observe proper maintenance procedures for all newly constructed landscape work as per Section 1E (Maintenance Work) of Landscape Ontario's specifications. Unless otherwise noted, this will apply during the construction period only. The contractor shall maintain all planting and sodding until final acceptance is granted by the Landscape Architect.

The contractor will be responsible for the protection of all plant material from damages resulting from winter conditions as well as rodents during the warranty period. Apply "Skoot" rodent deterrent formula (or approved equal) to all coniferous trees and all shrubs in late October as per manufacturer's directions.

The contractor shall provide a full one year guarantee (or two years if required by the municipality or owner) on all landscape works, beginning on the date that final acceptance is granted by the Landscape Architect.



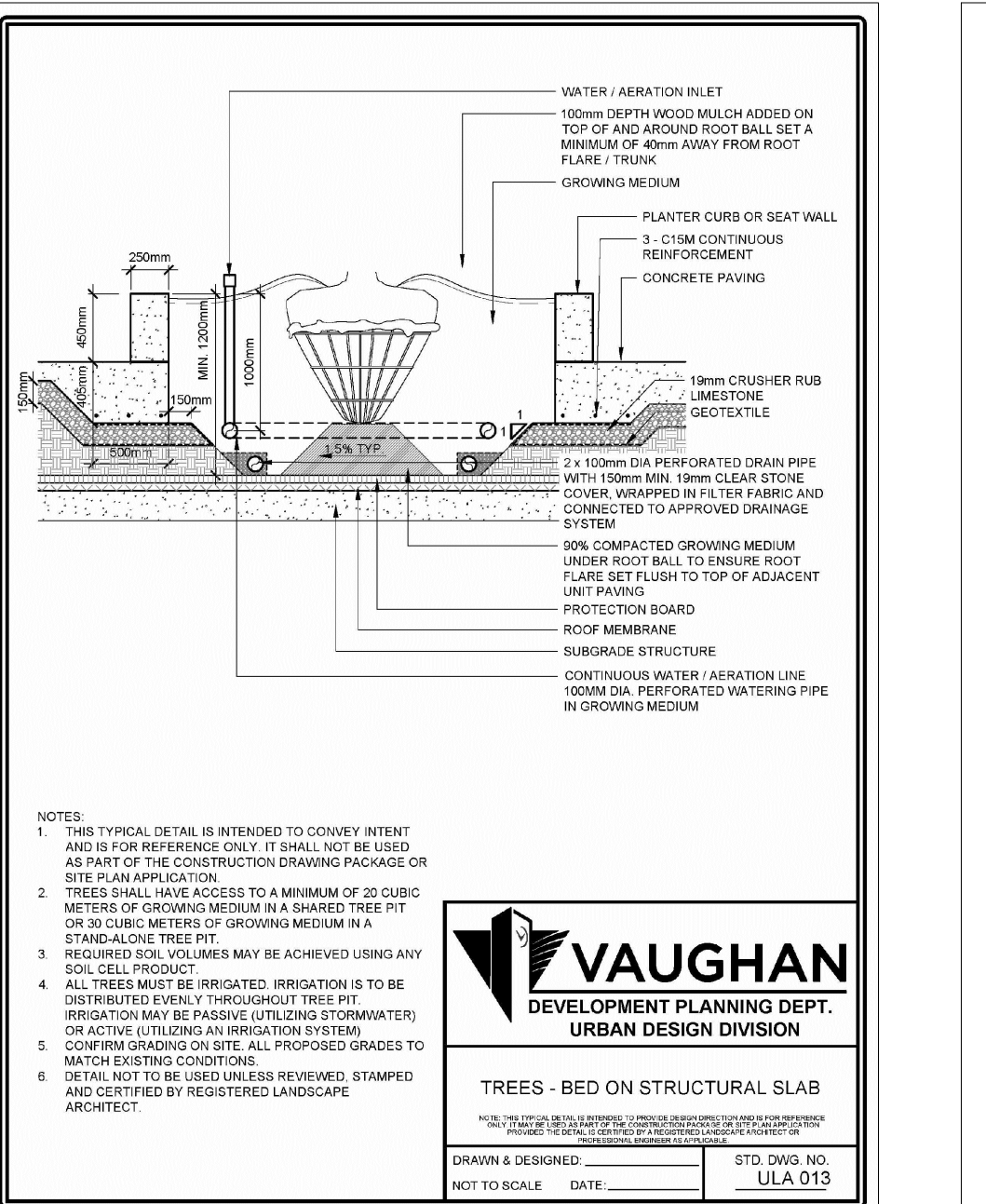
1 LANDSCAPE SPECIFICATIONS
L-3 TYPICAL DETAIL NTS

2 DECIDUOUS TREE PLANTING
L-3 TYPICAL DETAIL NTS

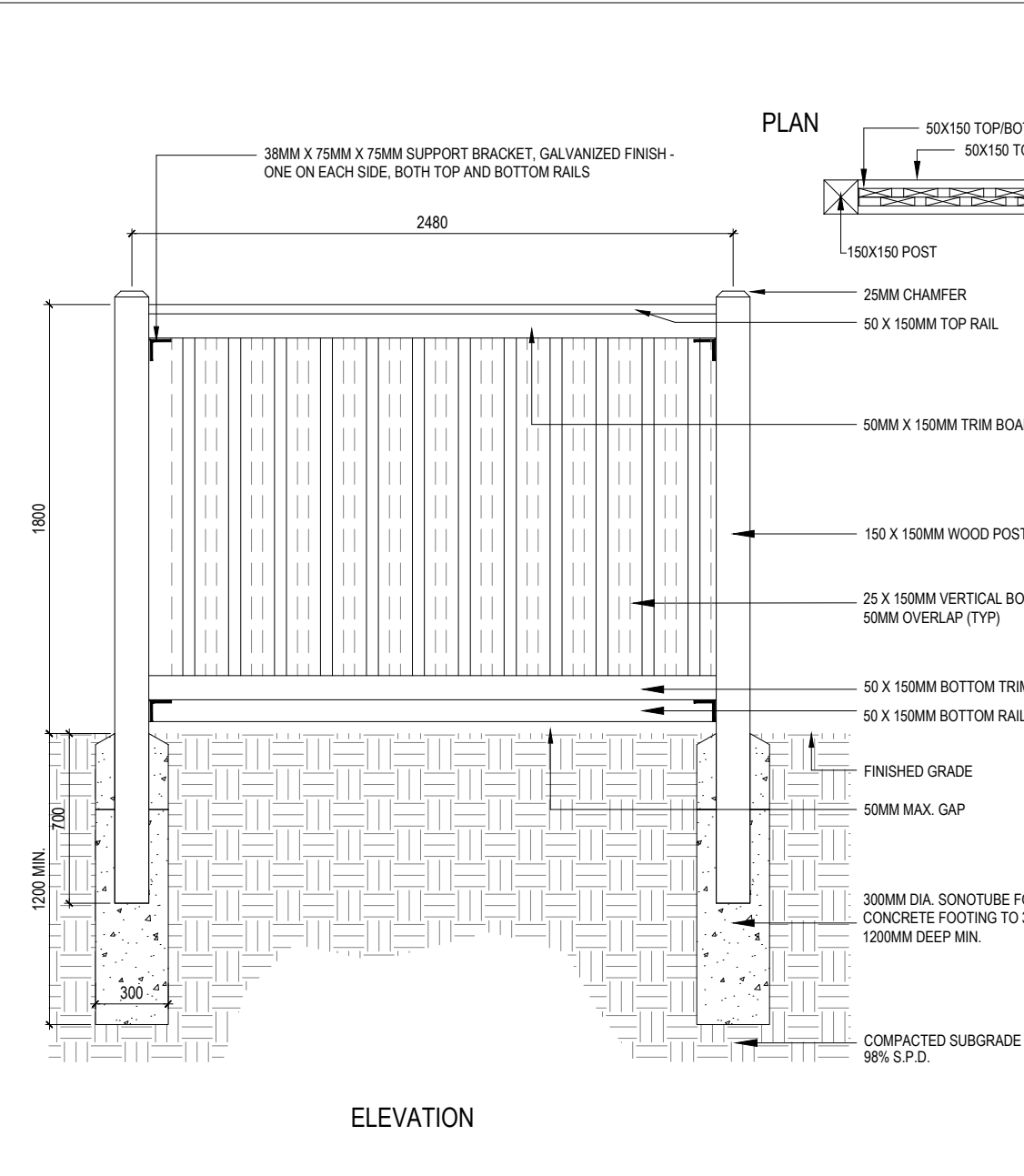
3 CONIFEROUS PLANTING
L-3 TYPICAL DETAIL NTS

4 SHRUB PLANTING
L-3 TYPICAL DETAIL NTS

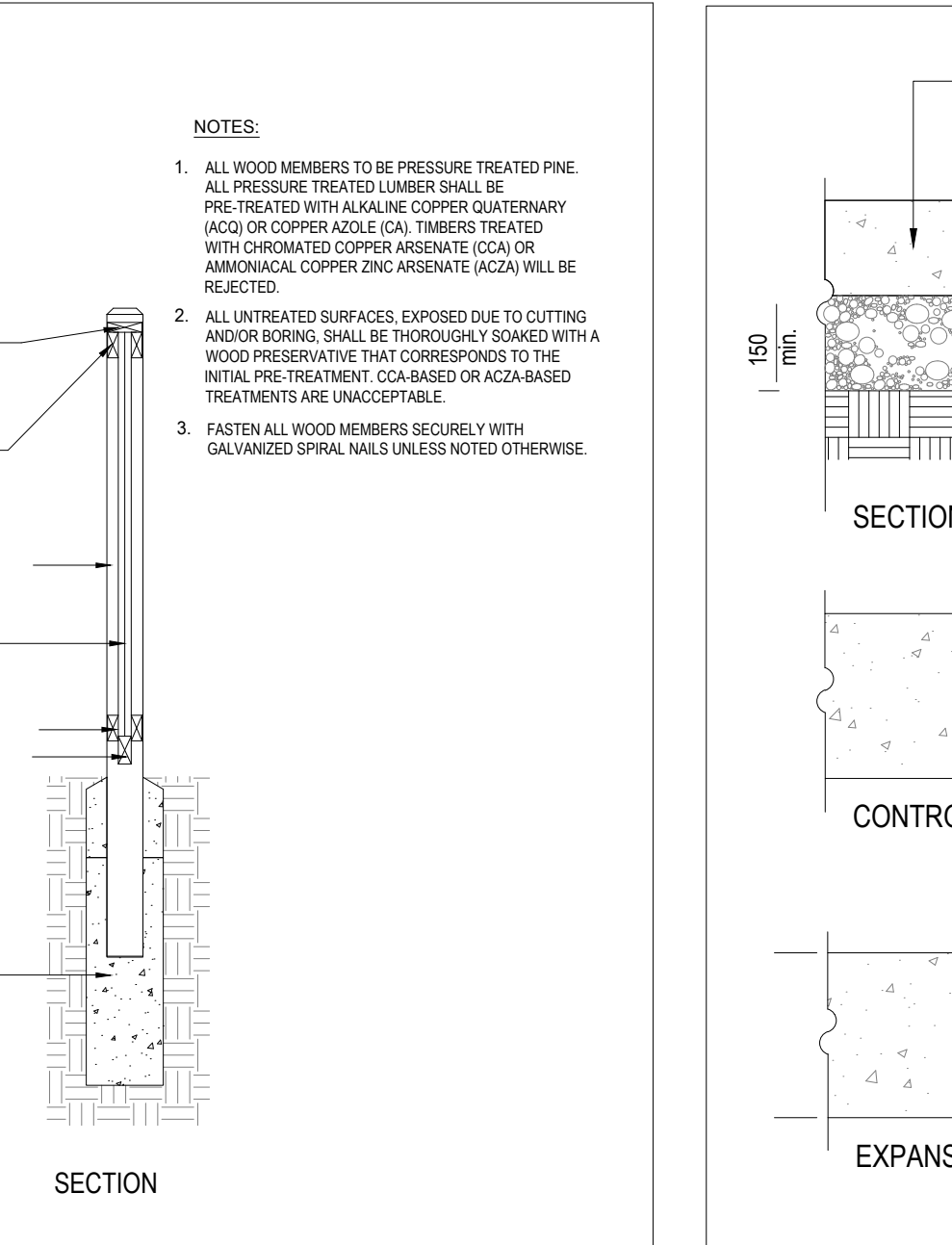
5 PERENNIAL PLANTING
L-3 TYPICAL DETAIL NTS



6 PLANTING ON SLAB
L-3 TYPICAL DETAIL NTS



7 1.8M HIGH WOOD PRIVACY FENCE
L-3 TYPICAL DETAIL NTS



8 CONCRETE PAVING
L-3 TYPICAL DETAIL NTS

UPLAND MIXTURE

APPLICATION RATE 22-25 KG/HA

BOTANICAL NAME	COMMON NAME	% OF MIX
Canada Anemone	Anemone canadensis	1%
Common Milkweed	Asclepias syriaca	2%
Carex granularis	Limestone Meadow Sedge	15%
Elymus virginicus var. virginicus	Virginia Wildrye	40%
Euthamia graminifolia	Grass-leaved Goldenrod	1%
Monarda fistulosa var. fistulosa	Wild Bergamot	1%
Oenothera biennis	Common Evening Primrose	25%
Rudbeckia hirta	Black Eyed Susan	10%
Solidago canadensis var. canadensis	Canada Goldenrod	1%
Solidago juncea	Early Goldenrod	1%
Solidago nemoralis ssp. nemoralis	Gray-stemmed Goldenrod	1%
Symphoricarum novae-angliae	New England Aster	1%
Verbena urticifolia	White Vervain	1%

NOTES:

- ALL SEED MIXTURES TO BE SUPPLIED BY ONTARIO SEED COMPANY LTD. (519) 886-0557 (OR APPROVED EQUAL).
- MIX IS DESIGNED TO BE APPLIED AS PER MANUFACTURER'S SPECIFICATIONS.
- SEED ANNUAL RYEGRASS AS A NURSE CROP AND TO ENHANCE EROSION CONTROL AT 25 kg per hectare.
- PREPARE ALL DISTURBED AREAS TO BE SEEDING WITH MIN 100MM OF SOIL/COMPOST MIXTURE.

9 HYDROSEED MIXTURE
L-3 TYPICAL DETAIL NTS

SEEDING SPECIFICATIONS

FERTILIZER SHALL BE COMBINED WITH SEED MIX AT THE FOLLOWING RATE PER HECTARE:

5-20-20 ANALYSIS	450kg
32-0-0 ANALYSIS	115kg
(SULPHUR COATED AREA)	
0-46-0 ANALYSIS	225kg

HYDRAULIC MULCH TO BE APPROVED BY THE LANDSCAPE ARCHITECT AND SHALL BE APPLIED AT THE RATE OF 2100kg PER HECTARE.

THE CONTRACTOR SHALL NOT CARRY OUT THE WORK UNDER ADVERSE WEATHER CONDITIONS SUCH AS HIGH WIND, FROZEN GROUND OR GROUND COVERED WITH SNOW, ICE OR STANDING WATER.

A SOIL TEST SHOULD BE PERFORMED BY A COMPETENT CONTRACTOR TO VERIFY MIXTURE AND PERCENTAGES REQUIRED.

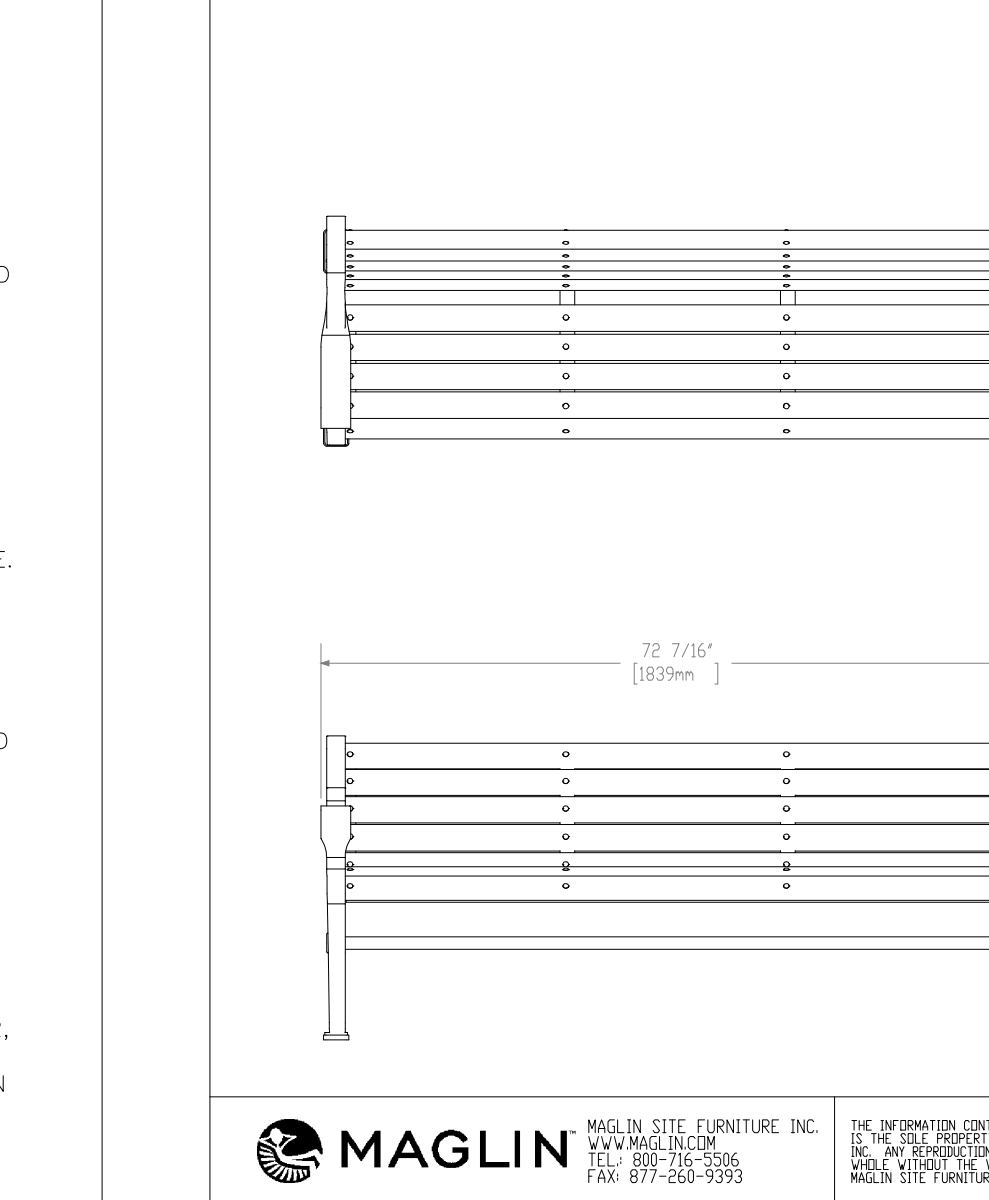
PREPARATION:
GRADE SUB-GRADE, ELIMINATE UNEVEN AREAS AND LOW SPOTS, ENSURE POSITIVE DRAINAGE. REMOVE DEBRIS, ROOTS, BRANCHES, STONES IN EXCESS OF 50MM DIAMETER AND OTHER DELETERIOUS MATERIALS. REMOVE SUBSOIL THAT HAS BEEN CONTAMINATED WITH OIL, GASOLINE OR CALCIUM CHLORIDE, DISPOSE OF REMOVED MATERIAL AS DIRECTED BY LANDSCAPE ARCHITECT.

GRADE SUB-GRADE FOR SEEDING TO A UNIFORM SURFACE AND REMOVE VEGETATION WHICH MAY INTERFERE WITH SEEDING OPERATIONS. LOOSEN SOIL TO DEPTH OF 25MM MINIMUM AND REMOVE STONES AND FOREIGN MATERIAL WHICH PROTRUDE MORE THAN 75MM ABOVE THE SURFACE.

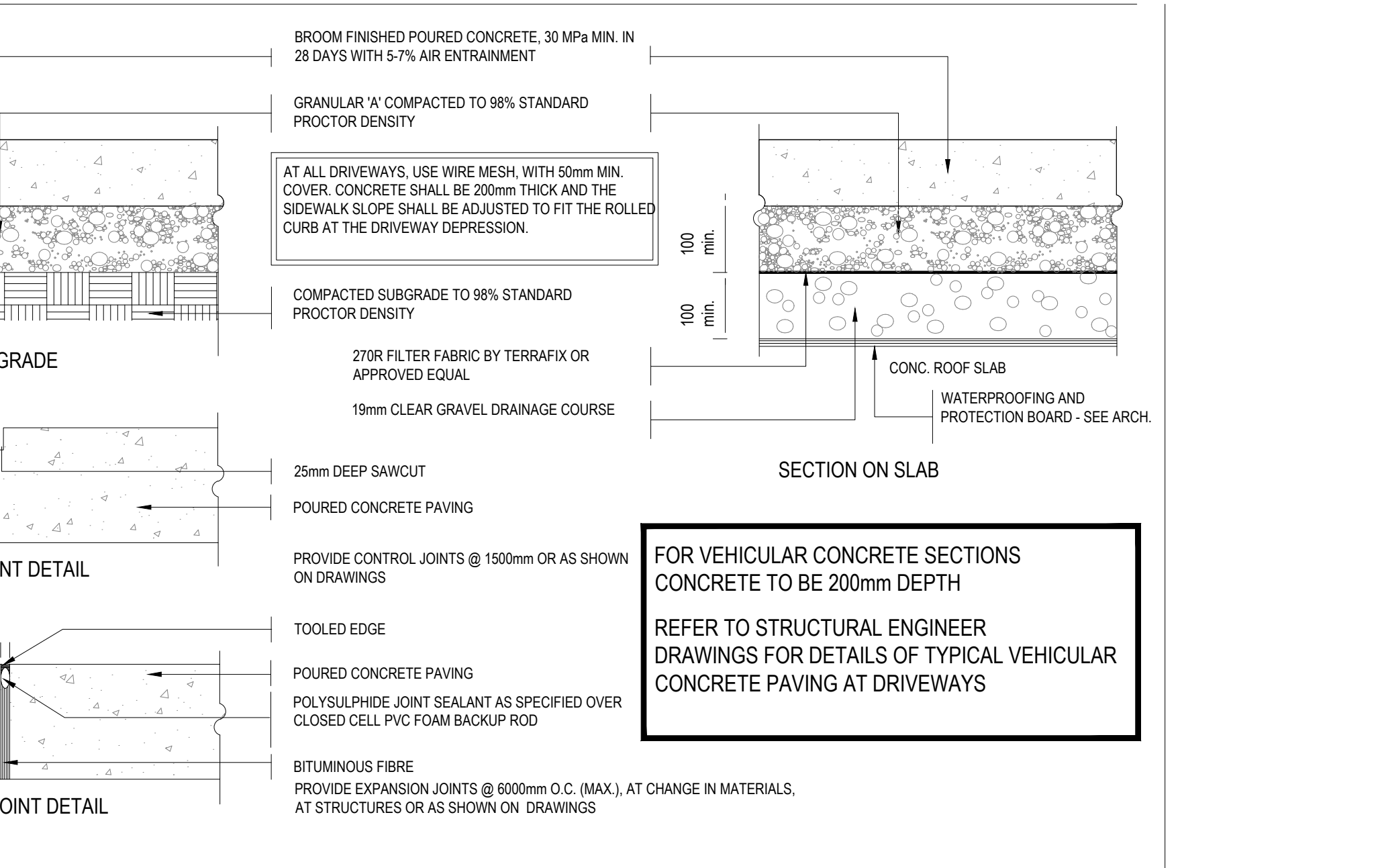
CONTRACTOR TO SUPPLY AND INSTALL 100mm (4") LAYER OF TOPSOIL OVER THE AREA TO BE SEEDING PRIOR TO SEEDING. SEEDING SHALL OCCUR IMMEDIATELY FOLLOWING INSTALLATION OF TOPSOIL. IF A DELAY OCCURS, THE CONTRACTOR IS RESPONSIBLE FOR REMOVING ALL WEEDS PRIOR TO SEEDING, SHOULD THEY FAIL TO EXECUTE SEEDING IN A TIMELY MANNER.

MAINTENANCE:
SEEDING AREAS TO BE MAINTAINED BY CONTRACTOR ENSURING ADEQUATE WATER, FERTILIZER, ANNUAL MOWINGS (2-3 YEAR ONE, AND 1-2 YEAR TWO), MAINTENANCE AND REPAIR UNTIL SEEDING AREAS ARE PROPERLY ESTABLISHED. AREAS SEEDING IN FALL WILL BE ACCEPTED IN FOLLOWING SPRING, ONE MONTH AFTER START OF GROWING SEASON PROVIDED ACCEPTANCE CONDITIONS ARE FULFILLED.

10 BENCH
L-3 TYPICAL DETAIL NTS



10 BENCH
L-3 TYPICAL DETAIL NTS



11 YORK REGION SHRUB PLANTING
L-3 TYPICAL DETAIL NTS

- GENERAL NOTES**
- Do not scale the drawings. All dimensions are in millimetres unless noted otherwise.
 - This drawing is to be read in conjunction with the overall master plan and engineering drawings and site plans.
 - The contractor shall check and verify all existing and proposed grading and conditions on the project and immediately report any discrepancies to the consultant before proceeding with any work.
 - The contractor is to be aware of all existing and proposed services and utilities. The contractor is responsible for having all underground services and utility lines staked by each agency having jurisdiction prior to commencing work.
 - This drawing is to be used for development approval only. For layout of all work refer to construction drawings.
 - Plant quantities indicated on the plan supercede the quantities from the plant list (report any discrepancies to the landscape architect).
 - Do not leave any holes open overnight.
 - Keep area outside construction zone clean and useable by others at all times. Contractor shall thoroughly clean areas surrounding the construction zone at the end of each work day.
 - Contractor to make good any and all damages outside of the development area that may occur as a result of construction at no extra cost.
 - This drawing is Copyright MHBC 2022.

5.	DECEMBER 21, 2022	ISSUED FOR RE-SUBMISSION	HH
4.	AUGUST 25, 2022	ISSUED FOR RE-SUBMISSION	HH
3.	APRIL 26, 2022	ISSUED FOR RE-SUBMISSION	HH
2.	NOVEMBER 23, 2021	ISSUED FOR RE-SUBMISSION	HH
1.	NOVEMBER 10, 2020	ISSUED FOR SUBMISSION	HH
REVISION NO.	DATE	ISSUED / REVISION	BY

MHBC PLANNING URBAN DESIGN & LANDSCAPE ARCHITECTURE

230-7050 WESTON ROAD WOODBRIDGE, ON, L4L 8G7 | P: 905 761 5588 F: 905 761 5589 | WWW.MHBCPLAN.COM

ASSOCIATION OF LANDSCAPE ARCHITECTS

ISSUED FOR SPA ONLY
NOT FOR CONSTRUCTION

9575 KEELE STREET
MAPLE, ONTARIO

19270A

DA.20.058 + 2.20.035

SP.20.V.0266

9575 KEELE STREET
MAPLE, ONTARIO

LANDSCAPE DETAILS

L3

Grand Pergola, 12' X 12' X 8' H ST12-A24H-12x12-8 - Grand Pergola

When the environment requires a structure of significant presence, our Grand Pergola is the perfect solution. Featuring heavy-duty, all-aluminum 6" x 6" columns, our Grand Pergola takes it to the next level. Shown here with horizontally-oriented 2" x 4" aluminum pergola, a variety of insect roof panel options are available to complete your shade structure. Professionally engineered, the Grand Pergola incorporates our proprietary Komnectr System to ensure that each design is as fluid as possible, while still meeting the requisite load and wind analysis. The Hauser Komnectr System, consisting of custom engineered Komnectr Blocks and stainless steel counter-sunk hardware, ensures that each beam and column connection is seamless, strong and virtually undetectable. Each column consists of built-in surface mount plates for a secure connection, while decorative covers provide the finishing element. The core frame has also been designed to accept a variety of lighting, charging and heat options. Custom sizes and shapes are also available.

Width: 144" (365.8 cm)
Depth: 144" (365.8 cm)
Height: 96" (243.8 cm)
Weight: 782.0 lb (355.0 kg)



ROOF: ALUMINUM SLAT - 2" X 4" - HORIZONTAL
FRAME: METAL FINISH - SILVER AGE, SMOOTHTEXT



HAUSER
SITE FURNITURE

sales@hausersite.com
800-268-7328
hausersite.com

1
L-4 GRAND PERGOLA
TOTAL UNIT ON SITE: 2

NTS

LiveRoof STANDARD SYSTEM

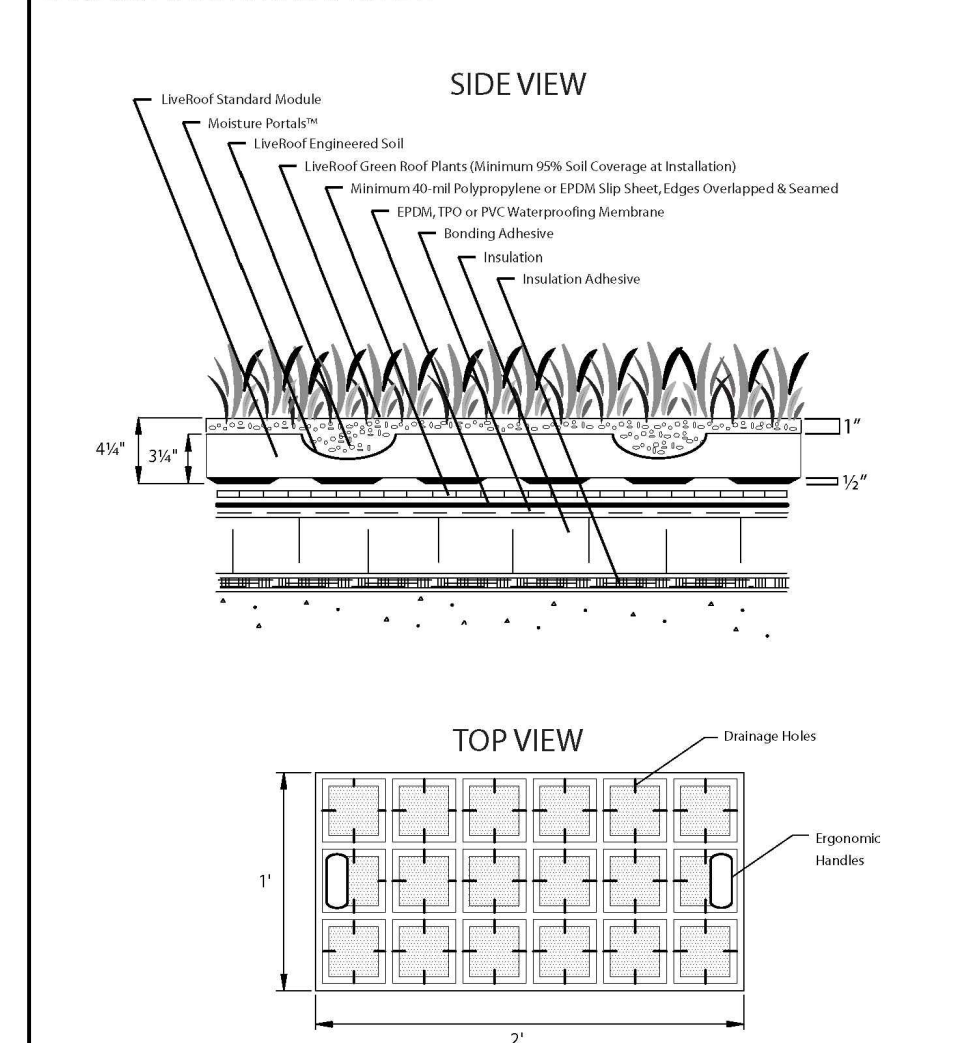


ILLUSTRATION NOT TO SCALE. CONSULT WITH PROFESSIONALS IN EXISTING LIVEROOF FOR BALLASTS. LIVEROOF DOES NOT ACCEPT RESPONSIBILITY FOR ENGINEERING BASED ON ILLUSTRATIONS. A QUALIFIED SOLE SOURCE CONTRACTOR SHALL BE CONSULTED TO DETERMINE APPROPRIATE UNDERGROUND AND ROOF DECK MATERIALS AND DURABLE DESIGN.

LiveRoof, LLC
P.O. Box 533
Spring Lake, MI 49456
(800) 875-1392
www.liveroof.com

LiveRoof

2
L-4 LIVEROOF GREEN ROOF ASSEMBLY
TYPICAL DETAIL

LiveRoof Edge

PERMALOC ALUMINUM EDGING, 13501 BARRY STREET HOLLAND, MI 49424
800.399.9600 PHONE (516) 399-9600 FAX (516) 399-9170 WWW.PERMALOC.COM

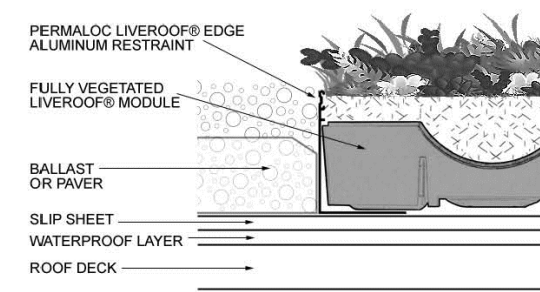
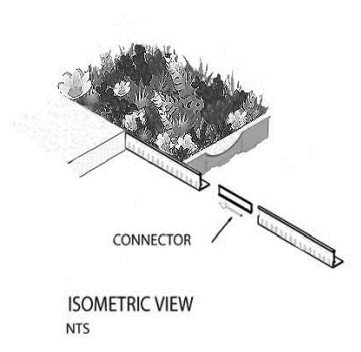
FOR USE WITH LiveRoof

ARCHITECT NOTE: CHECK OFF APPLICABLE SIZE & FINISH DESIRED
SIZE: ALL 2" (51MM) LENGTHS w/ 2.125" (53.97MM) THICK EXPOSED TOP LIP

□ 4.5" X 3" (114MM X 76.2MM) □ MF □ BL

FINISH LEGEND:
(MF) MILL FRESH NATURAL ALUMINUM
(BL) BLACK DURABLE ELECTROSTATICALLY APPLIED BASED ON FINISH MEETS AAMA 2603

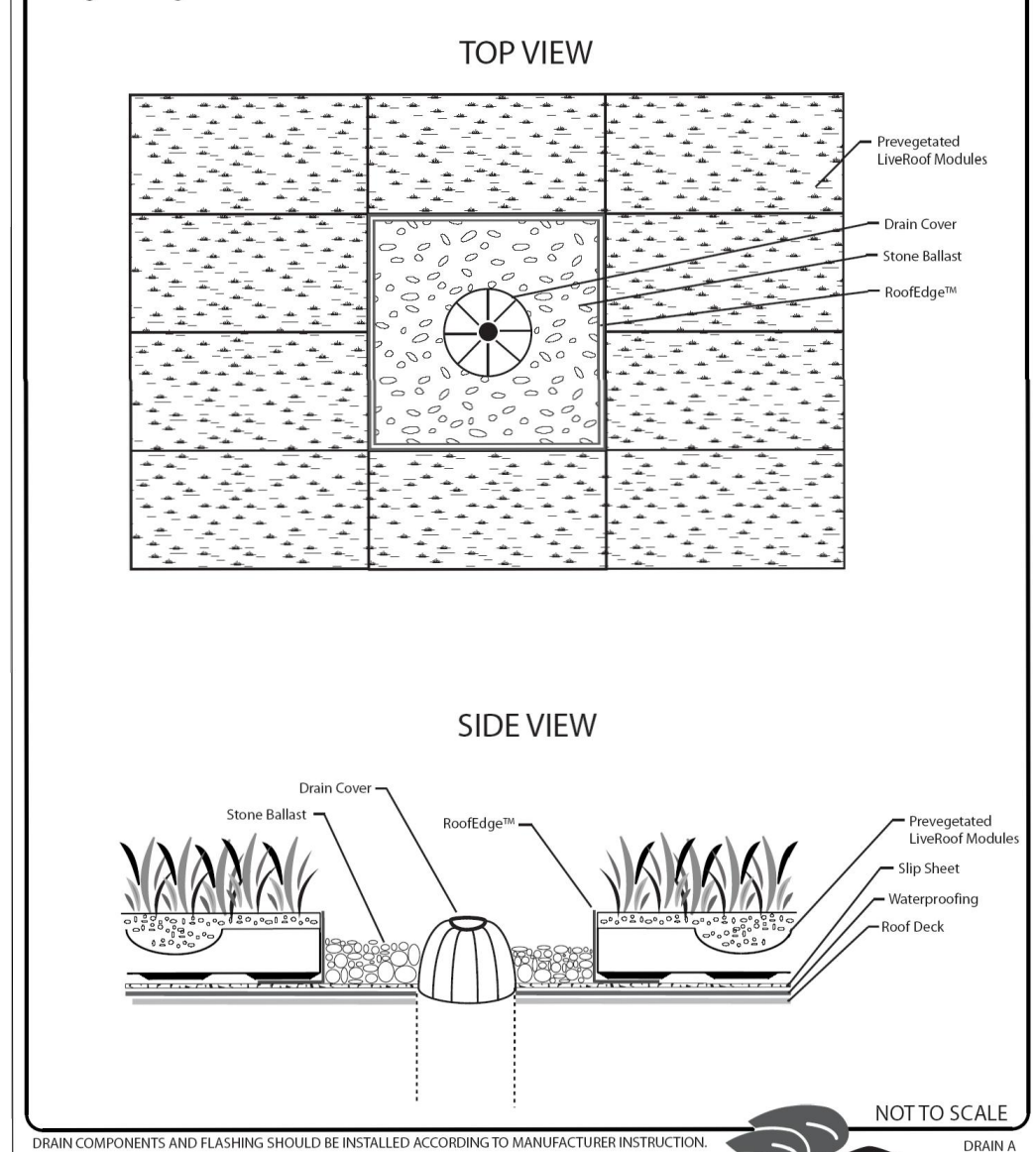
NOTES:
1. INSTALLATION PER MANUFACTURER'S INSTALLATION GUIDELINES.
2. IF 2" (51MM) SECTIONS CONNECTED WITH 4" (102MM) SLIDING CONNECTOR.
3. CONNECTOR NOTCH BASE ONLY FORM A CONTINUOUS CORNER.
4. WHEN CUTTING BASE, REMOVE ANY EDGES BY FILING.
5. PERMALOC LIVEROOF EDGE AS MANUFACTURED BY PERMALOC CORPORATION HOLLAND MI (800) 399-9600 (516) 399-9600
6. CONTRACTOR'S NOTE: FOR PRODUCT AND PURCHASING INFORMATION



EDGING FOR LIVEROOF® ADJACENT TO BALLAST OR PAVER
SCALE: 1/8" = 1'

NTS

DRAIN APPLICATION Using Roof Edge™ and Stone Ballast



DRAIN COMPONENTS AND FLASHING SHOULD BE INSTALLED ACCORDING TO MANUFACTURER INSTRUCTION.

LiveRoof, LLC
P.O. Box 533
Spring Lake, MI 49456
(800) 875-1392
www.liveroof.com

LiveRoof

3
L-4 DRAIN APPLICATION
TOTAL UNIT ON SITE: 2

NTS

PRESTIGE 665

DO NOT DISCARD

DANGER
IF YOU SMELL GAS:
• Shut off gas to the appliance.
• Extinguish any open flame.
• Open lid.
• If odor continues, keep away from the appliance and immediately call your gas supplier or fire department.

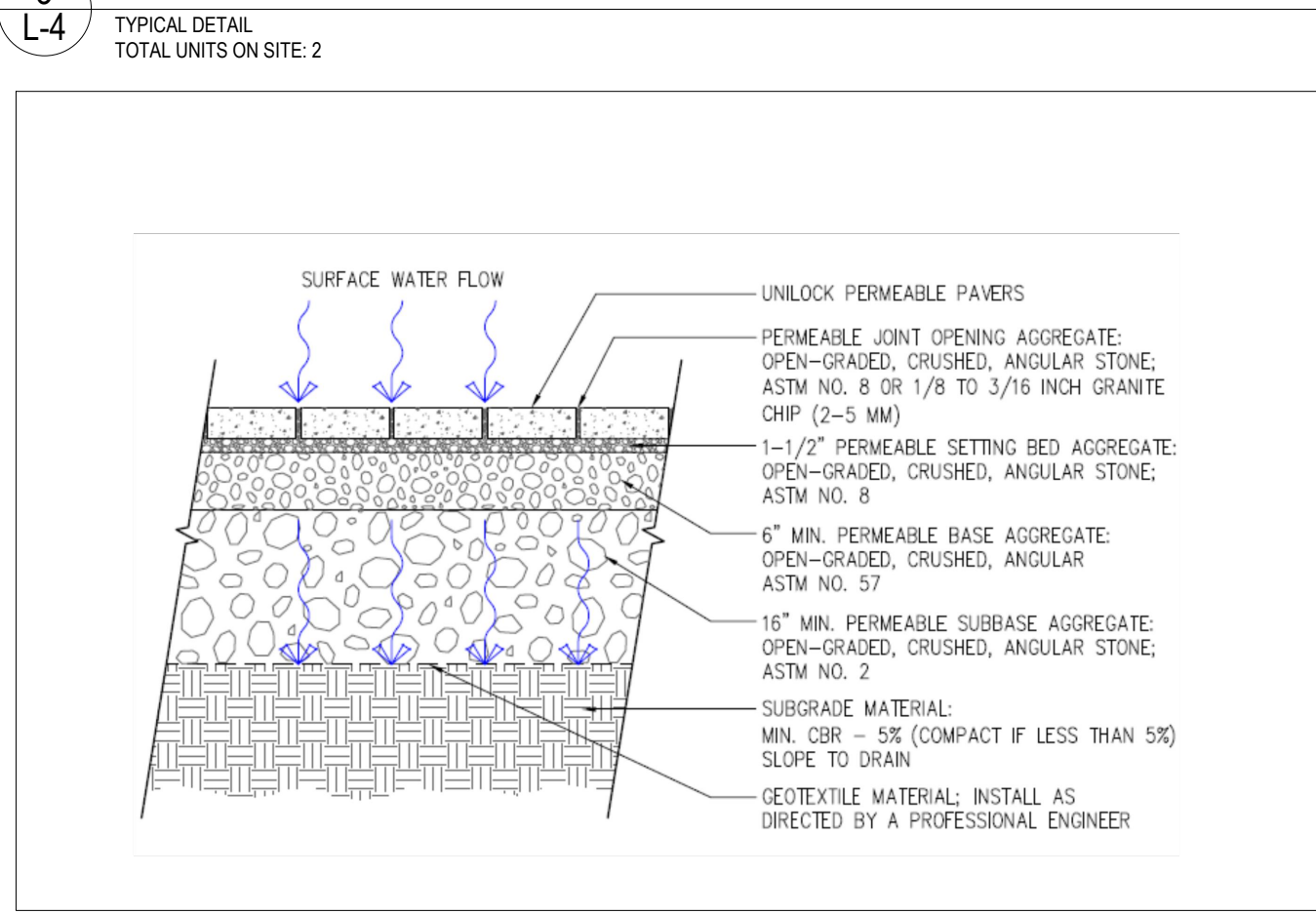
WARNING
Do not try to light this appliance without reading the "LIGHTING" instructions section of this manual.
Do not store or use gasoline or other flammable liquids or vapors in the vicinity of this or any other appliance. An L.P. cylinder not connected for use must not be stored in the vicinity of this or any other appliance. If the information in these instructions is not followed exactly, a fire or explosion may result, causing property damage, personal injury or death.

Adults and especially children should be alerted to the hazards of high surface temperatures. Young children should be supervised near the gas grill.

Notice to Installer: Leave these instructions with the grill owner for future reference.

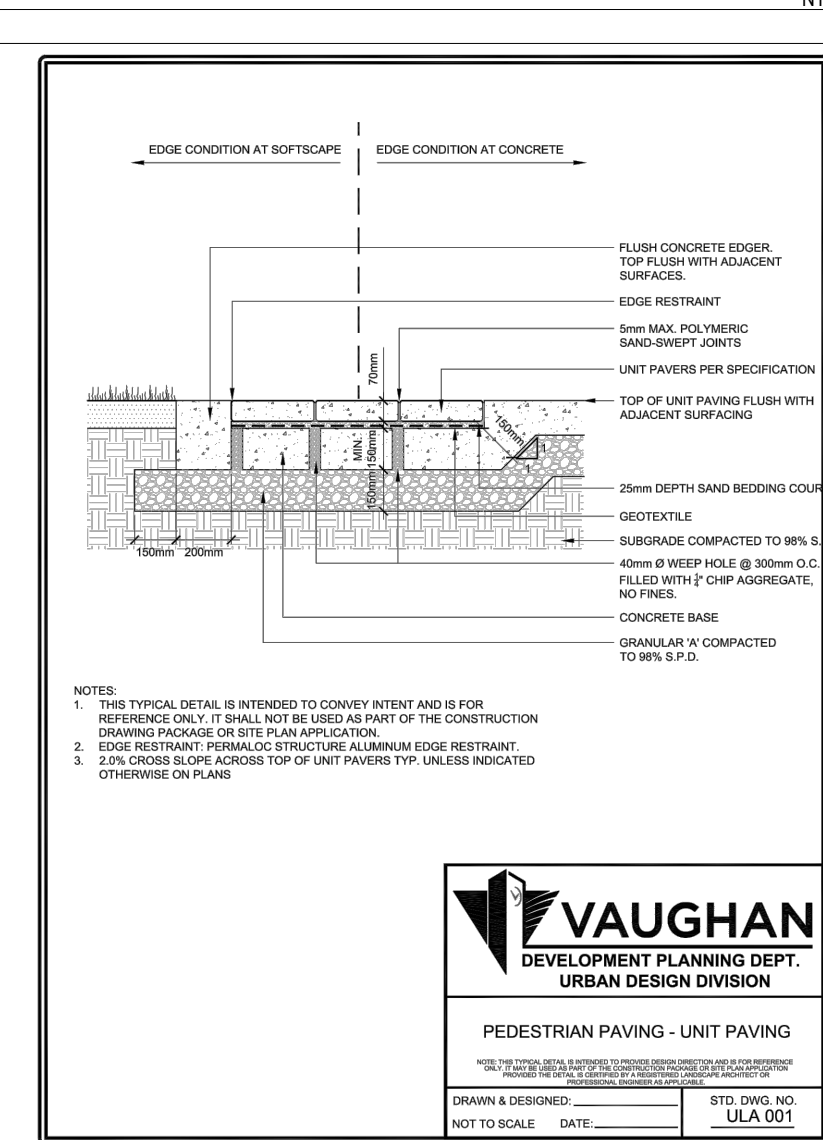
3
L-4 PRESTIGE 665 NATURAL GAS BBQ
TYPICAL DETAIL

NTS



5
L-4 PERMEABLE PAVING
TYPICAL DETAIL

NTS



6
L-4 UNIT PAVING
CITY OF VAUGHAN STANDARD DETAIL

NTS

ON SLAB

FLAGSTONE

GLASSIC TERRAZ SLAB / 45MM / 1.8"

BUNDLE OVERVIEW

UNIT
23.0 x 29.2 x 1.75 in
608 x 684 x 47 mm
Impresso - 21

NOTES
For installation see only Naturally Inspired flagstone finish. Classic drab does not include spatter bars. The use of a plate larger is not permitted.
*Sold in full bundles only.
Plate larger not permitted.

BUNDLE SPECIFICATIONS

	IMPERIAL	METRIC
Coverage	19.17 sq	2.14 sq
Weight	7183 lbs	3258 kg
Area	28	1.1
Coverage per unit	3.97 sq	0.44 sq
Local coverage	48.21 sq	12 sq
Local coverage per unit	1.97 sq	0.24 sq

COLOURS
Low
Lemon Blend

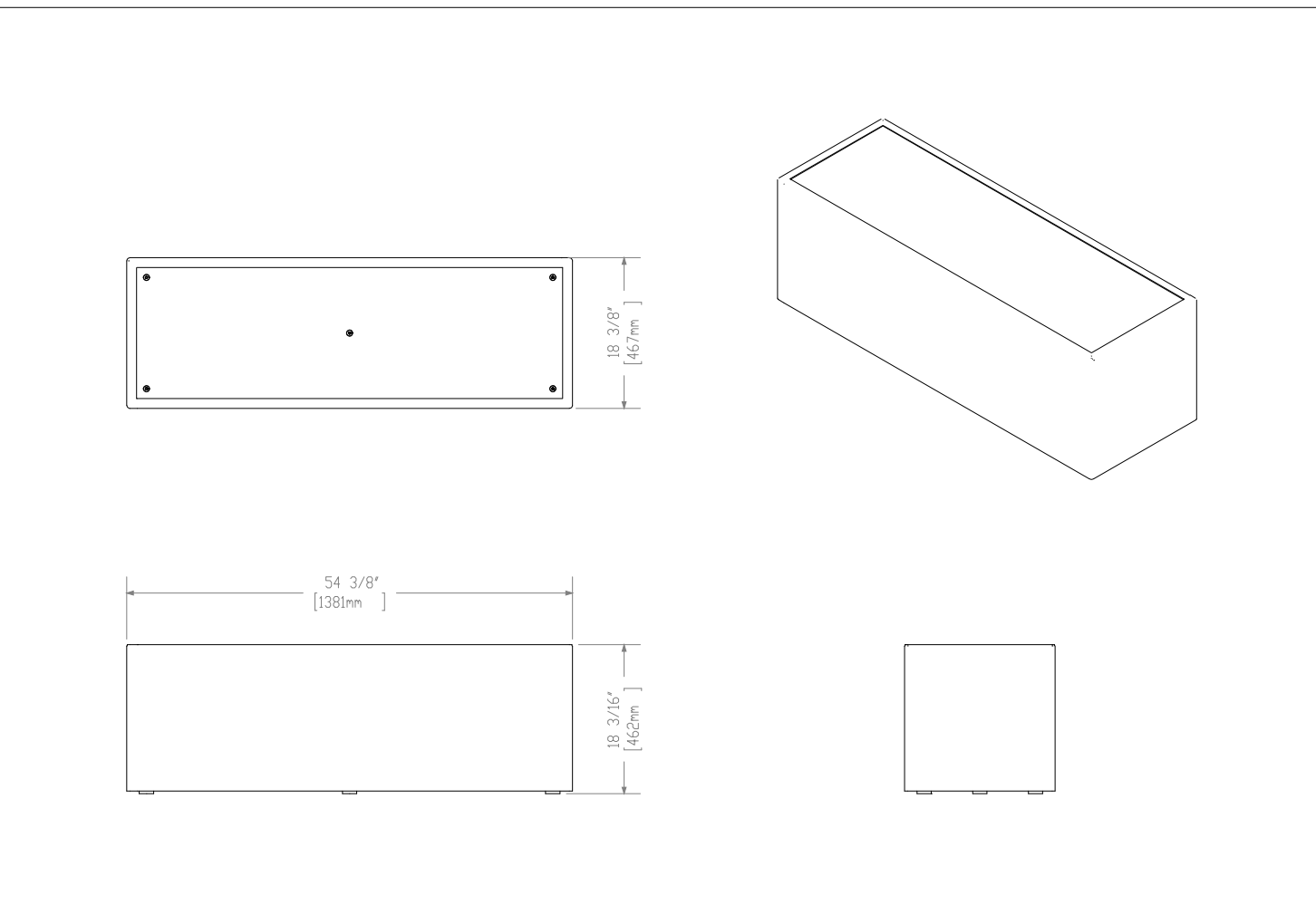
PATTERNS

4
L-4 TERRACE PAVING
TYPICAL DETAIL

NTS

4
L-4 TERRACE PAVING
TYPICAL DETAIL

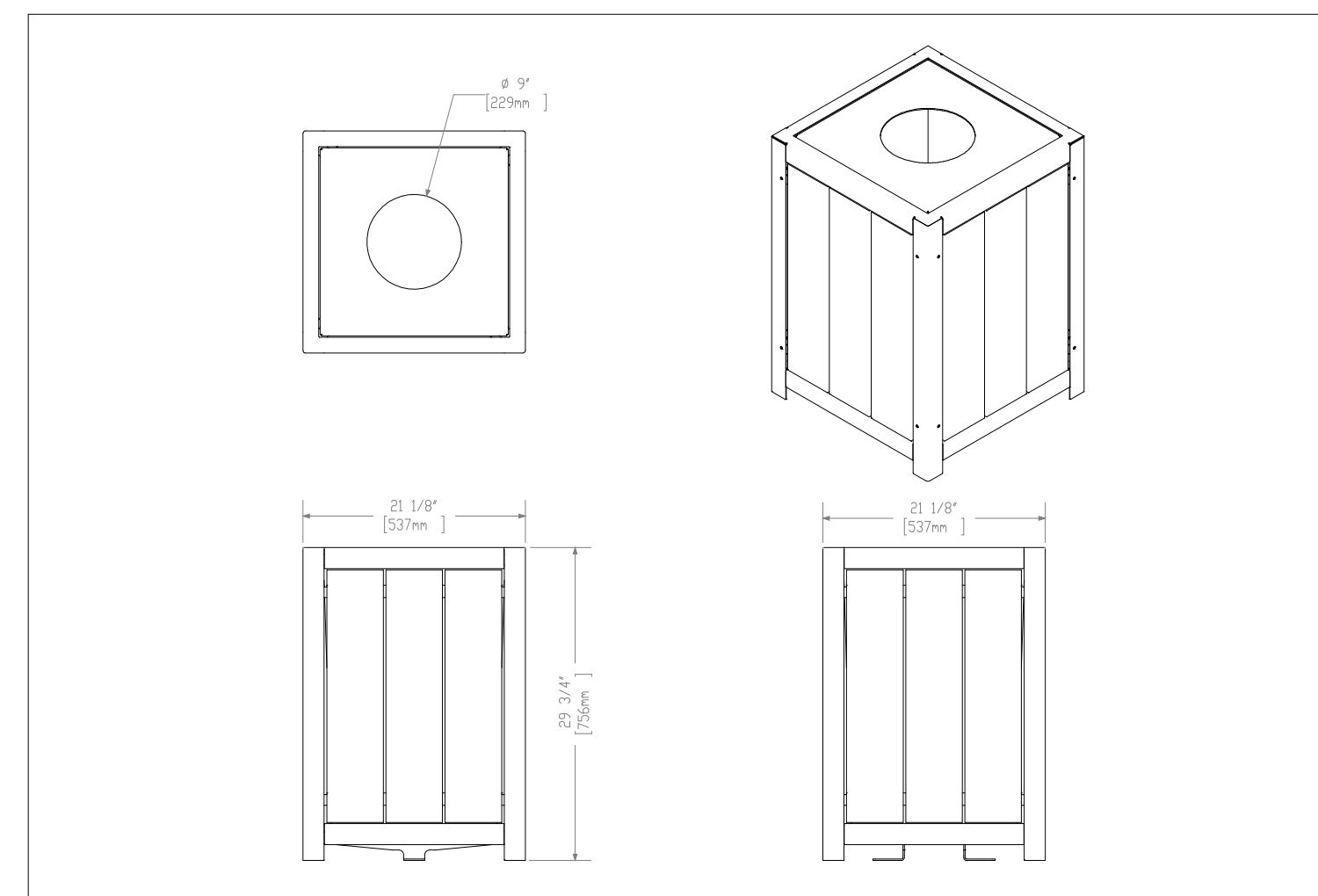
NTS



7
L-4 MOVABLE PLANTER
TYPICAL DETAIL

NTS

7
L-4 MOVABLE PLANTER
TOTAL UNIT ON SITE: 10



8
L-4 WASTE RECEPTACLE
TYPICAL DETAIL

NTS

8
L-4 WASTE RECEPTACLE
TOTAL UNIT ON SITE: 2

GENERAL NOTES

- Do not scale the drawings. All dimensions are in millimetres unless noted otherwise.
- This drawing is to be read in conjunction with the overall master plan and engineering drawings and site plans.
- The contractor shall check and verify all existing and proposed grading and conditions on the project and immediately report any discrepancies to the consultant before proceeding with any work.
- The contractor is to be aware of all existing and proposed services and utilities. The contractor is responsible for having all underground services and utility lines staked by each agency having jurisdiction prior to commencing work.
- This drawing is to be used for development approval only. For layout of all work refer to construction drawings.
- Plant quantities indicated on the plan supercede the quantities from the plant list (report any discrepancies to the landscape architect).
- Do not leave any holes open overnight.
- Keep area outside construction zone clean and useable by others at all times. Contractor shall thoroughly clean areas surrounding the construction zone at the end of each work day.
- Contractor to make good any and all damages outside of the development area that may occur as a result of construction at no extra cost.
- This drawing is Copyright MHBC 2022.

REVISION NO.	DATE	ISSUED / REVISION	BY
5.	DECEMBER 21, 2022	ISSUED FOR RE-SUBMISSION	HH
4.	AUGUST 25, 2022	ISSUED FOR RE-SUBMISSION	HH
3.	APRIL 26, 2022	ISSUED FOR RE-SUBMISSION	HH
2.	NOVEMBER 23, 2021	ISSUED FOR RE-SUBMISSION	HH
1.	NOVEMBER 10, 2020	ISSUED FOR SUBMISSION	HH

MHBC
PLANNING
URBAN DESIGN
& LANDSCAPE
ARCHITECTURE

230-7050 WESTON ROAD WOODBRIDGE, ON, L4L 8G7 | P: 905 761 5588 F: 905 761 5589 | WWW.MHBCPLAN.COM

STAMP

**ISSUED FOR SPA ONLY
NOT FOR CONSTRUCTION**

All drawings and specifications are instruments of service and will remain the property of MHBC Planning and must be returned at the completion of the work. This drawing shall not be used for construction purposes unless the drawings are marked "Issued for Construction" and the professional seal is signed and dated by the landscape architect.

DATE	AUGUST 2020
DRAWN BY	H.H.
FILE NO.	19270A
CHECKED BY	N.M.
CITY FILE NO.	DA.20.058 + 2.20.035
REGION FILE NO.	SP.20.V.0266

PROJECT

9575 KEELE STREET
MAPLE, ONTARIO

FILE NAME

LANDSCAPE DETAILS

DWG NO.

L4

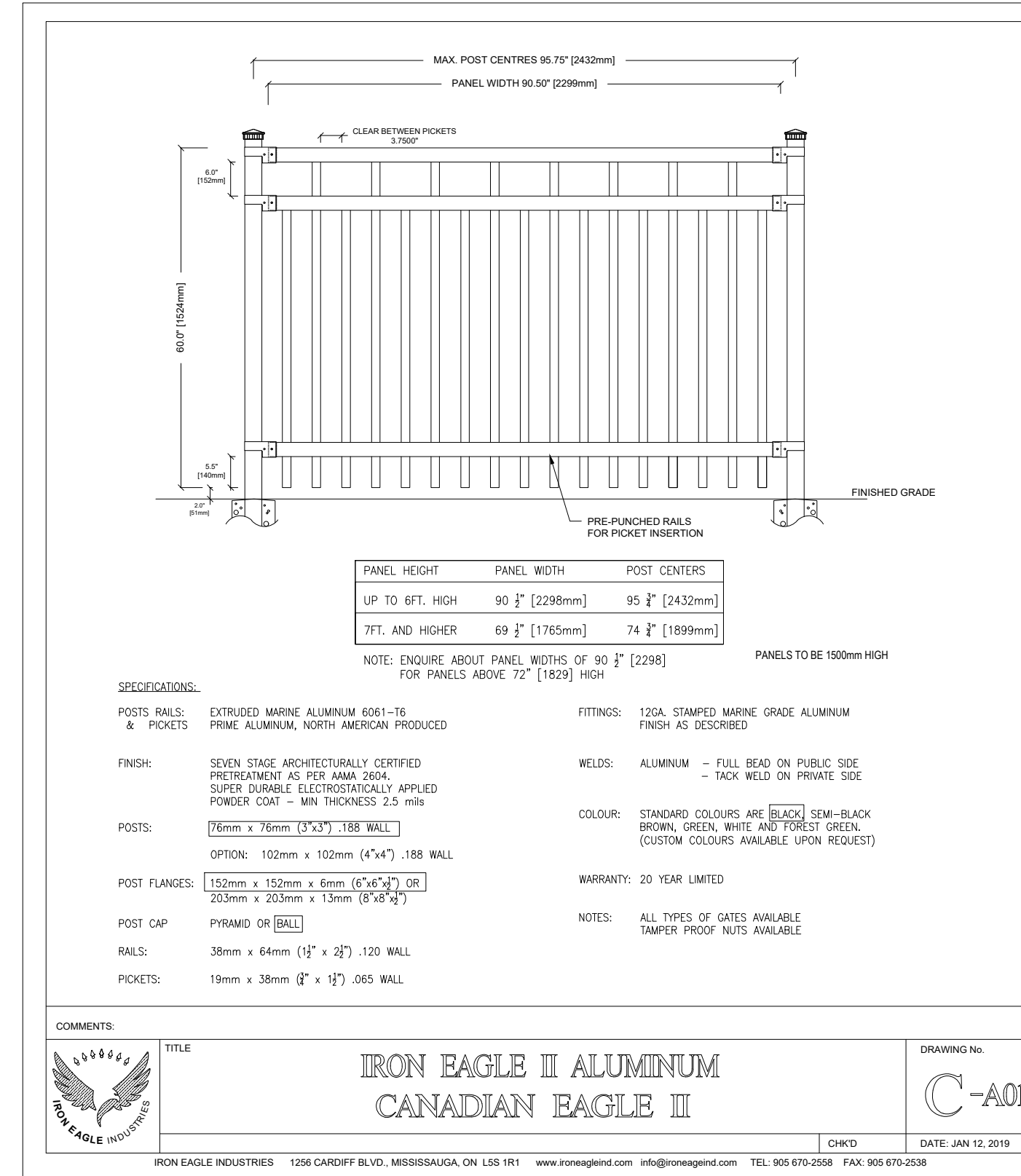


1 OUTDOOR SOFA AND COFFEE TABLE

L-5 SOFA: CABANA COAST - KENSINGTON
TOTAL UNIT ON SITE: 6
COFFEE TABLE: CABANA COAST - BELVEDERE 48X26"
TOTAL UNIT ON SITE: 3



NTS



2 1.2 M HIGH ORNAMENTAL METAL FENCE

L-5 TYPICAL DETAIL

NTS



3 OUTDOOR DINING TABLE AND CHAIRS

L-5 TABLE: CABANA COAST - SKYE 84X42"
TOTAL UNIT ON SITE: 4
CHAIR: CABANA COAST - SKYE
TOTAL UNIT ON SITE: 24



NTS

GENERAL NOTES

- Do not scale the drawings. All dimensions are in millimetres unless noted otherwise.
- This drawing is to be read in conjunction with the overall master plan and engineering drawings and site plans.
- The contractor shall check and verify all existing and proposed grading and conditions on the project and immediately report any discrepancies to the consultant before proceeding with any work.
- The contractor is to be aware of all existing and proposed services and utilities. The contractor is responsible for having all underground services and utility lines staked by each agency having jurisdiction prior to commencing work.
- This drawing is to be used for development approval only. For layout of all work refer to construction drawings.
- Plant quantities indicated on the plan supercede the quantities from the plant list (report any discrepancies to the landscape architect).
- Do not leave any holes open overnight.
- Keep area outside construction zone clean and useable by others at all times. Contractor shall thoroughly clean areas surrounding the construction zone at the end of each work day.
- Contractor to make good any and all damages outside of the development area that may occur as a result of construction at no extra cost.
- This drawing is Copyright MHBC 2022.

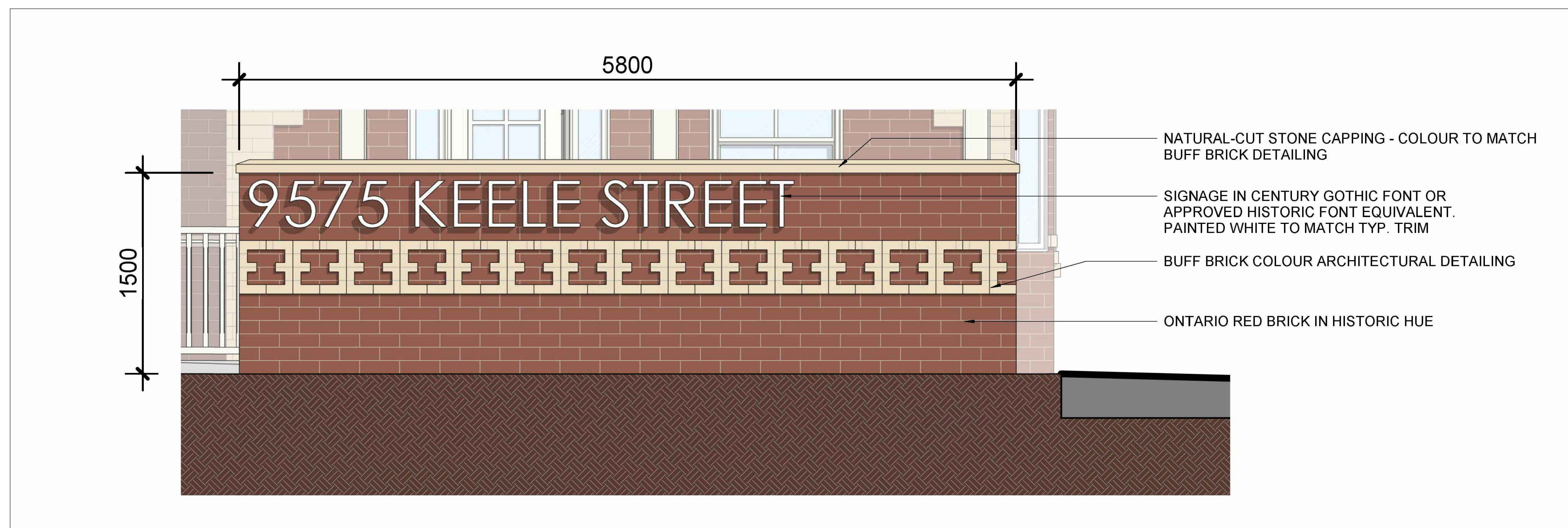
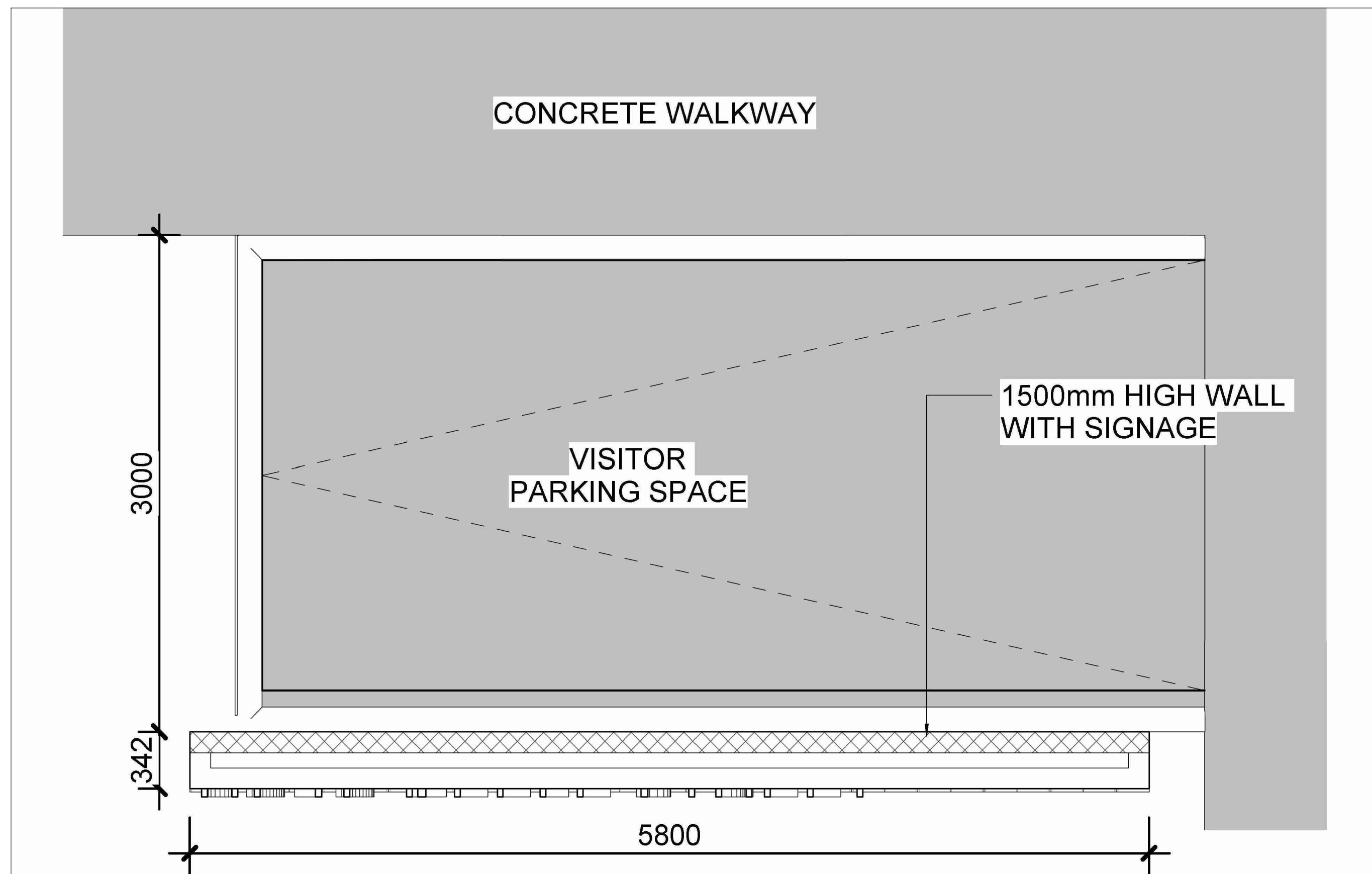
REVISION NO.	DATE	ISSUED / REVISION	BY
5.	DECEMBER 21, 2022	ISSUED FOR RE-SUBMISSION	HH
4.	AUGUST 25, 2022	ISSUED FOR RE-SUBMISSION	HH
3.	APRIL 26, 2022	ISSUED FOR RE-SUBMISSION	HH
2.	NOVEMBER 23, 2021	ISSUED FOR RE-SUBMISSION	HH
1.	NOVEMBER 10, 2020	ISSUED FOR SUBMISSION	HH

MHBC PLANNING URBAN DESIGN & LANDSCAPE ARCHITECTURE
230-7050 WESTON ROAD WOODBRIDGE, ON, L4L 8G7 | P: 905 761 5588 F: 905 761 5589 | WWW.MHBCPLAN.COM

STAMP	DATE	AUGUST 2020
<p>ISSUED FOR SPA ONLY NOT FOR CONSTRUCTION</p> <p>All drawings and specifications are instruments of service and will remain the property of MHBC Planning and must be returned at the completion of the work. This drawing shall not be used for construction purposes unless the drawings are marked "Issued for Construction" and the professional seal is signed and dated by the landscape architect.</p>	DRAWN BY	H.H.
	FILE NO.	19270A
	CHECKED BY	N.M.
	CITY FILE NO.	DA.20.058 + Z.20.035
	REGION FILE NO.	SP.20.V.0266

PROJECT
9575 KEELE STREET
MAPLE, ONTARIO

FILE NAME	DWG NO.
LANDSCAPE DETAILS	L5



1 SIGNAGE WALL
L-6 TYPICAL DETAIL

NTS

GENERAL NOTES

1. Do not scale the drawings. All dimensions are in millimetres unless noted otherwise.
2. This drawing is to be read in conjunction with the overall master plan and engineering drawings and site plans.
3. The contractor shall check and verify all existing and proposed grading and conditions on the project and immediately report any discrepancies to the consultant before proceeding with any work.
4. The contractor is to be aware of all existing and proposed services and utilities. The contractor is responsible for having all underground services and utility lines staked by each agency having jurisdiction prior to commencing work.
5. This drawing is to be used for development approval only. For layout of all work refer to construction drawings.
6. Plant quantities indicated on the plan supercede the quantities from the plant list (report any discrepancies to the landscape architect).
7. Do not leave any holes open overnight.
8. Keep area outside construction zone clean and useable by others at all times. Contractor shall thoroughly clean areas surrounding the construction zone at the end of each work day.
9. Contractor to make good any and all damages outside of the development area that may occur as a result of construction at no extra cost.
10. This drawing is Copyright MHBC 2022.

REVISION NO.	DATE	ISSUED / REVISION	BY
5.	DECEMBER 21, 2022	ISSUED FOR RE-SUBMISSION	HH
4.	AUGUST 25, 2022	ISSUED FOR RE-SUBMISSION	HH
3.	APRIL 26, 2022	ISSUED FOR RE-SUBMISSION	HH
2.	NOVEMBER 23, 2021	ISSUED FOR RE-SUBMISSION	HH
1.	NOVEMBER 10, 2020	ISSUED FOR SUBMISSION	HH

MHBC PLANNING URBAN DESIGN & LANDSCAPE ARCHITECTURE

230-7050 WESTON ROAD WOODBRIDGE, ON, L4L 8G7 | P: 905.761.5588 F: 905.761.5589 | WWW.MHBCPLAN.COM

<p>ISSUED FOR SPA ONLY NOT FOR CONSTRUCTION</p> <p><small>All drawings and specifications are instruments of service and will remain the property of MHBC Planning and must be returned at the completion of the work. This drawing shall not be used for construction purposes unless the drawings are marked 'Issued for Construction' and the professional seal is signed and dated by the landscape architect.</small></p>	DATE	AUGUST 2020
	DRAWN BY	H.H.
	FILE NO.	19270A
	CHECKED BY	N.M.
	CITY FILE NO.	DA.20.058 + Z.20.035
	REGION FILE NO.	SP.20.V.0266

PROJECT	9575 KEELE STREET MAPLE, ONTARIO
---------	-------------------------------------

FILE NAME	LANDSCAPE DETAILS	DWG NO.	L6
-----------	-------------------	---------	----