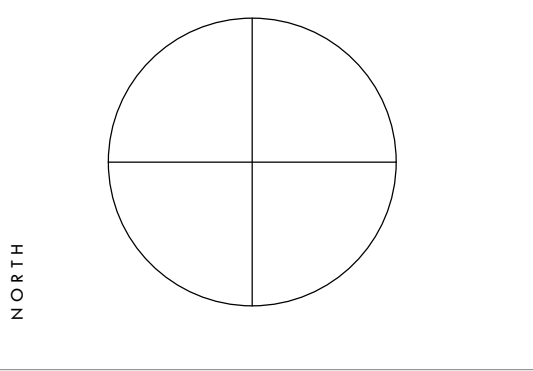


Proposed Ground Floor
 1:50

Copyright of this drawing and design is reserved by the Designer. The drawing and design are the property of the Designer and are not to be reproduced, stored in a retrieval system, or transmitted in any form or by any means, electronic, mechanical, photocopying, recording, or by any information storage and retrieval system, without the prior written permission of the Designer. The Designer shall not be held responsible for any errors or omissions in this drawing. The Designer shall not be held responsible for any damage or loss of any kind, including but not limited to, consequential or incidental damages, arising out of the use of this drawing. The Designer shall not be held responsible for any delay or interruption of any kind, including but not limited to, consequential or incidental damages, arising out of the use of this drawing. The Designer shall not be held responsible for any cost or expense of any kind, including but not limited to, consequential or incidental damages, arising out of the use of this drawing. The Designer shall not be held responsible for any liability of any kind, including but not limited to, consequential or incidental damages, arising out of the use of this drawing. The Designer shall not be held responsible for any action of any kind, including but not limited to, consequential or incidental damages, arising out of the use of this drawing. The Designer shall not be held responsible for any claim of any kind, including but not limited to, consequential or incidental damages, arising out of the use of this drawing. The Designer shall not be held responsible for any suit of any kind, including but not limited to, consequential or incidental damages, arising out of the use of this drawing. The Designer shall not be held responsible for any award of any kind, including but not limited to, consequential or incidental damages, arising out of the use of this drawing. The Designer shall not be held responsible for any judgment of any kind, including but not limited to, consequential or incidental damages, arising out of the use of this drawing. The Designer shall not be held responsible for any decree of any kind, including but not limited to, consequential or incidental damages, arising out of the use of this drawing. The Designer shall not be held responsible for any order of any kind, including but not limited to, consequential or incidental damages, arising out of the use of this drawing. The Designer shall not be held responsible for any writ of any kind, including but not limited to, consequential or incidental damages, arising out of the use of this drawing. The Designer shall not be held responsible for any injunction of any kind, including but not limited to, consequential or incidental damages, arising out of the use of this drawing. The Designer shall not be held responsible for any restraining order of any kind, including but not limited to, consequential or incidental damages, arising out of the use of this drawing. The Designer shall not be held responsible for any preliminary injunction of any kind, including but not limited to, consequential or incidental damages, arising out of the use of this drawing. The Designer shall not be held responsible for any permanent injunction of any kind, including but not limited to, consequential or incidental damages, arising out of the use of this drawing. The Designer shall not be held responsible for any judgment of any kind, including but not limited to, consequential or incidental damages, arising out of the use of this drawing. The Designer shall not be held responsible for any award of any kind, including but not limited to, consequential or incidental damages, arising out of the use of this drawing. The Designer shall not be held responsible for any suit of any kind, including but not limited to, consequential or incidental damages, arising out of the use of this drawing. The Designer shall not be held responsible for any claim of any kind, including but not limited to, consequential or incidental damages, arising out of the use of this drawing. The Designer shall not be held responsible for any action of any kind, including but not limited to, consequential or incidental damages, arising out of the use of this drawing. The Designer shall not be held responsible for any liability of any kind, including but not limited to, consequential or incidental damages, arising out of the use of this drawing. The Designer shall not be held responsible for any cost or expense of any kind, including but not limited to, consequential or incidental damages, arising out of the use of this drawing. The Designer shall not be held responsible for any delay or interruption of any kind, including but not limited to, consequential or incidental damages, arising out of the use of this drawing. The Designer shall not be held responsible for any damage or loss of any kind, including but not limited to, consequential or incidental damages, arising out of the use of this drawing. The Designer shall not be held responsible for any errors or omissions in this drawing. The Designer shall not be held responsible for any reproduction, storage, or transmission of this drawing in any form or by any means, electronic, mechanical, photocopying, recording, or by any information storage and retrieval system, without the prior written permission of the Designer.



STAMP

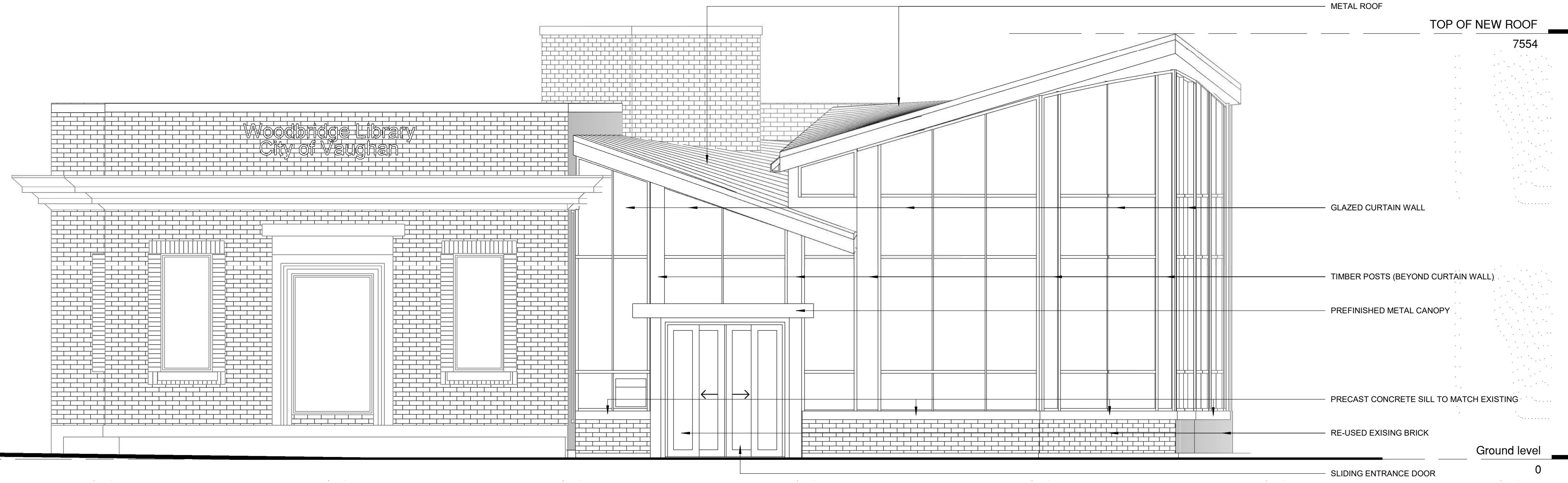
NO.	ISSUED FOR	DATE
1	ISSUED FOR HERITAGE PERMIT	07/04/2023
	DESCRIPTION	DATE

PROPOSED GROUND FLOOR PLAN

WOODBRIDGE LIBRARY

150 WOODBRIDGE AVENUE
 VAUGHAN, ON

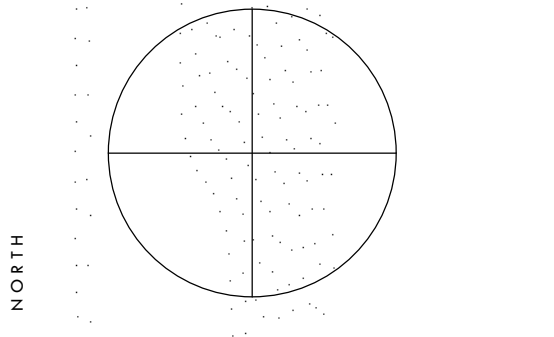
SCALE	1:50
DATE	2/6/2023 6:07:56 PM
DRAWN	Author
CHECKED	Checker
PROJECT NUMBER	22077
SHEET	



PROPOSED FRONT ELEVATION (SOUTH)

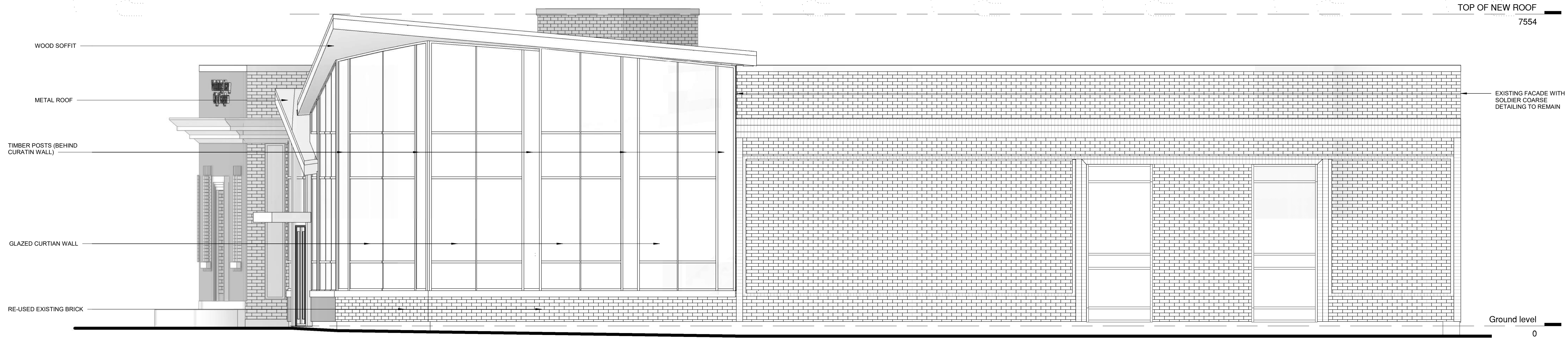
1 : 50

Copyright of this drawing and design is reserved by the Designer. The drawing and design are to be used for the project only and are not to be reproduced or used in any other project without the written permission of the Designer. The Designer shall not be held responsible for any errors or omissions in this drawing. The Designer shall not be held responsible for any delays or stoppages in the project caused by the client or any other party. The Designer shall not be held responsible for any changes or modifications to the drawing after it has been approved by the client. The Designer shall not be held responsible for any construction or installation of the project. The Designer shall not be held responsible for any damage or injury to the project or any other party. The Designer shall not be held responsible for any other matter not specifically mentioned in this drawing.



STAMP

No.	ISSUED FOR	DATE
1	ISSUED FOR PERMIT REVIEW	07/04/2023



PROPOSED SIDE ELEVATION (EAST)

1 : 50

PROPOSED ELEVATIONS

WOODBRIDGE LIBRARY

150 WOODBRIDGE AVENUE
VAUGHAN, ON

SCALE	1 : 50
DATE	2/6/2023 6:08:02 PM
DRAWN	Author
CHECKED	Checker
PROJECT NUMBER	22077
SHEET	

A4.3

