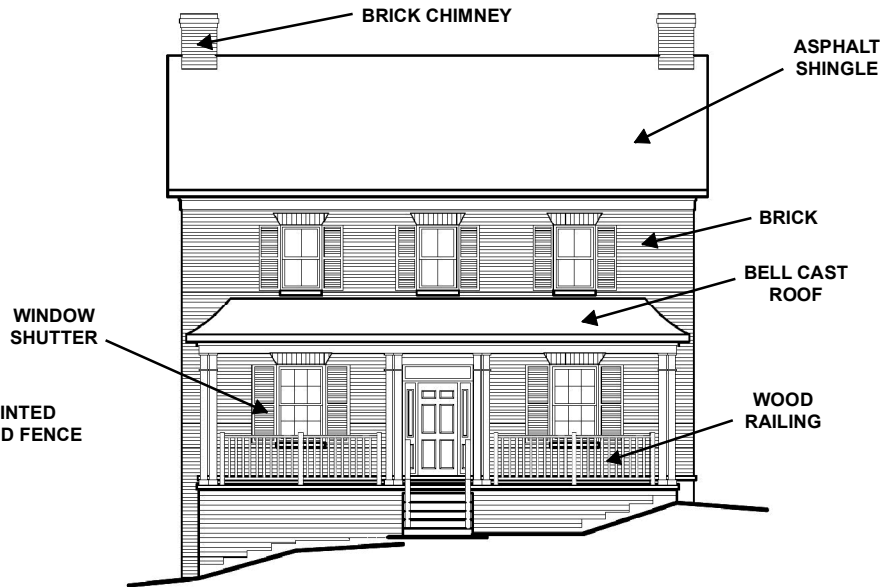
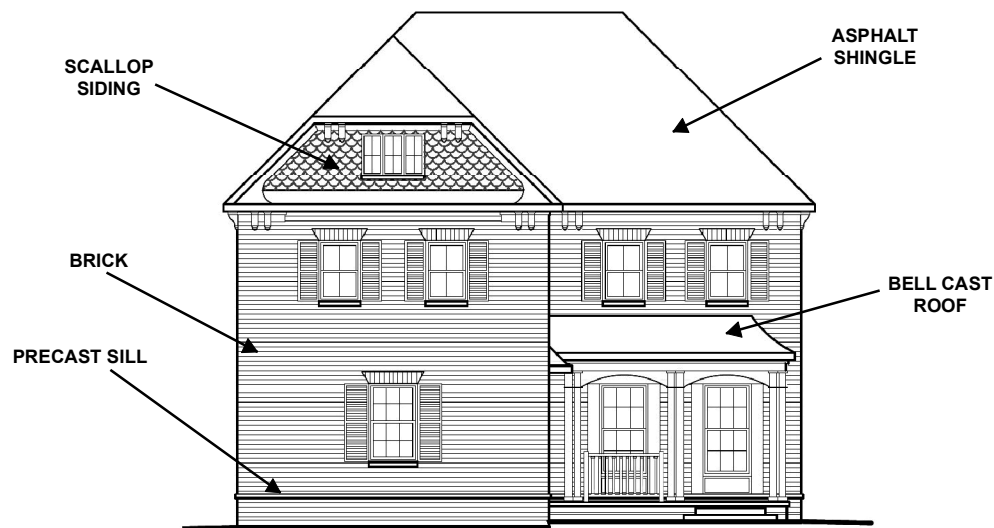


NORTH (FRONT) ELEVATION - UNIT 6



NORTH (FRONT) ELEVATION - UNIT 7



NORTH (FRONT) ELEVATION - UNIT 8

Not to Scale

Building Elevations Facing Stegman's Mill Road (Units 6, 7 and 8)

LOCATION: Part of Lot 24, Concession 8;
357, 365, and 375 Stegman's Mill Road

APPLICANT: Kleinburg Village Development Corp.



Attachment

FILE: Z.21.020
RELATED FILES: DA.21.023,
19T-21V005, 19CDM-21V003
DATE: February 2, 2022

9