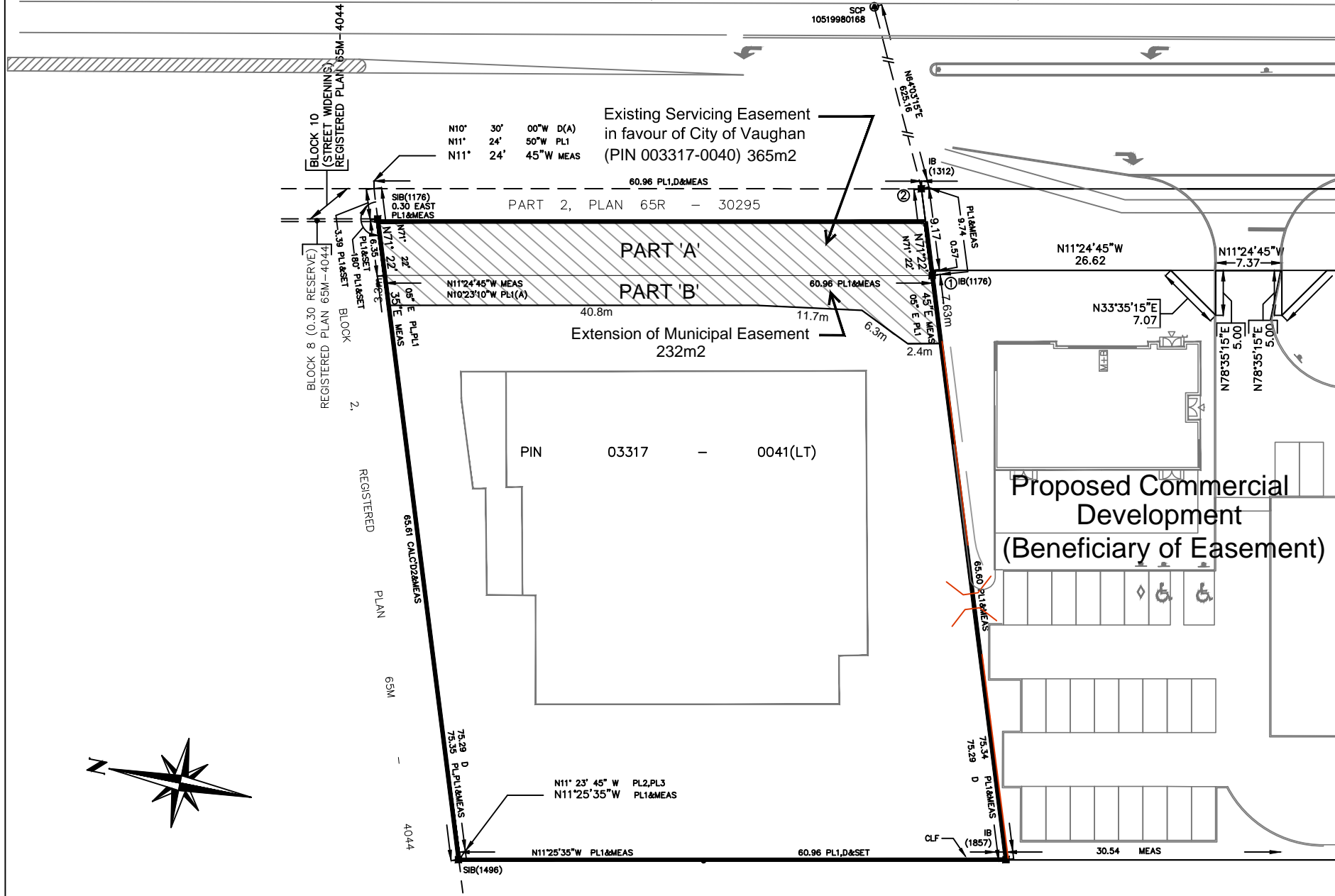


THE KING'S HIGHWAY No. 27
(ROAD ALLOWANCE BETWEEN CONCESSIONS 8 AND 9)



THE KING'S HIGHWAY No. 27
 (ROAD ALLOWANCE BETWEEN CONCESSIONS 8 AND 9)

SCP
 10519980168

Existing Servicing Easement
 in favour of City of Vaughan
 (PIN 003317-0040) 365m²

N10° 30' 00"W D(A)
 N11° 24' 50"W PL1
 N11° 24' 45"W MEAS

60.96 PL1,D&MEAS

PART 2, PLAN 65R - 30295

SIB(1176)
 0.30 EAST
 PL1&MEAS

PART 'A'

PART 'B'

N11°24'45"W MEAS
 N10°23'10"W PL1(A)

40.8m

Extension of Municipal Easement
 232m²

60.96 PL1&MEAS

11.7m

6.3m

2.4m

7.63m

N64°03'15"E
 625.16

IB
 (1312)

PL1&MEAS
 9.74

N71°22'
 9.17

IB(1176)

N71°22'
 0.57

45"E MEAS
 05" E PL1

3.39 PL1&SET
 6.35 PL1&SET
 180° PL1&SET
 N71° 22'
 N71° 22'
 05" E PL,PL1
 35"E MEAS

PIN 03317 - 0041(LT)

