

Non-Core Asset Management Plans

AECOM

Communication : C 1
Committee of the Whole (Working Session)
December 7, 2022
Agenda Item # 1

City of Vaughan

December 7th, 2022

VAUGHAN CITY HALL

Christiaan Lombard, MBA P. Eng IAM Cert.: Asset Management Leader, Americas Water

Donghui Lu, Ph. D, IAM Cert.: Asset Management Consultant

Photo: City Hall, City of Vaughan

Agenda

1. Ontario Regulation 588 / 17
2. What is Asset Management + Project Methodology?
3. The City's Non-Core Asset Portfolio
4. Asset Management Plan Components
 - i. What is the state of infrastructure?
 - ii. What are the Levels of Service (LoS)?
 - iii. What are the asset lifecycle strategies?
 - iv. What are the funding needs?
 - v. How can AM planning be improved?
5. Q&A

Ontario Regulation 588 / 17

Deadline Date	Ontario Regulation 588 / 17 Regulatory Requirements & Dates
July 1 st 2019	All Municipalities are required to prepare their first Strategic Asset Management Policy
July 1 st 2022	All municipalities are required to have an Asset Management Plan for its entire core municipal infrastructure Note: Core Asset Management Plans were endorsed by Council last year and are currently publicly accessible on the City website (as per regulation)
July 1 st 2024	All municipalities are required to have an asset management plan for infrastructure assets not included under their core assets
July 1 st 2025	All Asset Management Plans must include information about the levels of service that the municipality proposes to provide, the activities required to meet those levels of service, and a strategy to fund activities



Photo: Thornhill Green Park Waterplay

What is Asset Management?

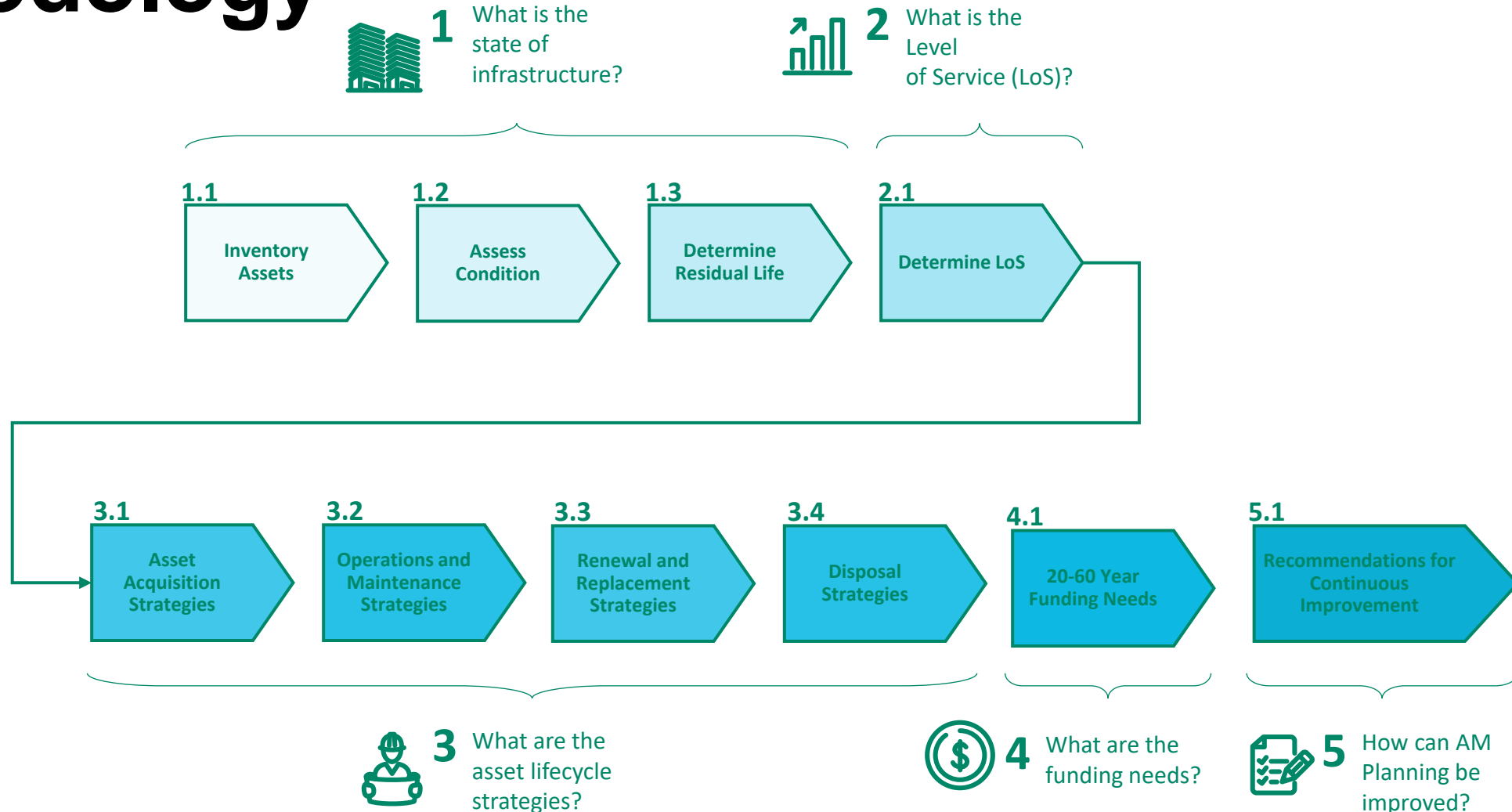
Asset Management is an **integrated process** that combines the **skills, expertise, and activities of people** with **information** about a community's **physical assets** and **finances** so that **informed decisions** are made to support **sustainable service delivery**



Framework for Sustainable Infrastructure

Source: Adapted from [Asset Management for Sustainable Service Delivery: A BC Framework](#)

Asset Management Methodology



The City's Non-Core Asset Portfolio

- Facilities
- Parks
- Forestry
- Active Transportation
- Traffic Control & Streetlights
- Fleet
- Fire & Rescue



Photo: Tree Planting

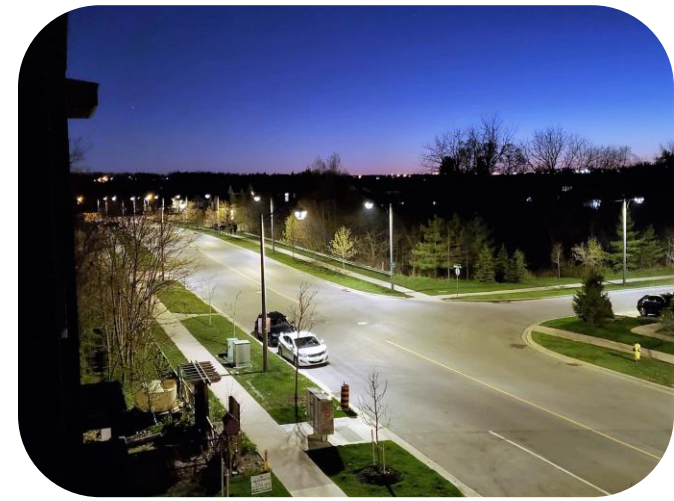


Photo: LED Streetlight Retrofit

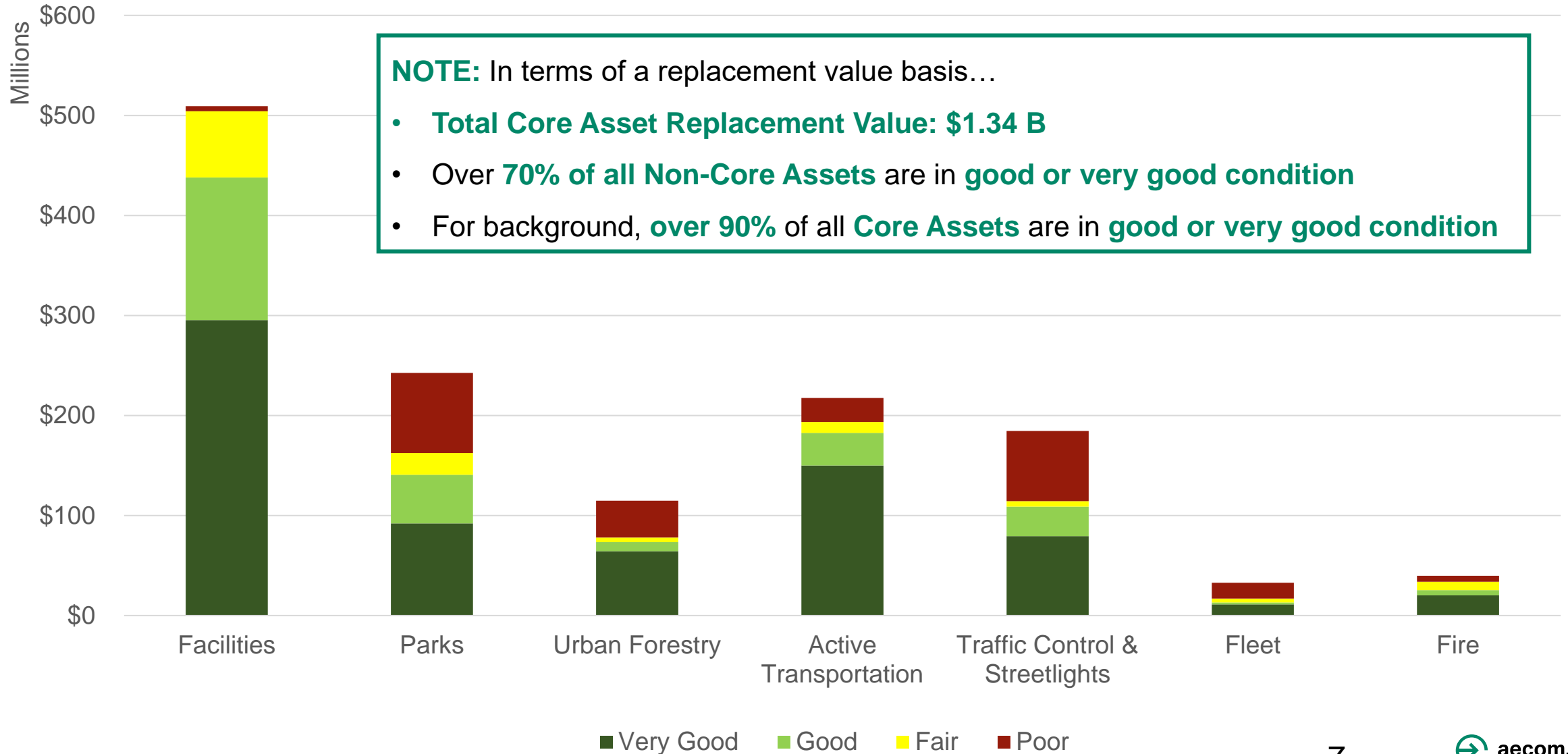


Photo: North Maple Regional Park (NMRP) Pavilion and Soccer Fields

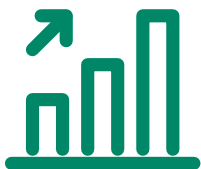


Photo: Fire Hall 7-9 & Fire Trucks

1. What is the State of Infrastructure?



2. What is Level of Service (LoS)?

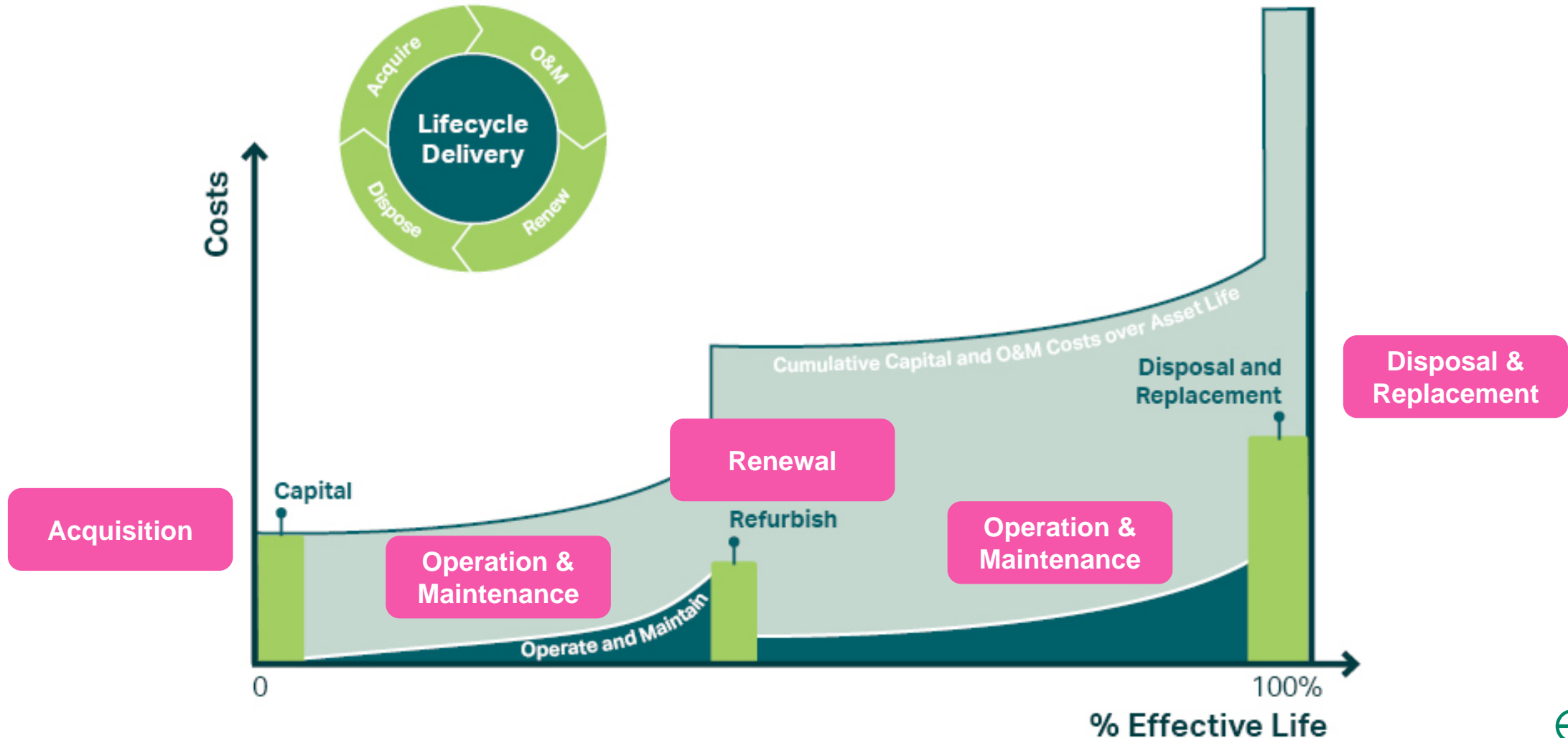


Example LoS Measures

Asset Class	Community Measures	Technical Measures
Facilities	Property proximities to public Libraries (map)	Percent of Facilities above target FCI
Parks	Property proximities to public Parks (map)	Hectares of maintained Parkland per 1,000 population
Active Transportation	Cycling and Trail Network (map)	Percent of priority Cycling, and Trail Network completed
Traffic Control & Streetlights	Streetlight Network (map)	Percent complete of LED Conversion Program
Fleet	Implementation of “Greening” the Fleet Strategy (including number of Electric and Hybrid vehicles in service)	Gas mileage of vehicles by class (light, medium, heavy)
Fire	Response area of fire halls (map)	Percent satisfaction based on results from biennial Citizen Satisfaction Survey

NOTE: The City has compiled data for all LoS measures, but the AM Plans favored an initial streamlined approach and do not yet have all the measures included

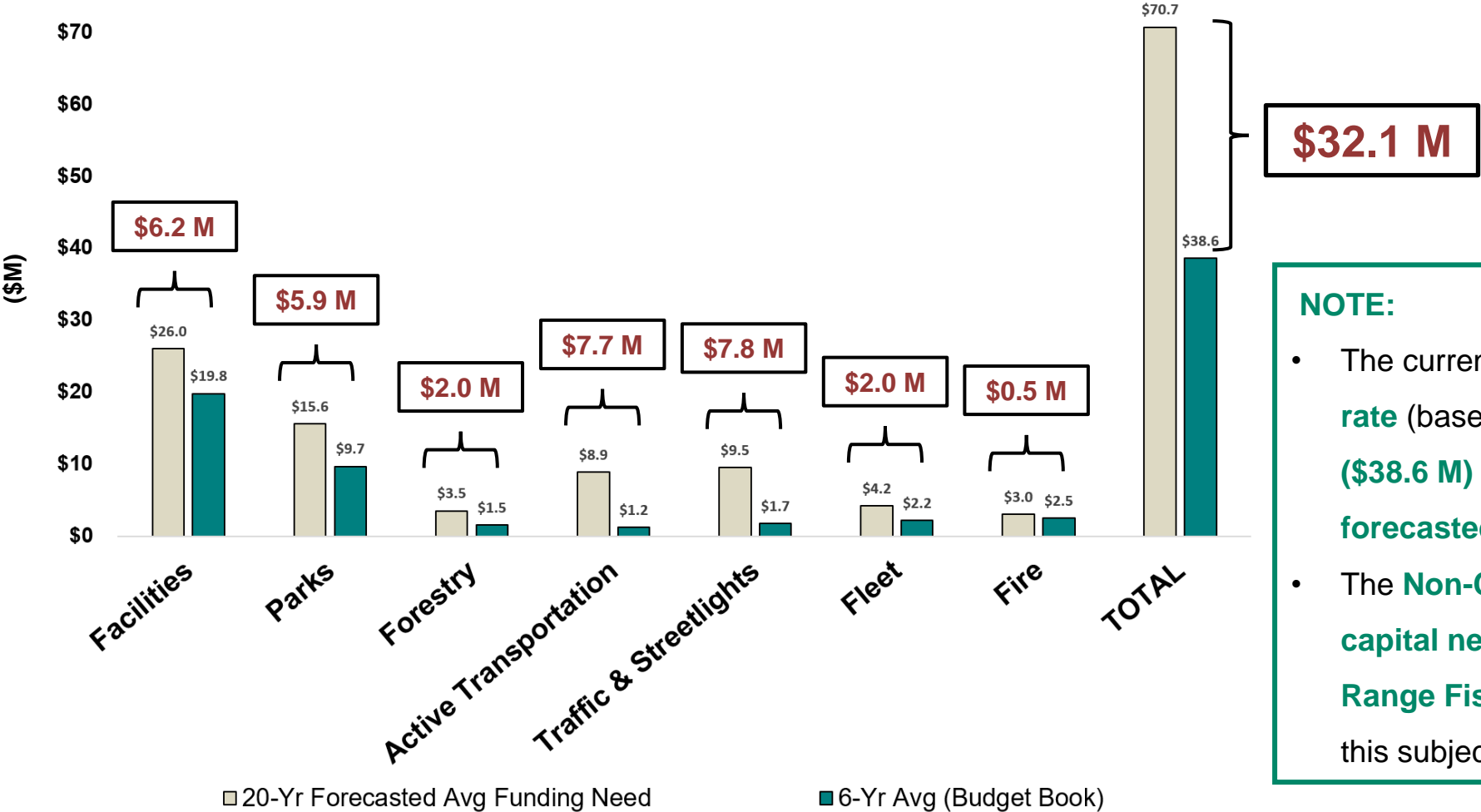
3. What are the Asset Lifecycle Strategies?



4. What are the Funding Needs? (1 of 2)



Non-Core Assets: Capital Asset Funding Needs



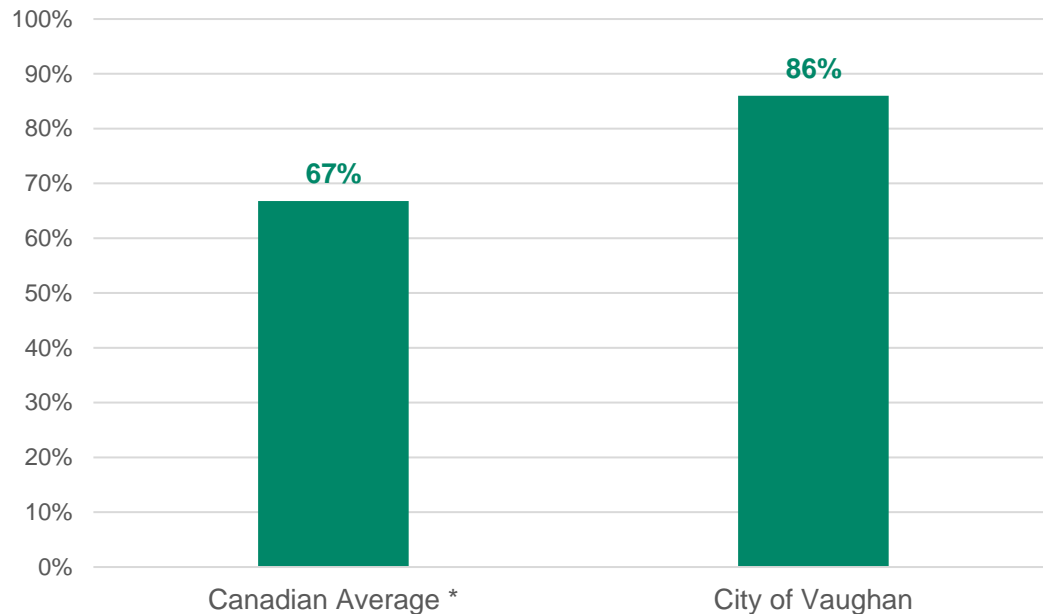
NOTE:

- The current **Non-Core asset capital investment rate** (based on Budget Book analysis) **is only 55%** (**\$38.6 M**) of their **average annual 20-year forecasted capital needs (\$70.7 M)**
- The **Non-Core annual 20-year forecasted capital needs** were direct inputs into the **Long-Range Fiscal Plan** (a presentation by Hemson on this subject will follow the AECOM presentation)

4. What are the Funding Needs? (2 of 2)



Percentage of Facility Assets in Good to Very Good Condition



* Source: 2019 Canadian Infrastructure Report Card, Culture and Recreation Facilities including Arenas and Pools, Arts and Culture and Other facilities. Excludes "Unknown"

NOTE:

- Indications are that the **City of Vaughan's Non-Core assets** are in a **better condition** than its **municipal peers**, considering the example of facility assets shown at left.
- However, these asset are continuously ageing and **increased capital funding** for **Non-Core assets** is required to:
 - Sustain the **high quality of service** that the City's customers are accustomed to.
 - **Manage risk** and avoid unexpected **asset failures**.
 - Ensure the **long-term sustainability** of the City's **\$1.34 B investment** in Non-Core assets.

5. How Can AM Planning Be Improved?



1. Continue to refine asset inventories and close current data gaps
2. Continue updating asset condition data to improve understanding of asset condition
3. Refine the LoS framework with the objective of meeting the O. Reg. 588 / 17 deadline of mid-2025:
 - Measure and report on asset performance
 - Link LoS with sustainable funding levels
4. Incorporate asset risk assessment identify high-risk assets
5. Establish a sustainable funding model for non-core assets
6. Continue improving the City's Non-Core AM program

AECOM Delivering a
better world