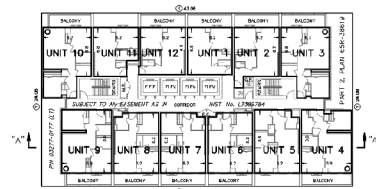
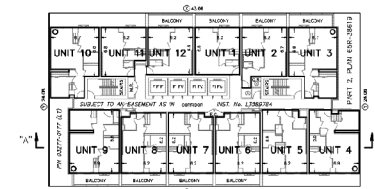


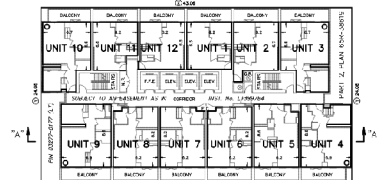
PLAN VIEW ILLUSTRATING  
RESIDENTIAL UNITS 1 TO 12, INCLUSIVE,  
ON LEVELS 9, 17, 23, 33 AND 41



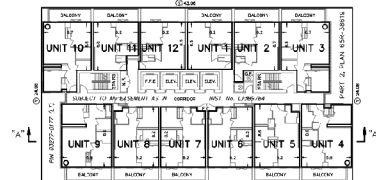
PLAN VIEW ILLUSTRATING  
RESIDENTIAL UNITS 1 TO 12, INCLUSIVE,  
ON LEVELS 13, 21, 29 AND 37



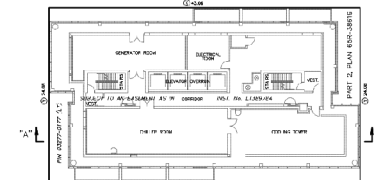
PLAN VIEW ILLUSTRATING  
RESIDENTIAL UNITS 1 TO 12, INCLUSIVE,  
ON LEVEL 45



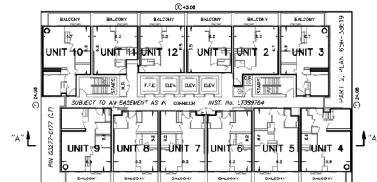
PLAN VIEW ILLUSTRATING  
RESIDENTIAL UNITS 1 TO 12, INCLUSIVE,  
ON LEVELS 10, 16, 26, 34 AND 42



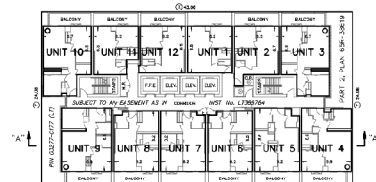
PLAN VIEW ILLUSTRATING  
RESIDENTIAL UNITS 1 TO 12, INCLUSIVE,  
ON LEVELS 14, 22, 30 AND 38



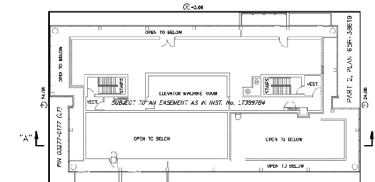
PLAN VIEW ILLUSTRATING  
MECHANICAL PENTHOUSES  
ON LEVEL 46  
(NO UNITS)



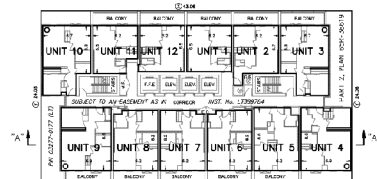
PLAN VIEW ILLUSTRATING  
RESIDENTIAL UNITS 1 TO 12, INCLUSIVE,  
ON LEVELS 11, 19, 27, 35 AND 43



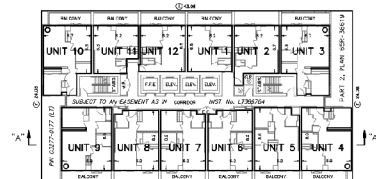
PLAN VIEW ILLUSTRATING  
RESIDENTIAL UNITS 1 TO 12, INCLUSIVE,  
ON LEVELS 15, 23, 31 AND 39



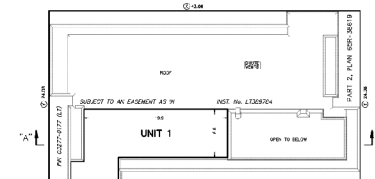
PLAN VIEW ILLUSTRATING  
MECHANICAL PENTHOUSES  
ON LEVEL 45, UPPER  
(NO UNITS)



PLAN VIEW ILLUSTRATING  
RESIDENTIAL UNITS 1 TO 12, INCLUSIVE,  
ON LEVELS 12, 20, 28, 36 AND 44



PLAN VIEW ILLUSTRATING  
RESIDENTIAL UNITS 1 TO 12, INCLUSIVE,  
ON LEVELS 16, 24, 32 AND 40



PLAN VIEW ILLUSTRATING  
COMMUNICATION UNIT 1,  
MECHANICAL PENTHOUSES  
ON LEVEL 46, ROOF

## Building B1 - Levels 9 to 46

**LOCATION:** Part of Lots 6 and 7, Concession 5; 7890  
Jane Street and 1000 Portage Parkway

**APPLICANT:** VMC East Block Residences., as a  
General Partner and on behalf of VMC East Block  
Residences Limited Partnership



## Attachment

**FILES:** 19CDM-21V001 and  
19CDM-21V002  
**RELATED FILE:** DA.18.074

**DATE:**  
April 12, 2022

8