

# **Block 18**

# **District Park**

## **(Peter Rupert Park)**

**Accessibility Advisory Committee Meeting**

**Parks Infrastructure Planning & Development**

**April 25, 2022**

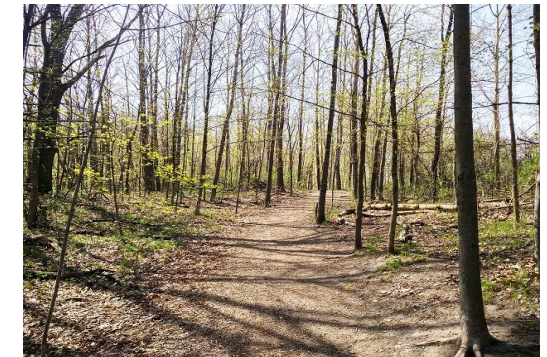




# Site Context Plan

The City of Vaughan is making progress on developing a new 7.7-hectare (19-acre) district park at the northwest corner of Peter Rupert Avenue and Rutherford Road. The proposed park will be dynamic, welcoming and inspiring, and it will feature a wide range of amenities for the entire community to enjoy.

The park rests within a study area of approximately 28.5 hectares (70 acres) of greenspace including parkland, open space trails, stormwater ponds, and the Cook Woodlot with connections to the Rutherford GO station. With places and spaces for kids to play, event staging for concerts, relaxing seating zones and so much more, people of all ages and abilities will be able to relax and enjoy this new outdoor amenity area.





# Park Master Plan



**PAVING LEGEND:**

- CONCRETE PAVING - STANDARD
- CONCRETE PAVING - INTEGRAL COLOUR / PATTERN A
- CONCRETE PAVING - INTEGRAL COLOUR / PATTERN B
- CONCRETE PAVING - INTEGRAL COLOUR / PATTERN C
- SPLASH PAD - CONCRETE PAVING
- ASPHALT PAVING - PEDESTRIAN
- ASPHALT PAVING - VEHICULAR
- RUBBERIZED PLAY SAFETY SURFACE
- LIMESTONE SCREENINGS PAVING
- COURT SURFACING

**PLANTING LEGEND:**

- EXISTING DECIDUOUS TREES
- PROPOSED DECIDUOUS TREES
- PROPOSED EVERGREEN TREES
- EXISTING PLANTING
- PROPOSED SHRUB / NATURALIZED / RESTORATION PLANTING AREAS
- AREA OF SOIL
- AREA OF SEED

**PARK FACILITIES AND ELEMENTS:**

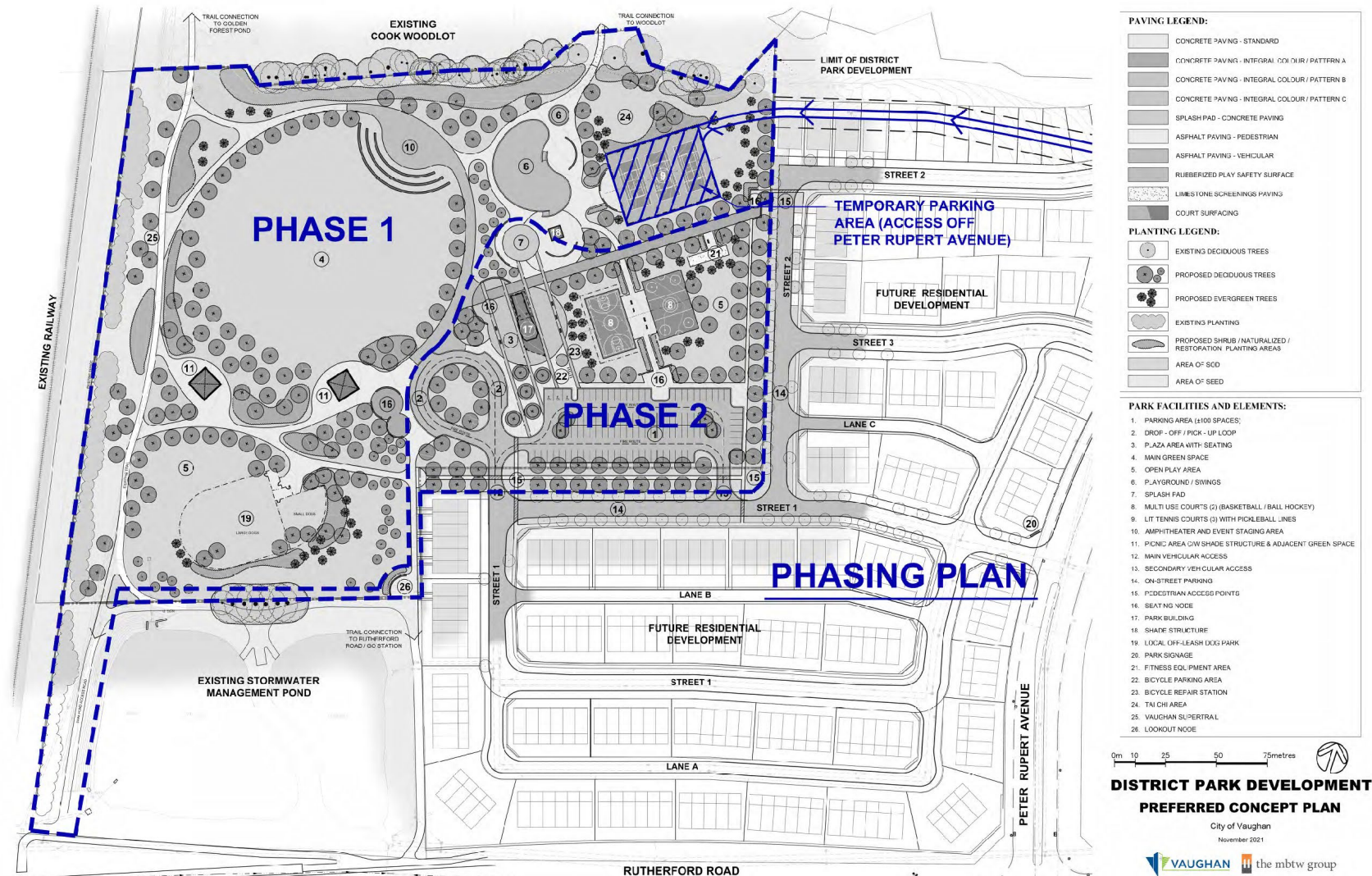
- PARKING AREA (±100 SPACES)
- DRIF - OFF / PICK - UP LOOP
- PLAZA AREA WITH SEATING
- MAIN GREEN SPACE
- OPEN PLAY AREA
- PLAYGROUND / SWINGS
- SPLASH PAD
- MULTI USE COURTS (2) (BASKETBALL / BALL HOCKEY)
- LIT TENNIS COURTS (3) WITH PICKLEBALL LINES
- AMPHITHEATER AND EVENT STAGING AREA
- PICNIC AREA C/W SHADE STRUCTURE & ADJACENT GREEN SPACE
- MAIN VEHICULAR ACCESS
- SECONDARY VEHICULAR ACCESS
- ON-STREET PARKING
- PEDESTRIAN ACCESS POINTS
- SEATING / BENCH
- PARK BUILDING
- SHADE STRUCTURE
- LOCAL OFF-LEASH DOG PARK
- PARK SIGNAGE
- FITNESS EQUIPMENT AREA
- BICYCLE PARKING AREA
- BICYCLE REPAIR STATION
- TAI CHI AREA
- VAUGHAN SUPERTRAIL
- LOOKOUT NODE



# Phasing Plan

Phasing of the new district park is necessary due to servicing required for the splash pad and washroom building which will be provided from the adjacent future development. These future services will not prevent the City from proceeding with the construction of Phase 1 of the park with key facilities and amenities for the local community to start enjoying in the next few years.

Phase 1 of the park will include a district level playground facility, asphalt pathways, trail connections to the Cooks Woodlot, an open air amphitheater and gathering space, picnic shelters, and local off-leash dog area.





# Universal Playground - Phase 1





# Universal Design - Phase 1



# Universal Design – Phase 2

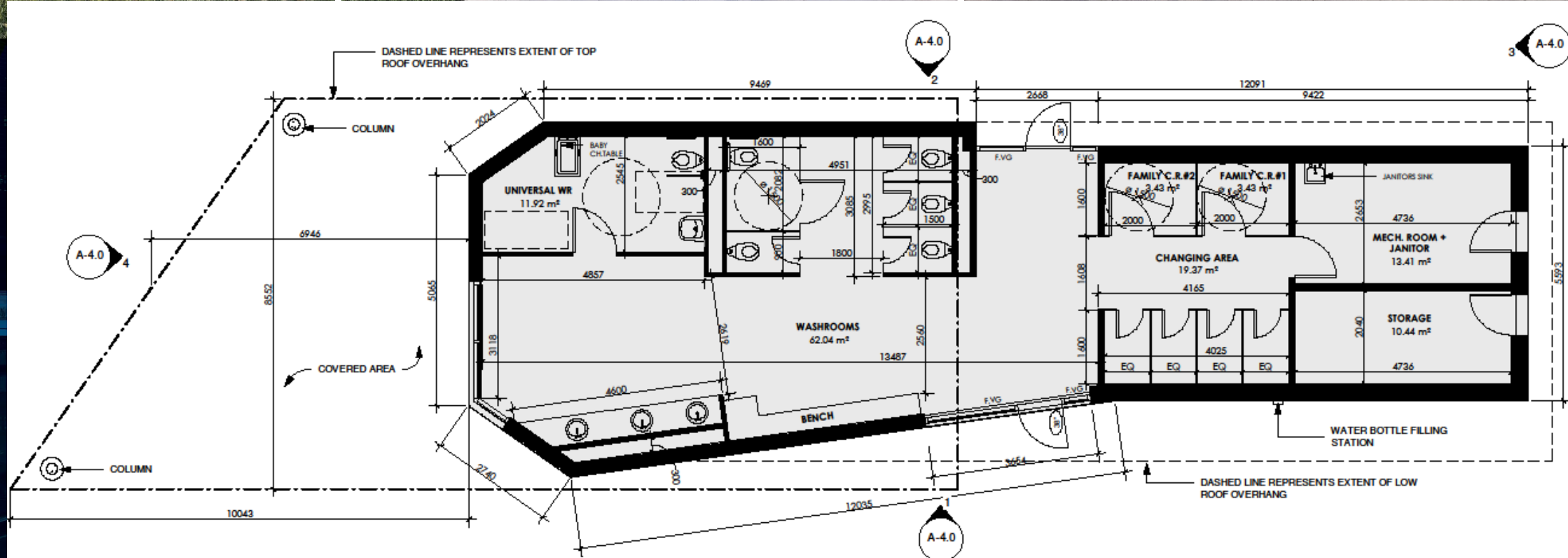




# Universal Design – Phase 2



# Washroom Building - Phase 2





# Next Steps

Preliminary construction timeline:

Tender in Q3 2022

Construction in Q4 2022

Link to project website:

<https://www.vaughan.ca/projects/community/PeterRupertPark/Pages/default.aspx>

Project Inquires:

[accessvaughan@vaughan.ca](mailto:accessvaughan@vaughan.ca)



# Q&A

---



# Thank You.

