

Context Location Map

LOCATION:
Part of Lot 30, Concession 8

APPLICANT:
Kirby 27 Developments Limited

N:\GIS_Archive\Attachments\OP\op.17.007.dwg

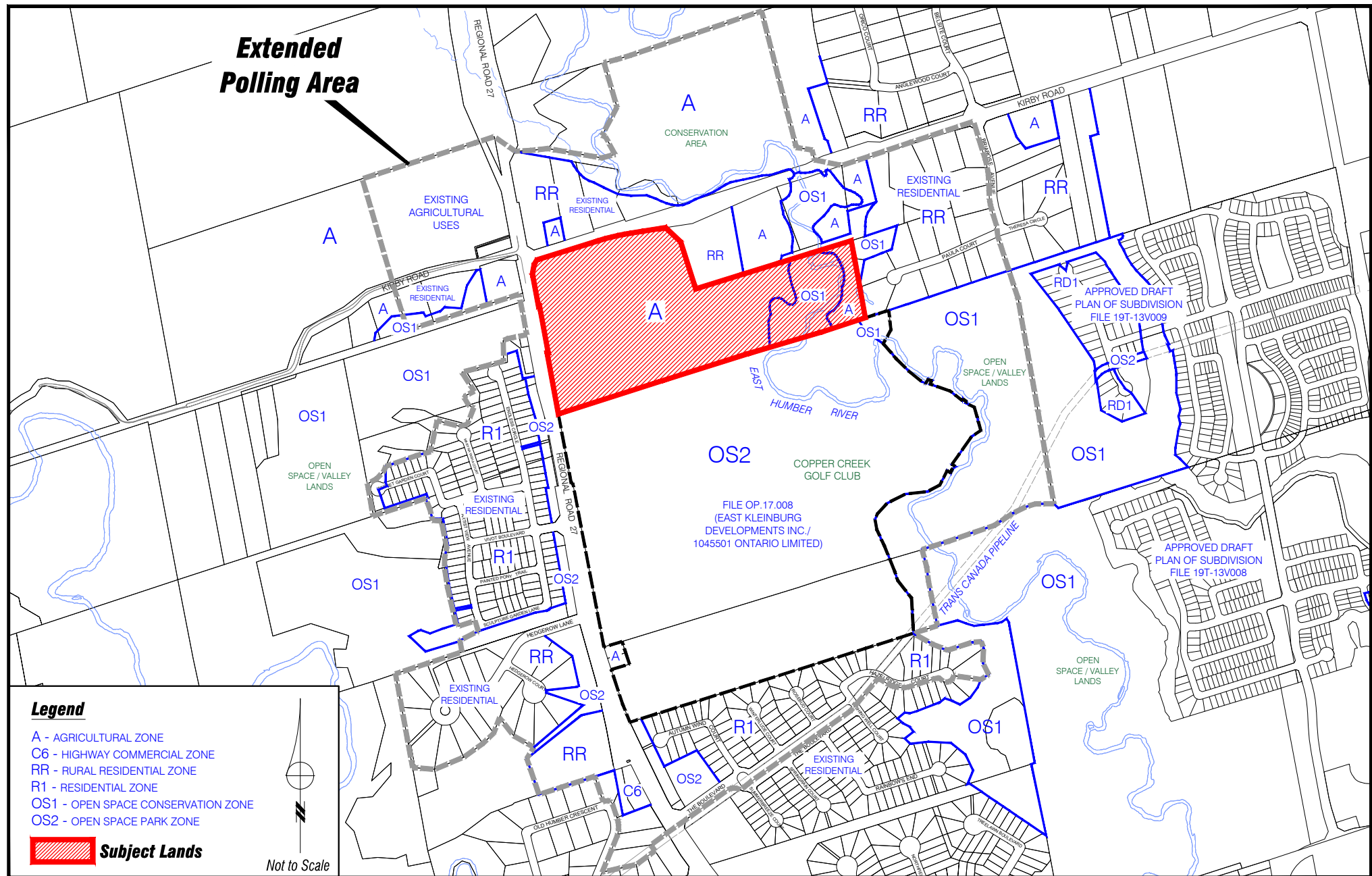


Attachment

FILE:
OP.17.007

DATE:
February 5, 2019

1



Location Map

LOCATION:
Part of Lot 30, Concession 8

APPLICANT:
Kirby 27 Developments Limited

N:\GIS_Archive\Attachments\OP\op.17.007.dwg



Attachment

FILE:
OP.17.007

DATE:
February 5, 2019

2



Proposed Land Use - File: OP.17.007

LOCATION:
Part of Lot 30, Concession 8

APPLICANT:
Kirby 27 Developments Limited

N:\GIS_Archive\Attachments\OP\op.17.007.dwg

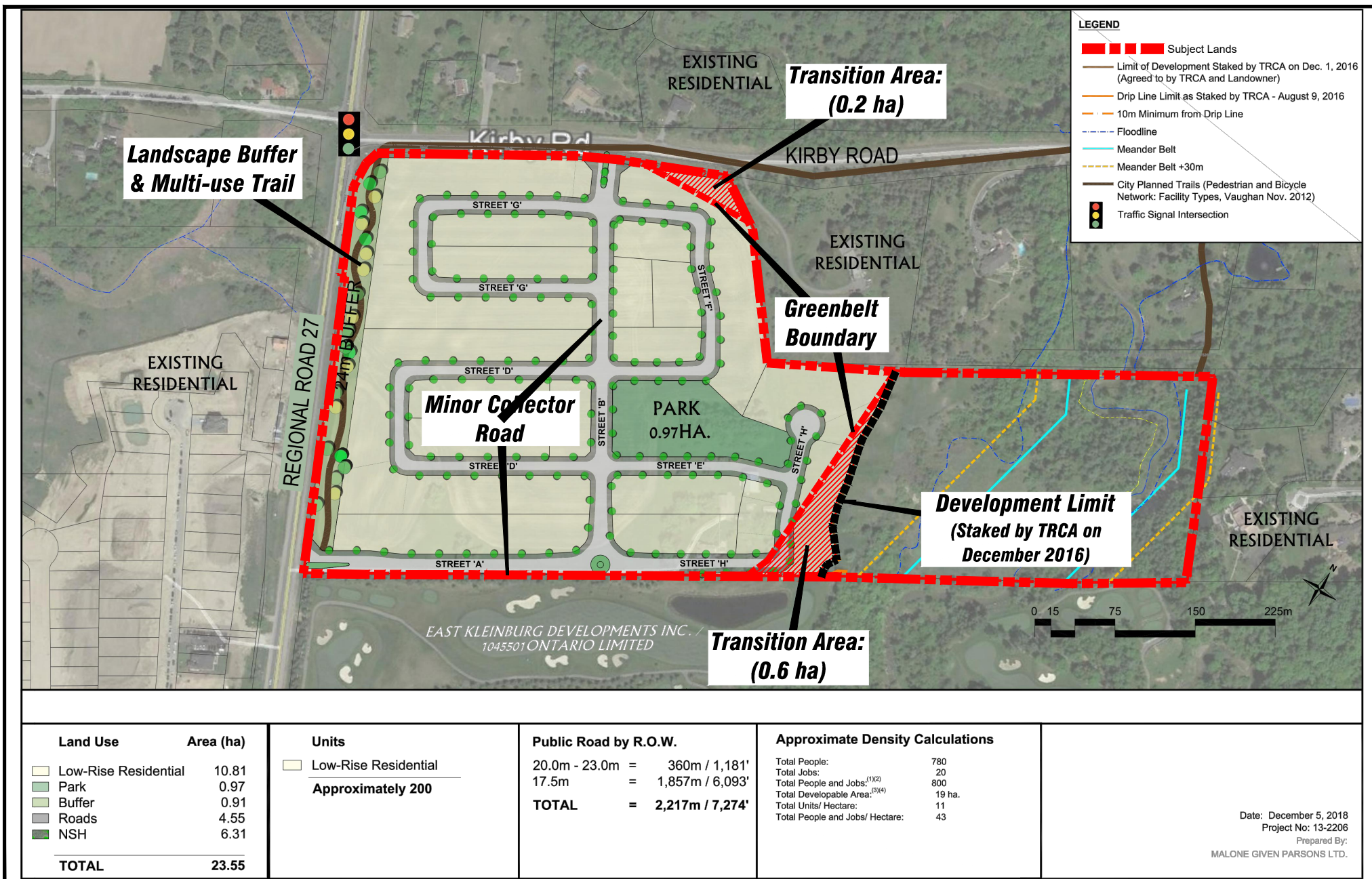


Attachment

FILE:
OP.17.007

DATE:
February 5, 2019

3



Concept Plan

LOCATION:
Part of Lot 30, Concession 8

APPLICANT:
Kirby 27 Developments Limited

N:\GIS_Archive\Attachments\OP\op.17.007.dwg

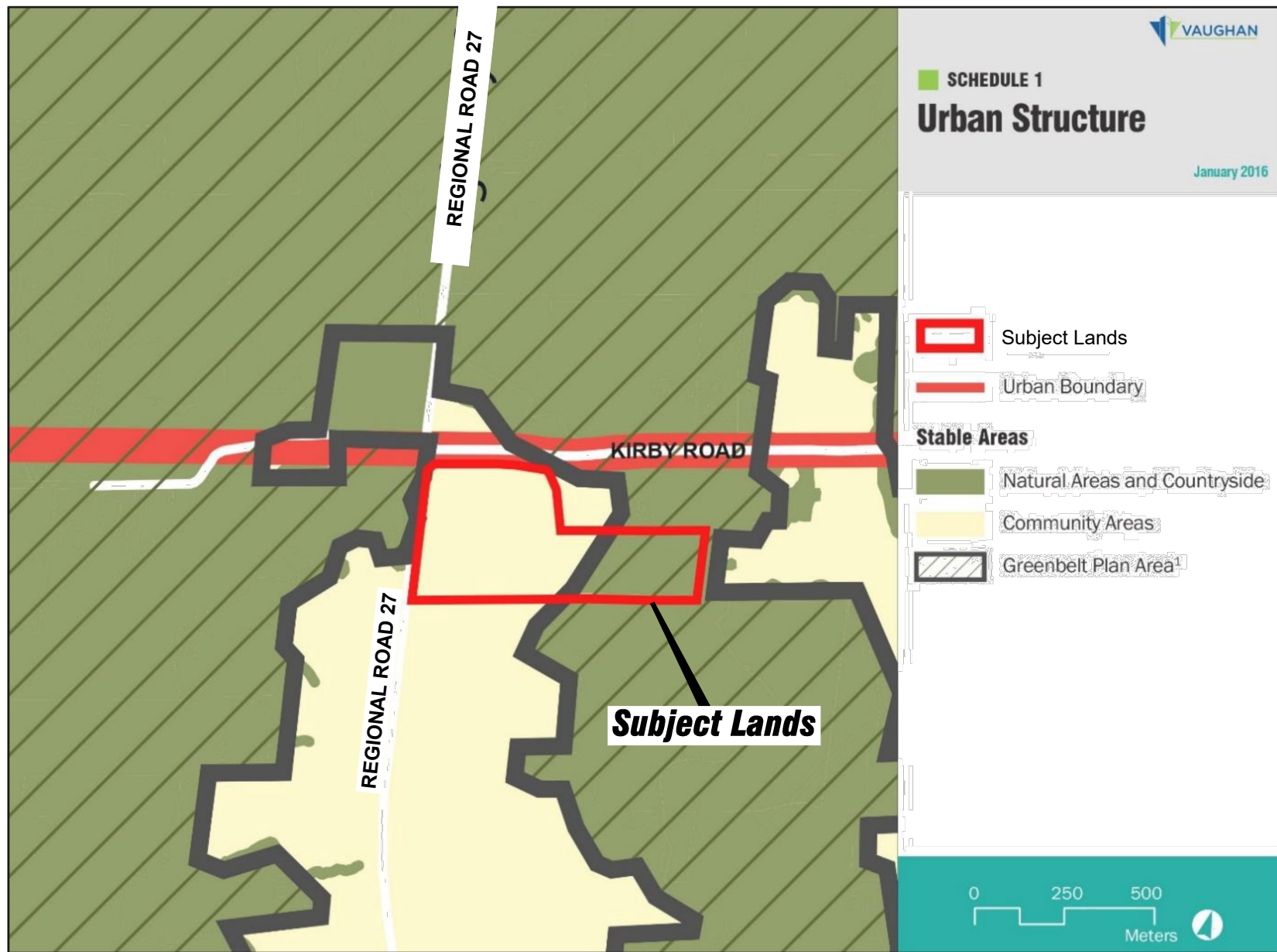


Attachment

FILE:
OP.17.007

DATE:
February 5, 2019

4



VOP 2010 Schedule 1 - Urban Structure

APPLICANT: Kirby 27 Developments Limited
LOCATION: Part of Lot 30, Concession 8

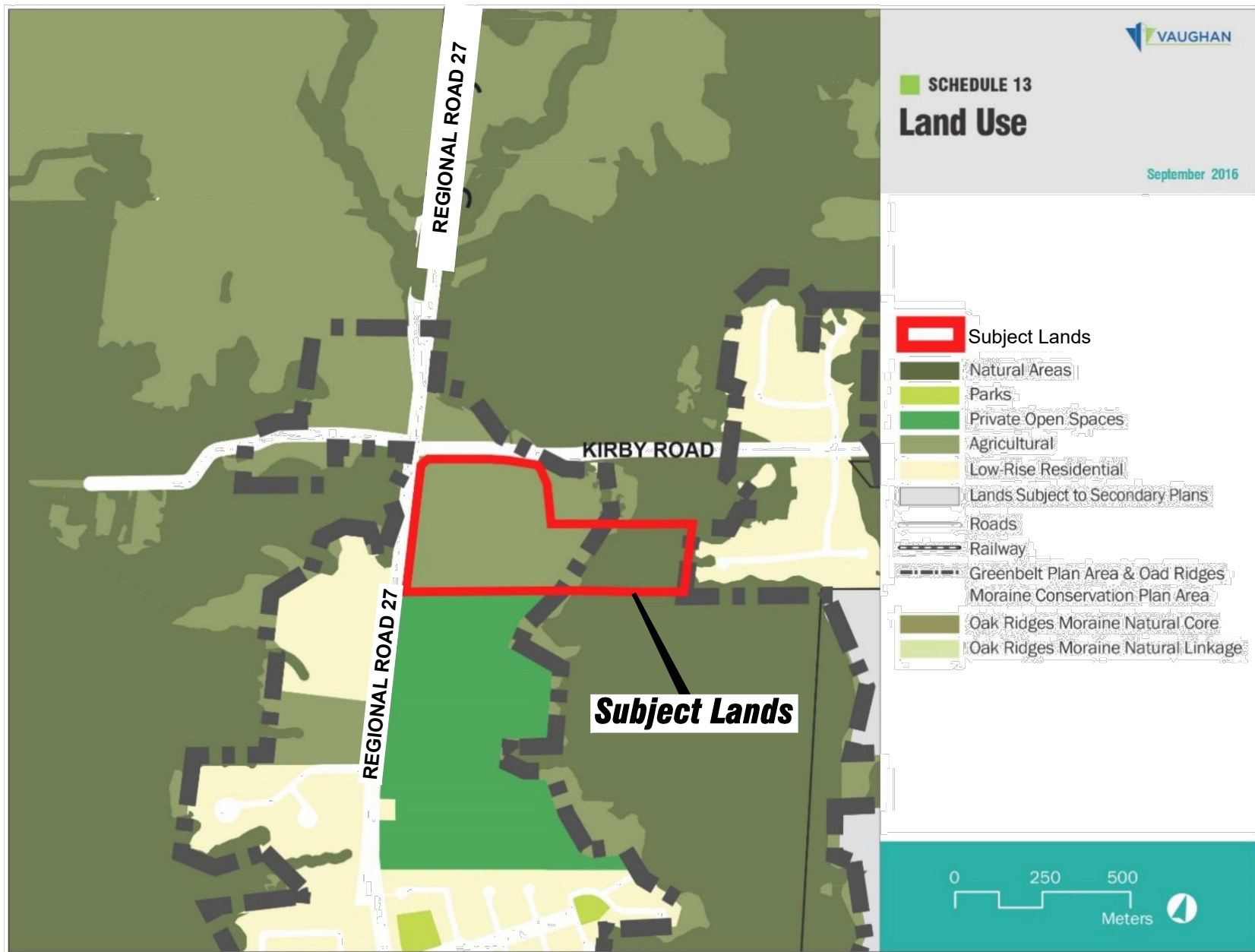


Attachment

FILE:
OP.17.007

DATE:
February 5, 2019

5



VOP 2010 Schedule 13 - Land Use

APPLICANT: Kirby 27 Developments Limited
LOCATION: Part of Lot 30, Concession 8

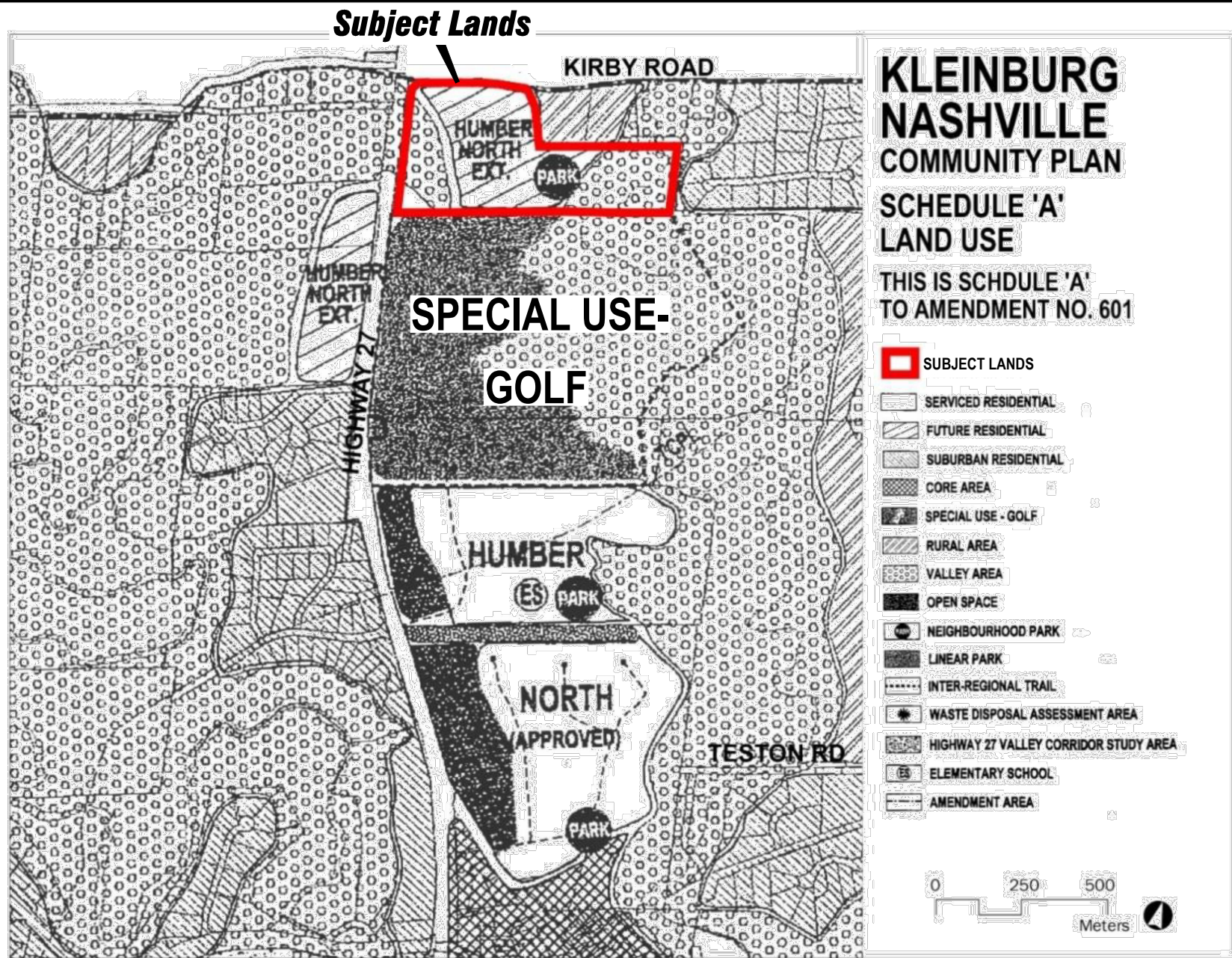


Attachment

FILE:
OP.17.007

DATE:
February 5, 2019

6



OPA 601 (Kleinburg Nashville Community Plan - Schedule 'A' Land Use

APPLICANT: Kirby 27 Developments Limited
LOCATION: Part of Lot 30, Concession 8



Attachment

FILE:
OP.17.007

DATE:
February 5, 2019

7