

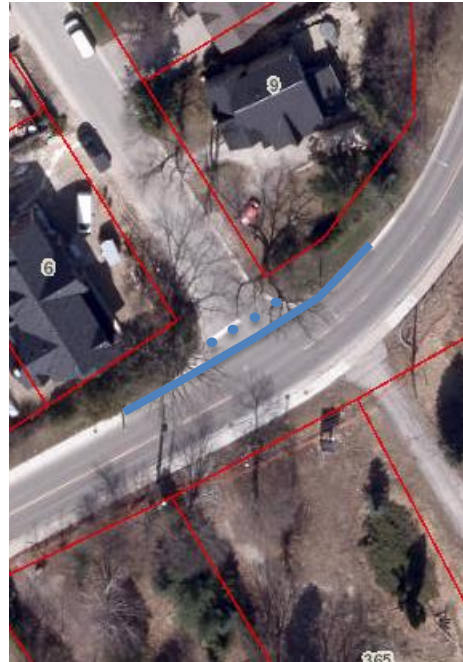
Attachment No. 4

Full Closure Options

Napier Street at Stegman's Mill Road Intersection:



Option #1A:
Feasibility is impacted by spatial and land constraints.
Similar impacts with Hamper head configuration



Option #1B:
Impact emergency services, waste collection, and snow plowing due to closure and lack of turnaround space.



Option #1C:
Impacts emergency services, waste collection, and snow plowing.
Logistics of operations (e.g. gate access for multiple service providers)

Full Closure Options

	Advantages	Disadvantages
Option #1A Cul-de-Sac	Mitigates the safety issue of poor sight distances Reduces potential traffic infiltration	Not feasible for implementation due to spatial requirements. Restrict access to residents and non-residents alike Not feasible from an operational perspective
Option #1B Dead-End	Mitigates the safety issue of poor sight distances	Waste collection vehicles and snow-plows would have to reverse a 120 metre section. Not feasible from an operational perspective. Creates another safety issue.
	Reduces potential traffic infiltration	Restrict access to residents and non-residents alike
Option #1C Gated Emergency Access Only	Mitigates the safety issue of poor sight distances	Restrict access to residents and non-residents alike
	Reduces potential traffic infiltration	Logistics of operations (i.e., gate access for multiple service providers)
	Retains access for emergency and service vehicles	