

ACCESSIBILITY ADVISORY COMMITTEE – FEBRUARY 23, 2021

COMMUNICATIONS

Distributed February 23, 2021

Item

- | | | |
|-----|---|---|
| C1. | Presentation material titled: “Carrville Community Centre, Library and District Park” | 1 |
|-----|---|---|

Disclaimer Respecting External Communications

Communications are posted on the City’s website pursuant to Procedure By-law Number 7-2011. The City of Vaughan is not responsible for the validity or accuracy of any facts and/or opinions contained in external Communications listed on printed agendas and/or agendas posted on the City’s website.

Please note there may be further Communications.

City of Vaughan

Communication : C1
Accessibility Advisory Committee
February 23, 2021
Item # 1

Carrville Community Centre, Library, and District Park

Accessibility Advisory Committee Meeting
February 23, 2021



AGENDA

- **Introduction of the Project**
- **Work Done to Date**
- **Context and Program**
- **Project Goals**
- **Current Design (Park and Building)**
- **Next Steps**

Work done to date

Tours: Learning from Others

Design Team, City of Vaughan / Vaughan Public Libraries toured 6 facilities prior to starting design including:

Aaniin Community Centre and Library – Markham

Oak Ridges Community Centre – Richmond Hill

York Recreation Centre – Toronto

Meadowvale Community Centre and Library –
Mississauga

North Thornhill Community Centre,

Pleasant Ridge Library – Vaughan

Vellore Village Community Centre,

Vellore Village Library – Vaughan



Context and Program

Topography and Natural Edges

Existing site offers many great opportunities

- Easily accessed by many modes of travel
- Range of experiences
- Adjacent to a protected ravine environment
- Will act as catalyst for development
- Slope affords potential for outlook and exciting park uses



Context and Program

Building Program

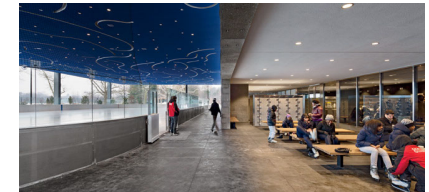
Library
Aquatics and Change Rooms
Fitness
Gym
Track
Multi-purpose
Support and Admin.
Partner Spaces

The program includes a range of spaces that will serve many activities.

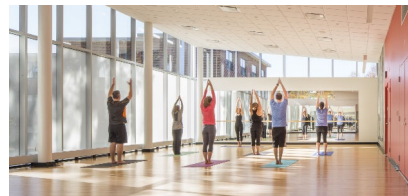
Spaces will be designed to be inclusive, accessible, and comfortable.



multi-use rooms



park support



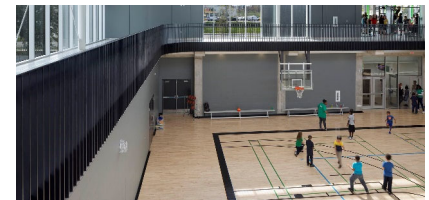
fitness



library



common areas



gym + track



aquatics centre



partner spaces

Context and Program

District Park Program

Open Space
Tennis Courts
Basketball Court
Playground
Water Play
Skate Trail
Active zone
Library Terrace
Childcare outdoor play
Trails/flex/shade/seating
Fitness and Activity Area
Exterior Ice and Park Change Rooms

The park program includes family, active and passive zones.
There will be access to change rooms and washrooms.



tennis courts



ice skating trail



open parkland



basketball



water play



playground

Project Goals

Six measures of success

WELCOMING TO ALL: inclusive of all abilities, generations, genders and cultures

STRONG PLACEMAKING: common spaces that support community activities

A VIBRANT PARK: a range of park experiences

HIGHER SUSTAINABILITY: strive for a better relationship with the environment

BEST VALUE: provide an enduring civic investment

A HEALTHY COMMUNITY: support pursuit of wellbeing in a post Covid 19 world

Current Design

Built Context Analysis

Naturalized east from north-east to south-east

adjacent institutions: school and church



Site Access Analysis

Primary pedestrian access from south and west

vehicle access exclusively from south and west

Current Design

Movement

Building as gateway into the park

Central promenade showcases interior and exterior program

Good connectivity onto site

Multiple parking lots providing proximity and accessibility to building and site

Moments of nature intermingled with park program



Current Design

Public Passage

Central public boulevard showcasing interior and exterior programs, connecting the building with the park



Current District Park Design

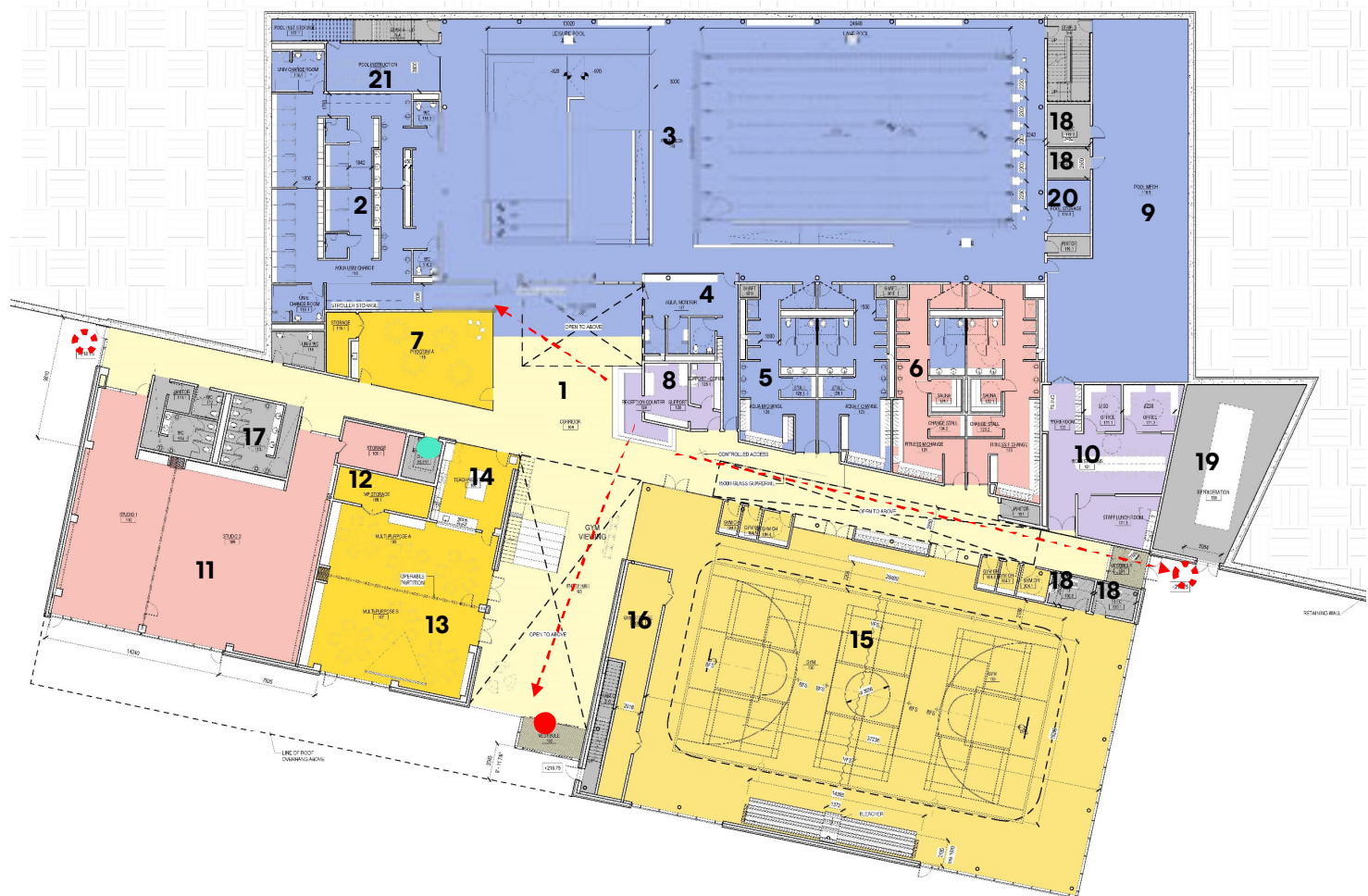


Current Building Design

Level 1

N
↑

1. Lobby
2. Universal Change Room
3. Pool
4. Aquatic Monitor, Staff Room
5. Aquatic Change Room
6. Fitness Change Room
7. Program Room A
8. Control Desk
9. Pool Mech
10. Admin
11. Fitness Studio
12. Multipurpose Storage
13. Multipurpose Room
14. Teaching Kitchen
15. Gym
16. Gym Storage
17. WC
18. Elec/IT
19. Refrigeration
20. Pool Storage
21. Pool Instruction Room



Current Building Design

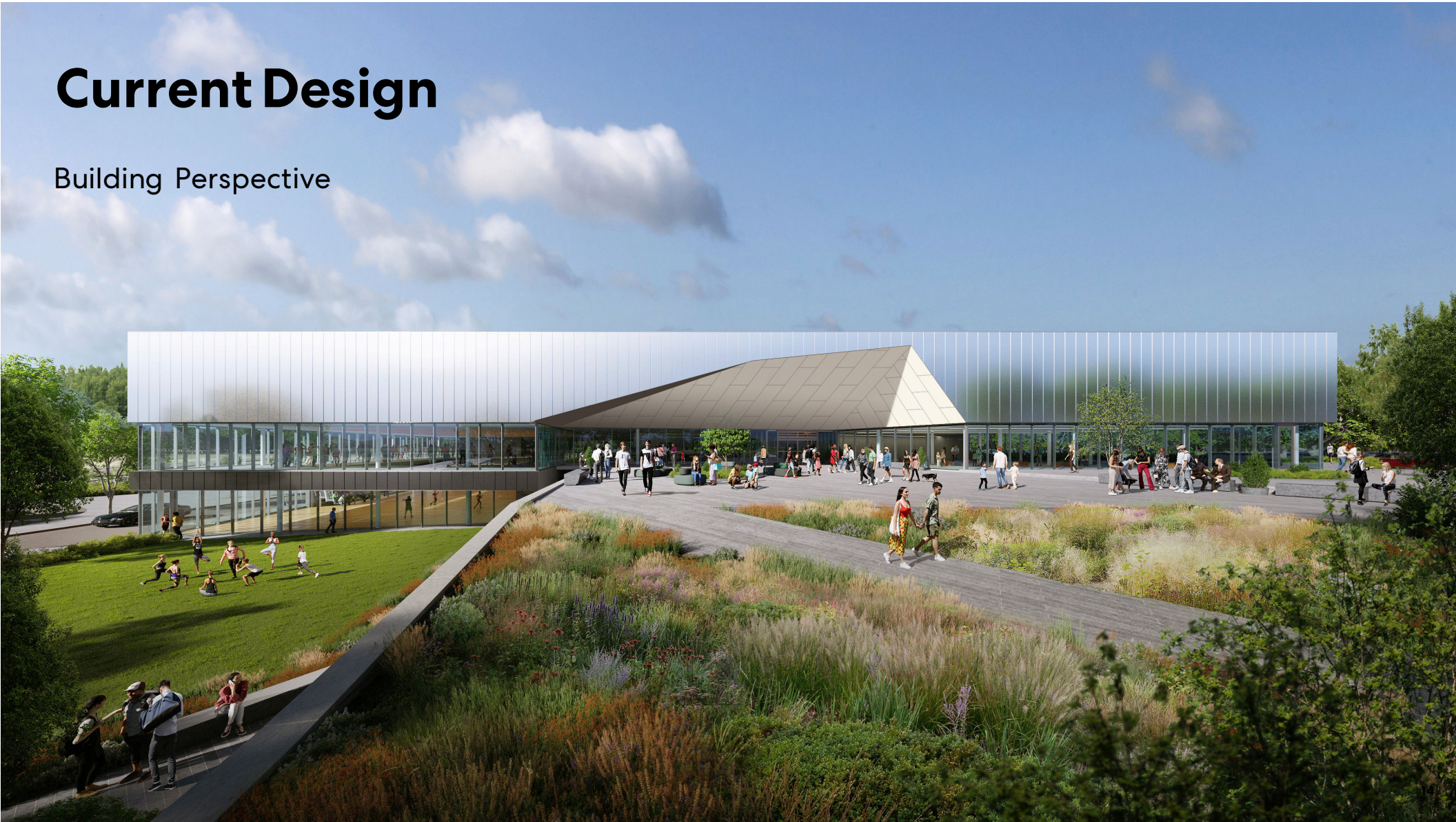
Level 2



- 1. Lobby
- 2. Rental
- 3. Childcare
- 4. Meeting
- 5. Program Room B
- 6. Community Hub
- 7. Running Track
- 8. Library
- 9. Terrace
- 10. WC
- 11. Elec/IT
- 12. Recycling/General Storage

Current Design

Building Perspective



Current Design

Main Entry Perspective (Level 2)



Current Design

South Entry Perspective (Level 1)



Current Design

Gymnasium Perspective (Level 1)



Current Design

Library Perspective (Level 1)



Next Steps

**Accessibility Advisory
Committee Meeting**
February 23, 2021

**Rick Hansen Foundation
Accessibility Certification
Design Review**
On-going (Currently 84%)



THANK YOU